



Vertical discharge roof fan model DVS, manufactory ST-Fans.

The impeller is equipped with 3D-profiled backward curved blades and is directly driven by a speed-adjustable outer pole motor.

These roof fans have a high efficiency, excellent noise level and are maintenance-free and reliable. The maximum temperature of the air to be moved is, depending on the type, between 40 ° C and 70 ° C. The base plate is made of galvanized sheet steel.

The rain cover is completely made of seawater resistant aluminum AlMg 3. Sealing tape and mounting material are supplied as standard.

General data:

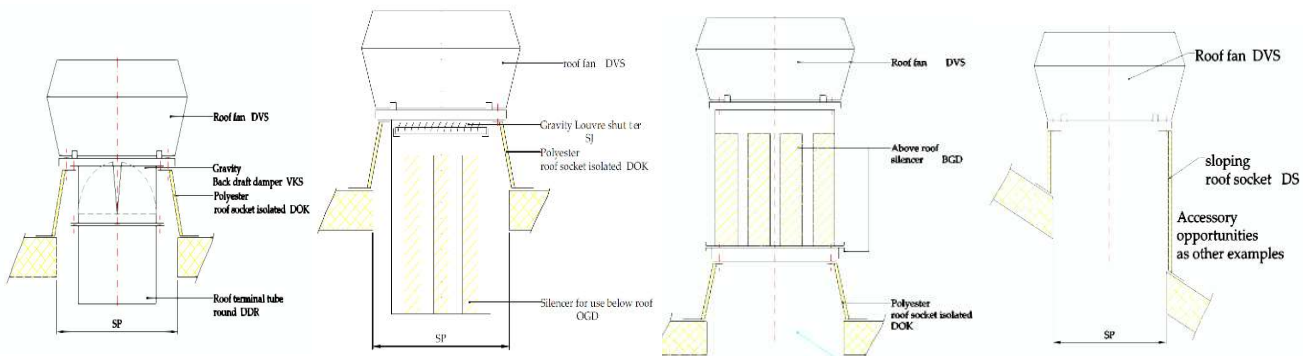
Max Air flow	17.993	m3/h
Impeller speed	1.274	rpm
Input power	4,025	kW
Voltage (nominal)	3x400/50	V/Hz
Input current	6,48	A
Enclosure class, motor	54	IP
Weight	112,0	kg
Sound pressure level $\pm 2^*$	72	dB(A)

** (at 4 m near the fan with inlet and outlet ducted, in free field)*

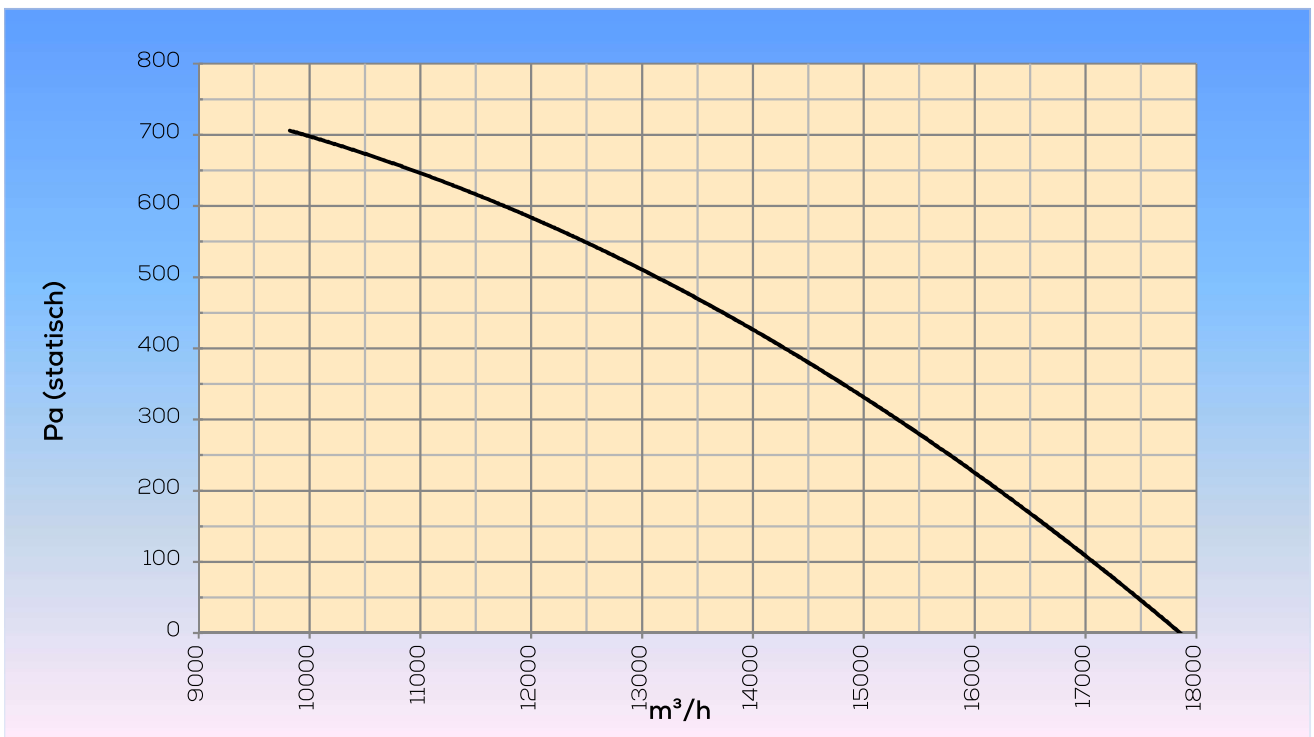
Options:

Dakopstand vlak dak	DOK 710
Silencer for use below roof	OGD 710
Silencer for use above roof	BGD 710
Gravity Louvre shutter	SJ 710
Roof duct	DDR 710
Gravity Back draft damper	VKS 710
Dakopstand schuindak	DS 710
Dakopstand schuindak/loodslabbe	DSL 710
Speed control	STRS4-80L40

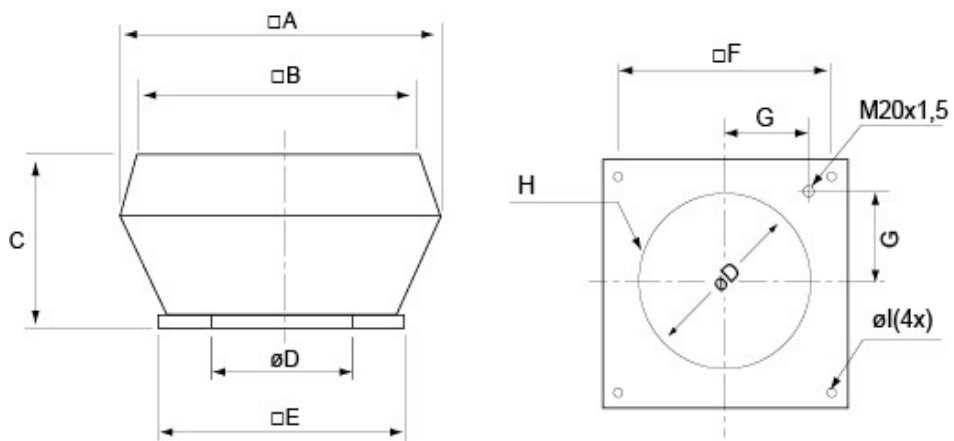
Assembly examples:



Curve:



Dimensions:



□A	□B	C	∅D	□E	□F	G	H	∅I
1350	1185	660	647	1035	840	320	8xM8	14(4x)