



Vertical discharge roof fan model DVS, manufactory ST-Fans.

The impeller is equipped with 3D-profiled backward curved blades and is directly driven by a speed-adjustable outer pole motor.

These roof fans have a high efficiency, excellent noise level and are maintenance-free and reliable. The maximum temperature of the air to be moved is, depending on the type, between 40 ° C and 70 ° C. The base plate is made of galvanized sheet steel.

The rain cover is completely made of seawater resistant aluminum AlMg 3. Sealing tape and mounting material are supplied as standard.

General data:

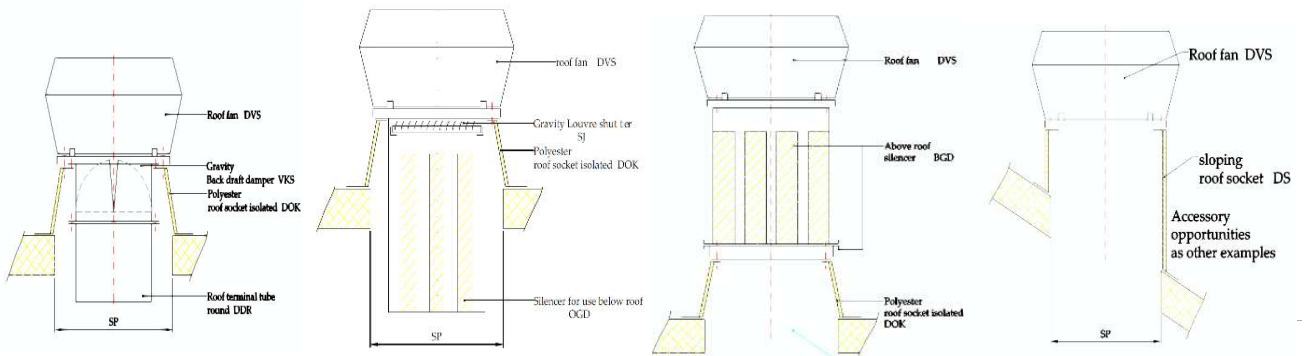
Max Air flow	9.202	m3/h
Impeller speed	920	rpm
Input power	0,837	kW
Voltage (nominal)	3x400/50	V/Hz
Input current	2,15	A
Enclosure class, motor	54	IP
Weight	68,0	kg
Sound pressure level $\pm 2^*$	44	dB(A)

** (at 4 m near the fan with inlet and outlet ducted, in free field)*

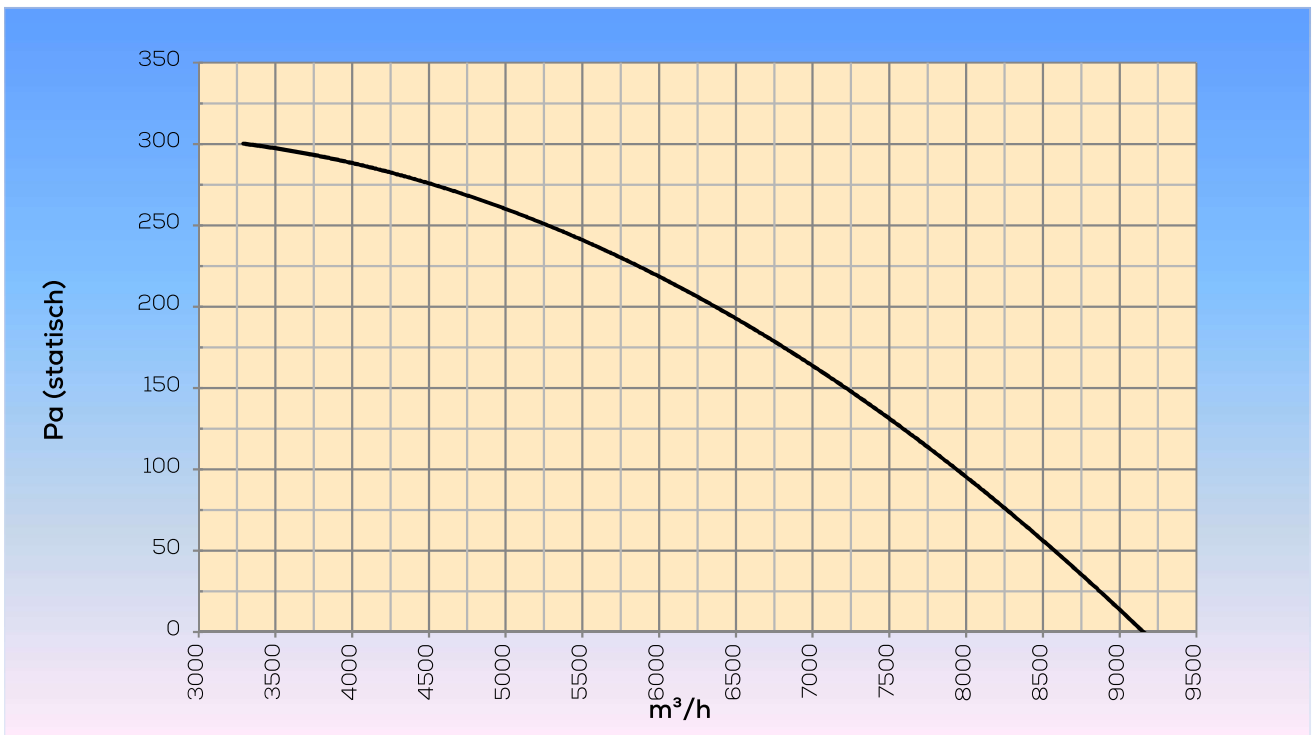
Options:

Dakopstand vlak dak	DOK 560/630
Silencer for use below roof	OGD 560/630
Silencer for use above roof	BGD 560/630
Gravity Louvre shutter	SJ 560/630
Roof duct	DDR 560/630
Gravity Back draft damper	VKS 560/630
Dakopstand schuindak	DS 560/630
Dakopstand schuindak/loodslabbe	DSL 560/630
Speed control	STRS4-25L40

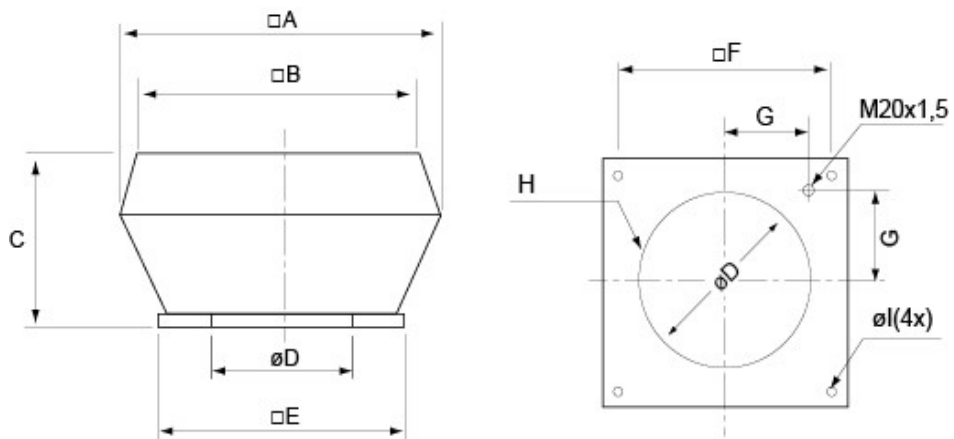
Assembly examples:



Curve:



Dimensions:



□A	□B	C	∅D	□E	□F	G	H	∅l
1150	960	560	605	939	750	293	8xM8	14(4x)