



Vertical discharge roof fan model DVS, manufactory ST-Fans.

The impeller is equipped with 3D-profiled backward curved blades and is directly driven by a speed-adjustable outer pole motor.

These roof fans have a high efficiency, excellent noise level and are maintenance-free and reliable. The maximum temperature of the air to be moved is, depending on the type, between 40 ° C and 70 ° C. The base plate is made of galvanized sheet steel.

The rain cover is completely made of seawater resistant aluminum AlMg 3. Sealing tape and mounting material are supplied as standard.

## General data:

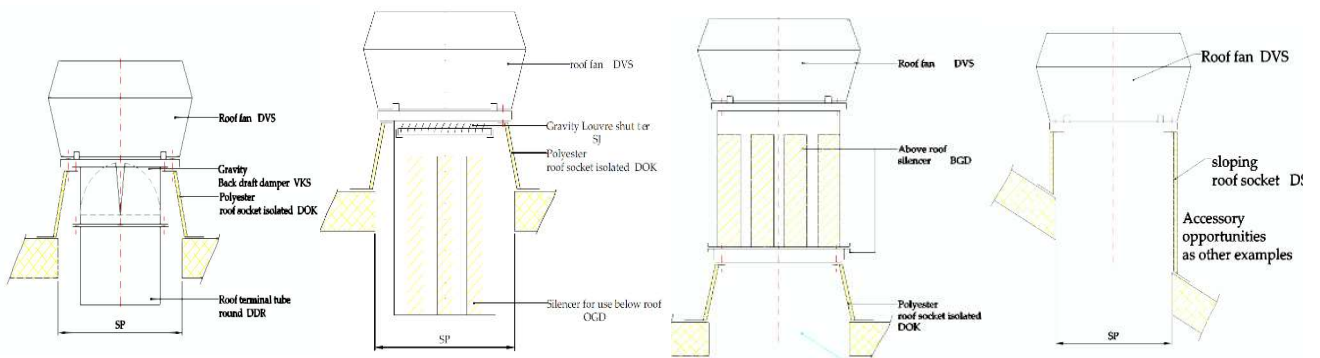
Max Air flow	13.237	m3/h
Impeller speed	1.326	rpm
Input power	2,547	kW
Voltage (nominal)	3x400/50	V/Hz
Input current	4,5	A
Enclosure class, motor	54	IP
Weight	73,5	kg
Sound pressure level $\pm 2^*$	63	dB(A)

*\* (at 4 m near the fan with inlet and outlet ducted, in free field)*

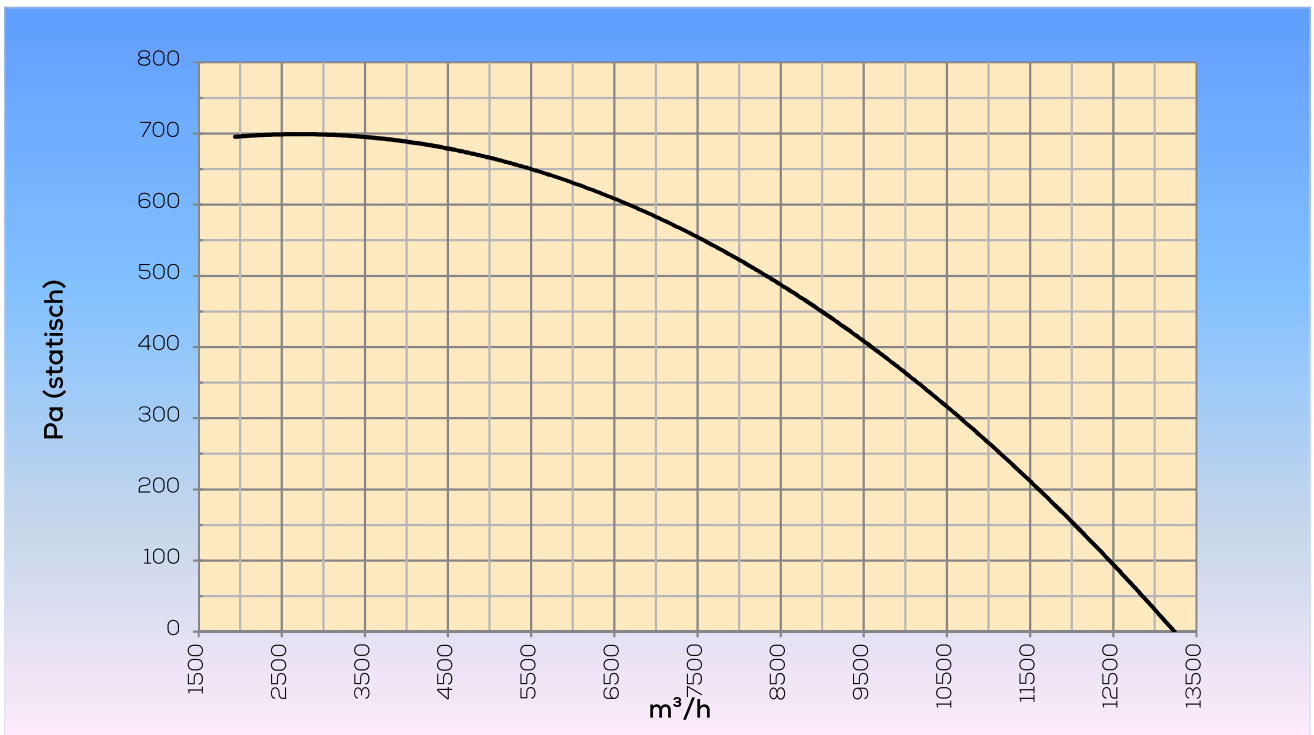
## Options:

Dakopstand vlak dak	DOK 560/630
Silencer for use below roof	OGD 560/630
Silencer for use above roof	BGD 560/630
Gravity Louvre shutter	SJ 560/630
Roof duct	DDR 560/630
Gravity Back draft damper	VKS 560/630
Dakopstand schuindak	DS 560/630
Dakopstand schuindak/loodslabbe	DSL 560/630
Speed control	STRS4-60L40

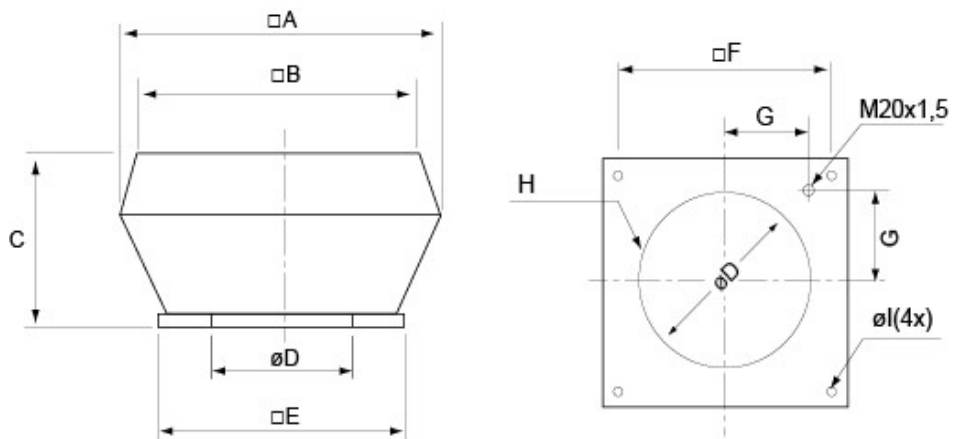
Assembly examples:



Curve:



Dimensions:



□A	□B	C	∅D	□E	□F	G	H	∅l
1150	960	560	605	939	750	293	8xM8	14(4x)