



Vertical discharge roof fan model DVS, manufactory ST-Fans.

The impeller is equipped with 3D-profiled backward curved blades and is directly driven by a speed-adjustable outer pole motor.

These roof fans have a high efficiency, excellent noise level and are maintenance-free and reliable. The maximum temperature of the air to be moved is, depending on the type, between 40 ° C and 70 ° C. The base plate is made of galvanized sheet steel.

The rain cover is completely made of seawater resistant aluminum AlMg 3. Sealing tape and mounting material are supplied as standard.

General data:

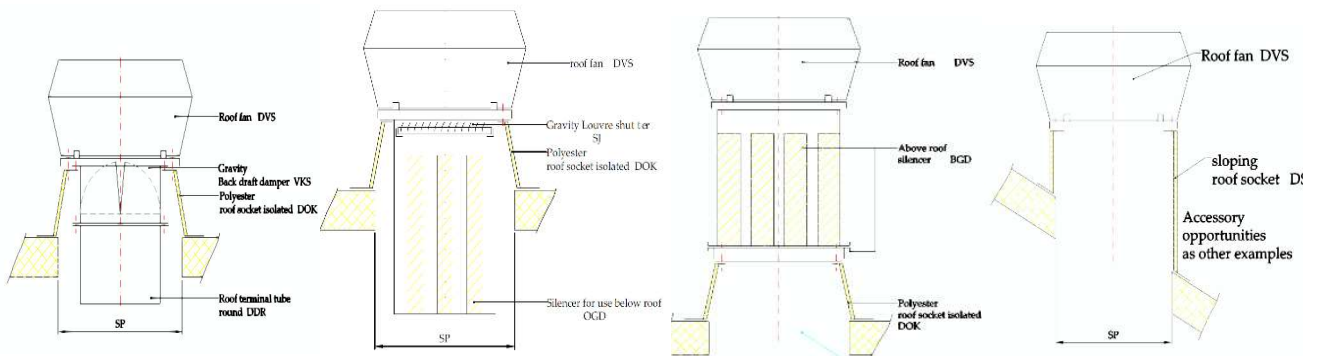
Max Air flow	8.050	m3/h
Impeller speed	1.374	rpm
Input power	1,661	kW
Voltage (nominal)	3x400/50	V/Hz
Input current	2,85	A
Enclosure class, motor	54	IP
Weight	48,0	kg
Sound pressure level ±2*	65	dB(A)

** (at 4 m near the fan with inlet and outlet ducted, in free field)*

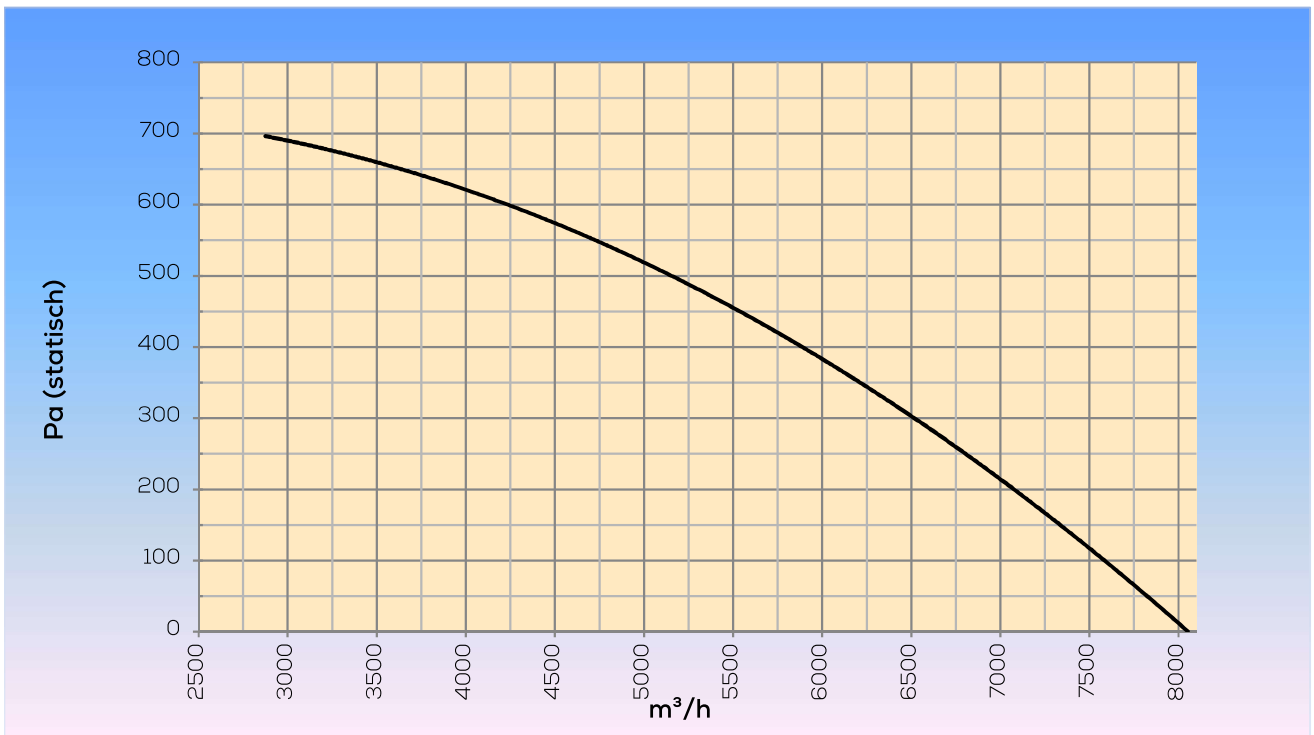
Options:

Dakopstand vlak dak	DOK 450/499/500
Silencer for use below roof	OGD 450/500
Silencer for use above roof	BGD 450/500
Gravity Louvre shutter	SJ 450/500
Roof duct	DDR 355/400/450/500
Gravity Back draft damper	VKS 355/400/450/499/500
Dakopstand schuindak	DS 450/500
Dakopstand schuindak/loodslabbe	DSL 450/500
Speed control	STRS4-40L40

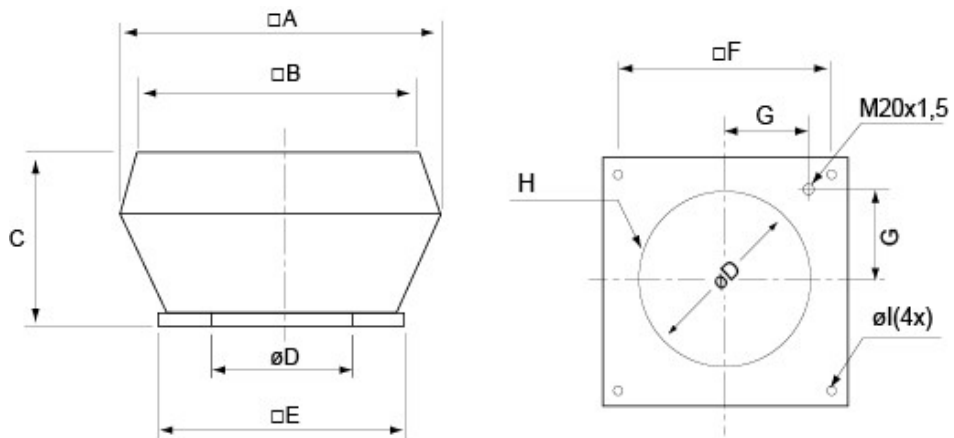
Assembly examples:



Curve:



Dimensions:



□A	□B	C	∅D	□E	□F	G	H	∅l
900	730	465	438	665	535	237	6xM8	12(4x)