



Vertical discharge roof fan model DVS, manufactory ST-Fans.

The impeller is equipped with 3D-profiled backward curved blades and is directly driven by a speed-adjustable outer pole motor.

These roof fans have a high efficiency, excellent noise level and are maintenance-free and reliable. The maximum temperature of the air to be moved is, depending on the type, between 40 ° C and 70 ° C. The base plate is made of galvanized sheet steel.

The rain cover is completely made of seawater resistant aluminum AlMg 3. Sealing tape and mounting material are supplied as standard.

## General data:

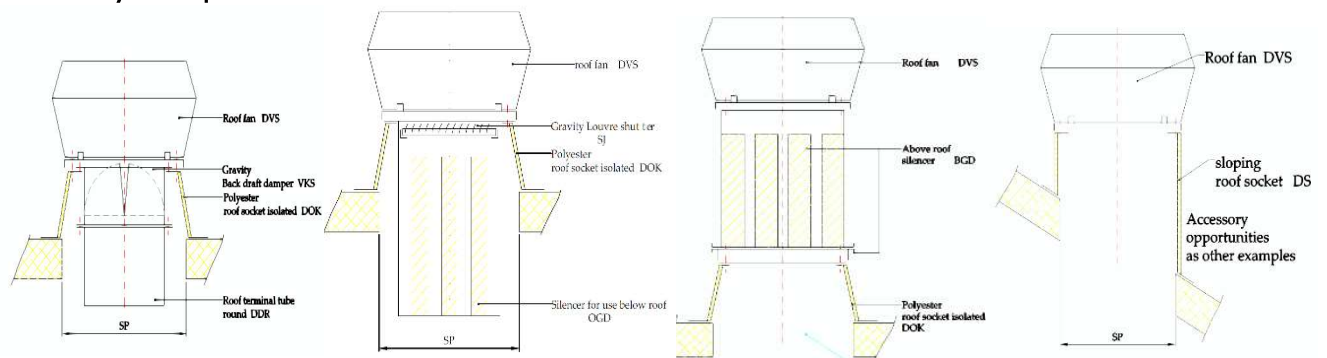
Max Air flow	5407	m3/h
Impeller speed	1.331	rpm
Input power	0,733	kW
Voltage (nominal)	1x230/50	V/Hz
Input current	3,08	A
Enclosure class, motor	54	IP
Weight	36,0	kg
Sound pressure level $\pm 2^*$	57	dB(A)

*\* (at 4 m near the fan with inlet and outlet ducted, in free field)*

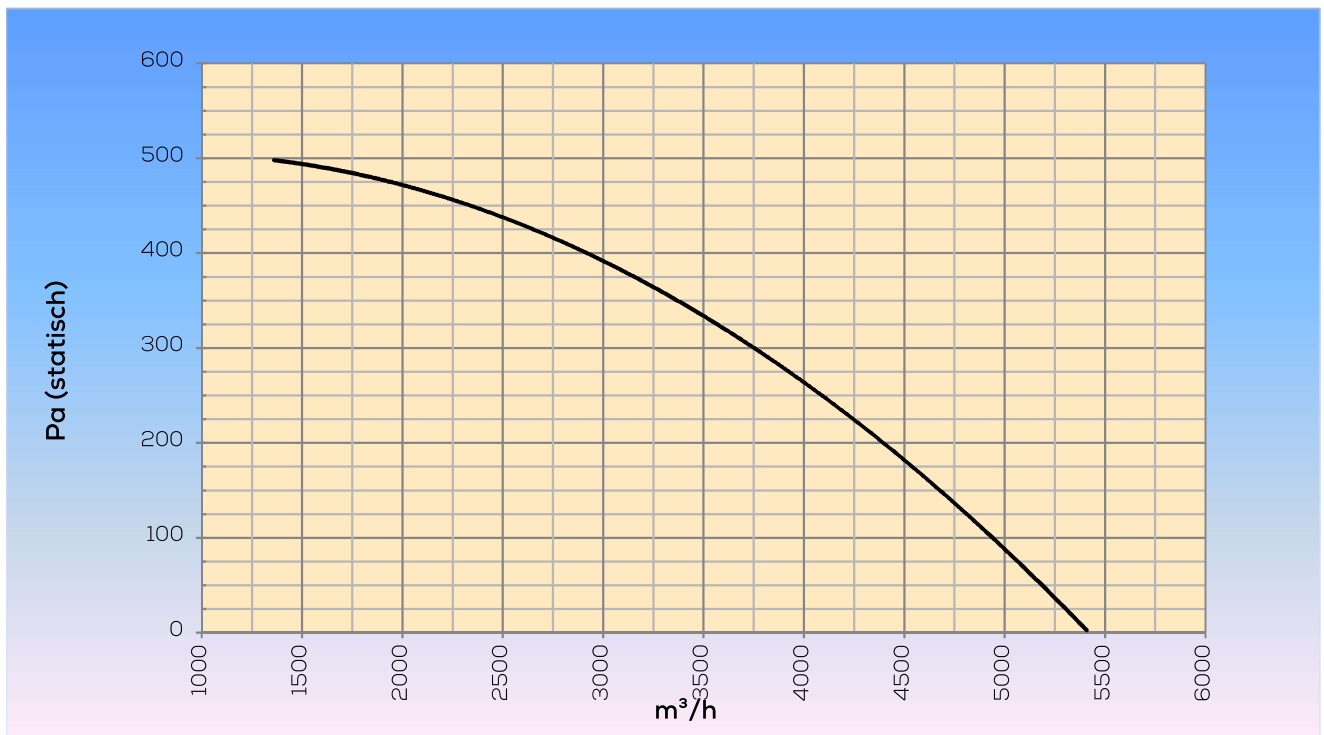
## Options:

Dakopstand vlak dak	DOK 450/499/500
Silencer for use below roof	OGD 450/500
Silencer for use above roof	BGD 450/500
Gravity Louvre shutter	SJ 450/500
Roof duct	DDR 355/400/450/500
Gravity Back draft damper	VKS 355/400/450/499/500
Dakopstand schuindak	DS 450/500
Dakopstand schuindak/loodslabbe	DSL 450/500
Speed control	STRA1-35L22

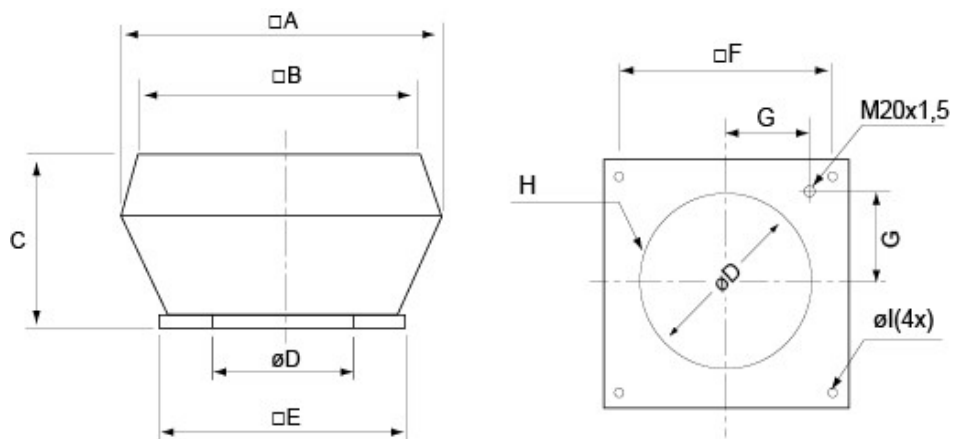
## Assembly examples:



## Curve:



## Dimensions:



□A	□B	C	øD	□E	□F	G	H	øI
900	730	465	438	665	535	237	6xM8	12(4x)