



Vertical discharge roof fan model DVS, manufactory ST-Fans.

The impeller is equipped with 3D-profiled backward curved blades and is directly driven by a speed-adjustable outer pole motor.

These roof fans have a high efficiency, excellent noise level and are maintenance-free and reliable. The maximum temperature of the air to be moved is, depending on the type, between 40 ° C and 70 ° C. The base plate is made of galvanized sheet steel.

The rain cover is completely made of seawater resistant aluminum AlMg 3. Sealing tape and mounting material are supplied as standard.

General data:

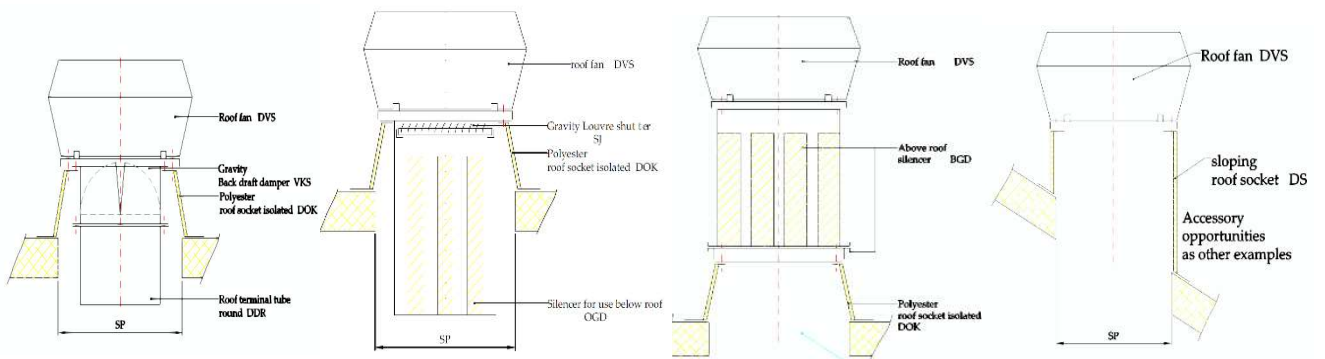
Max Air flow	2290	m ³ /h
Impeller speed	876	rpm
Input power	0,11	kW
Voltage (nominal)	1x230/50	V/Hz
Input current	0,47	A
Enclosure class, motor	54	IP
Weight	23,5	kg
Sound pressure level ±2*	34	dB(A)

* (at 4 m near the fan with inlet and outlet ducted, in free field)

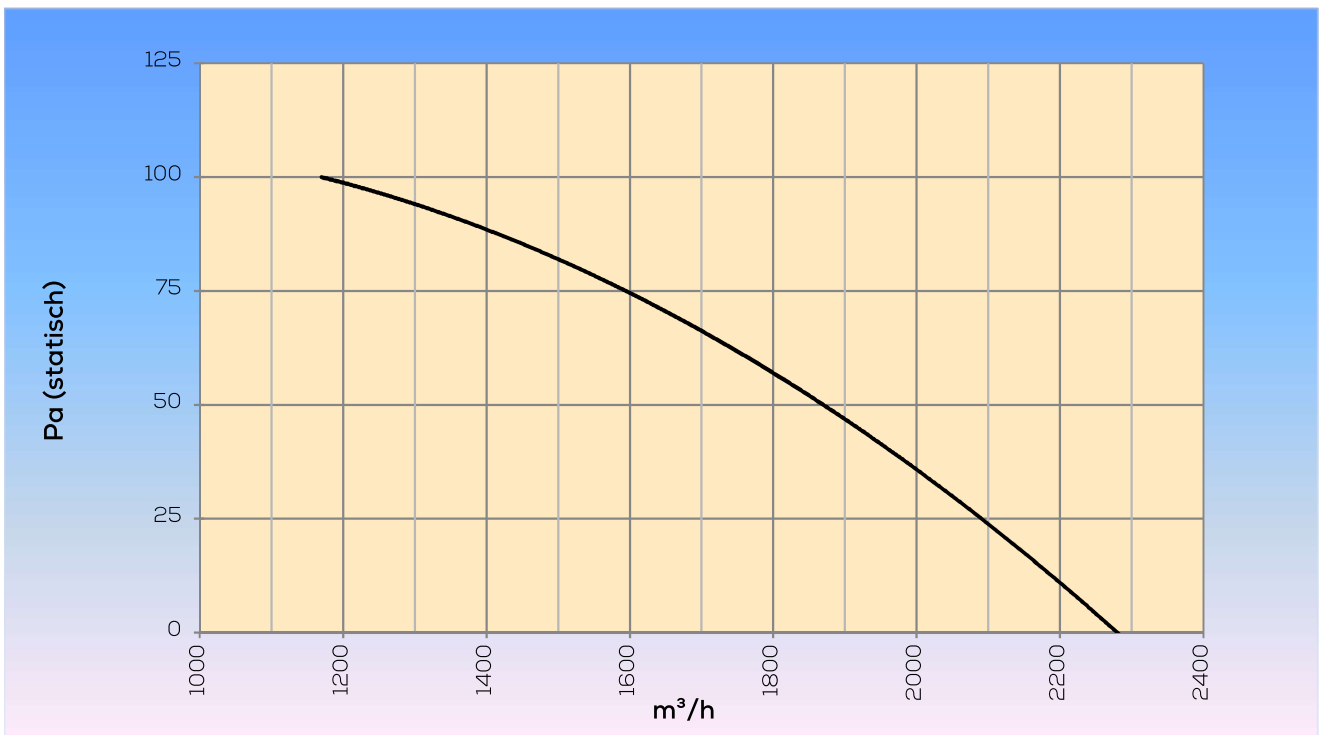
Options:

Dakopstand vlak dak	DOK 355/400
Silencer for use below roof	OGD 355/400
Silencer for use above roof	BGD 355/400
Gravity Louvre shutter	SJ 355/400
Roof duct	DDR 355/400/450/500
Gravity Back draft damper	VKS 355/400/450/499/500
Dakopstand schuindak	DS 355/400
Dakopstand schuindak/loodslabbe	DSL 355/400
Speed control	STR-1-10L10

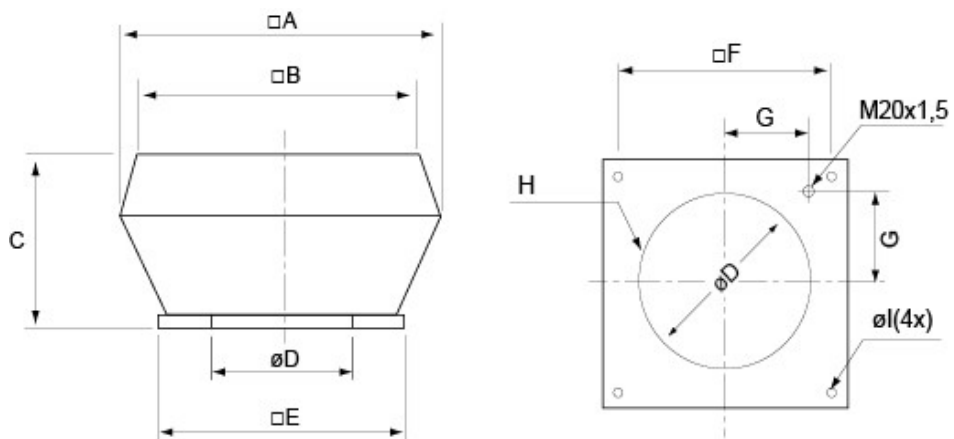
Assembly examples:



Curve:



Dimensions:



A	B	C	$\varnothing D$	E	F	G	H	$\varnothing I$
720	618	390	438	595	450	200	6xM8	12(4x)