



Vertical discharge roof fan model DVS, manufactory ST-Fans.

The impeller is equipped with 3D-profiled backward curved blades and is directly driven by a speed-adjustable outer pole motor.

These roof fans have a high efficiency, excellent noise level and are maintenance-free and reliable. The maximum temperature of the air to be moved is, depending on the type, between 40 ° C and 70 ° C. The base plate is made of galvanized sheet steel.

The rain cover is completely made of seawater resistant aluminum AlMg 3. Sealing tape and mounting material are supplied as standard.

### General data:

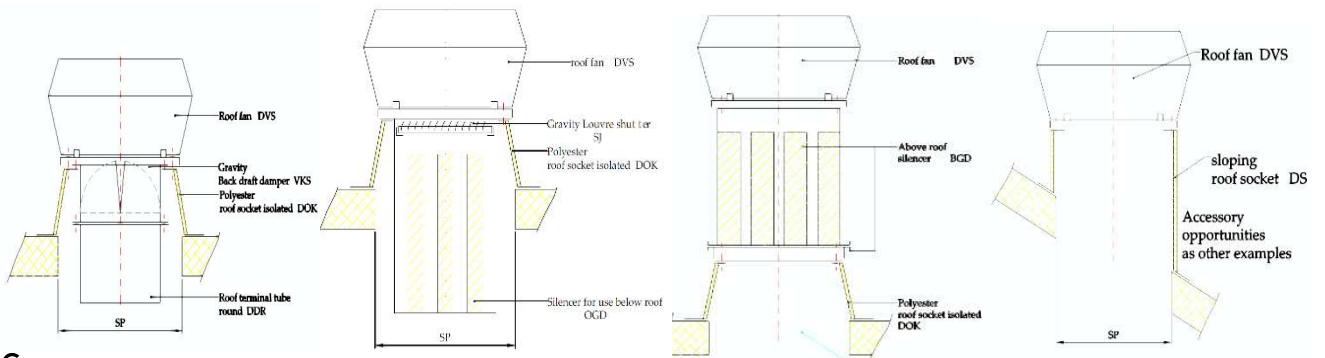
Max Air flow	1.505	m <sup>3</sup> /h
Impeller speed	1.368	rpm
Input power	0,111	kW
Voltage (nominal)	3x400/50	V/Hz
Input current	0,22	A
Enclosure class, motor	44	IP
Weight	13,0	kg
Sound pressure level ±2*	44	dB(A)

\* (at 4 m near the fan with inlet and outlet ducted, in free field)

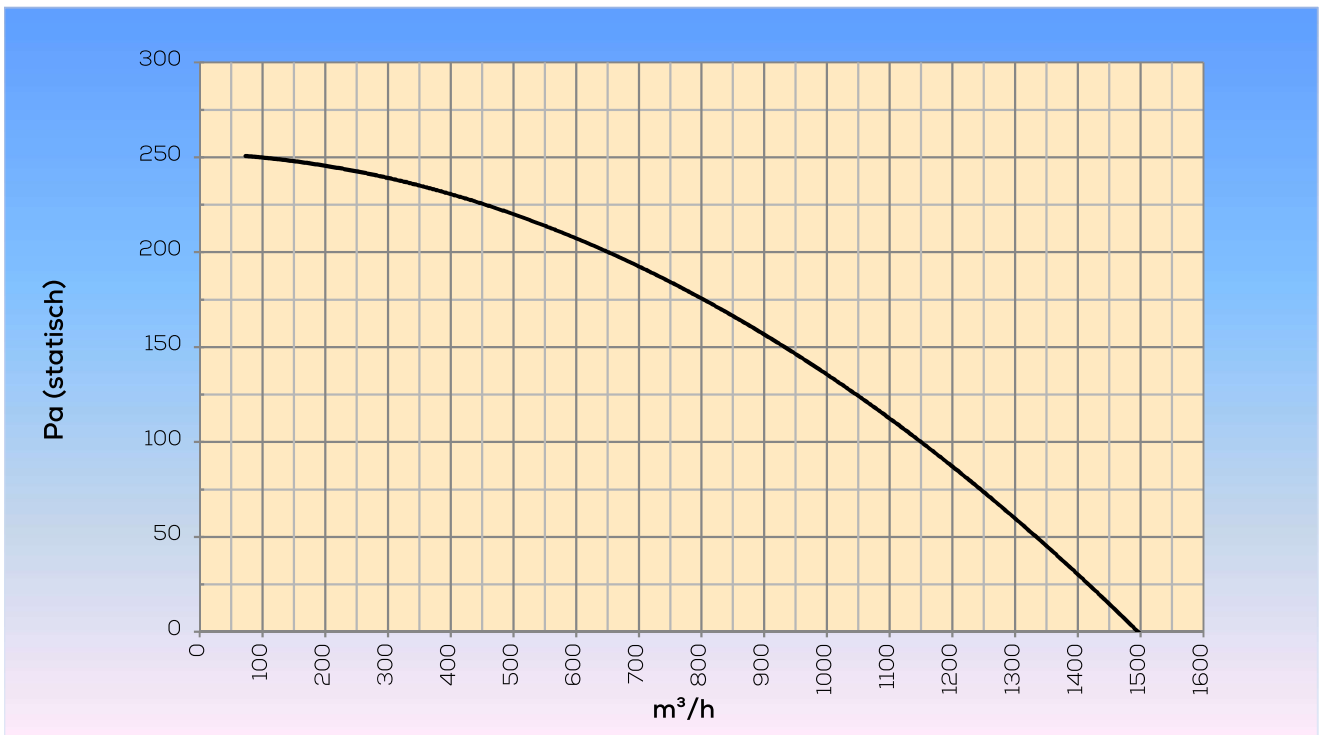
### Options:

Dakopstand vlak dak	DOK 310/311/315
Silencer for use below roof	OGD 310/311/315
Silencer for use above roof	BGD 310/311/315
Gravity Louvre shutter	SJ 310/311/315
Roof duct	DDR 310/311/315
Gravity Back draft damper	VKS 310/311/315
Dakopstand schuindak	DS 310/311/315
Dakopstand schuindak/loodslabbe	DSL 310/311/315
Speed control	STRS4-12L40

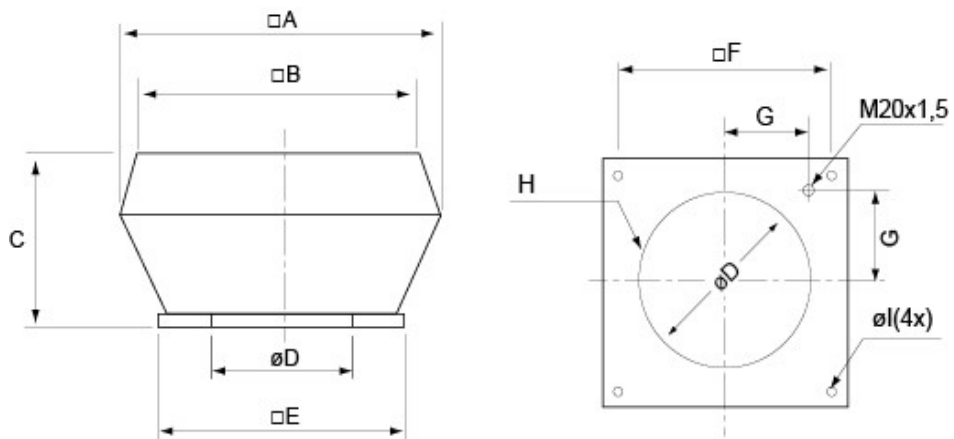
Assembly examples:



Curve:



Dimensions:



□A	□B	C	øD	□E	□F	G	H	øl
560	470	330	285	435	330	146	6xM6	10(4x)