



Vertical discharge roof fan model DVS, manufactory ST-Fans.

The impeller is equipped with 3D-profiled backward curved blades and is directly driven by a speed-adjustable outer pole motor.

These roof fans have a high efficiency, excellent noise level and are maintenance-free and reliable. The maximum temperature of the air to be moved is, depending on the type, between 40 ° C and 70 ° C. The base plate is made of galvanized sheet steel.

The rain cover is completely made of seawater resistant aluminum AlMg 3. Sealing tape and mounting material are supplied as standard.

General data:

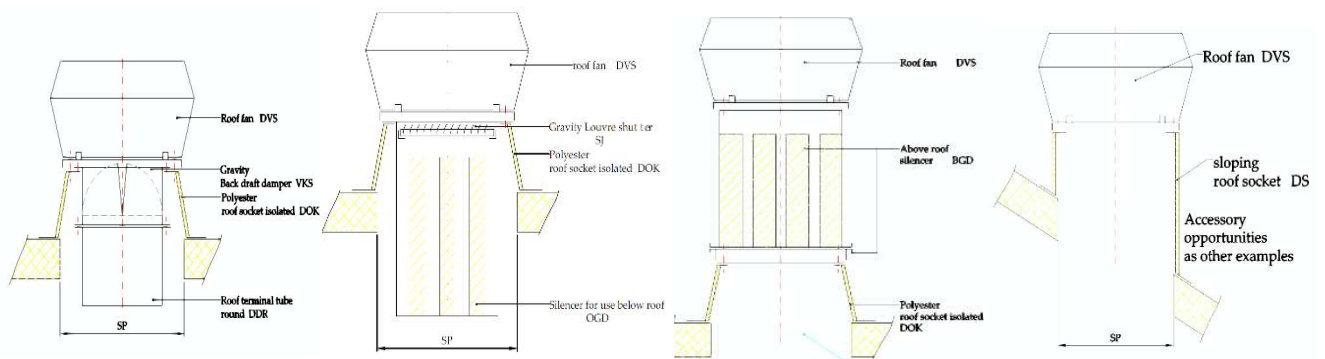
Max Air flow	1670	m3/h
Impeller speed	1.342	rpm
Input power	0,132	kW
Voltage (nominal)	1x230/50	V/Hz
Input current	0,574	A
Enclosure class, motor	44	IP
Weight	12,8	kg
Sound pressure level $\pm 2^*$	48	dB(A)

** (at 4 m near the fan with inlet and outlet ducted, in free field)*

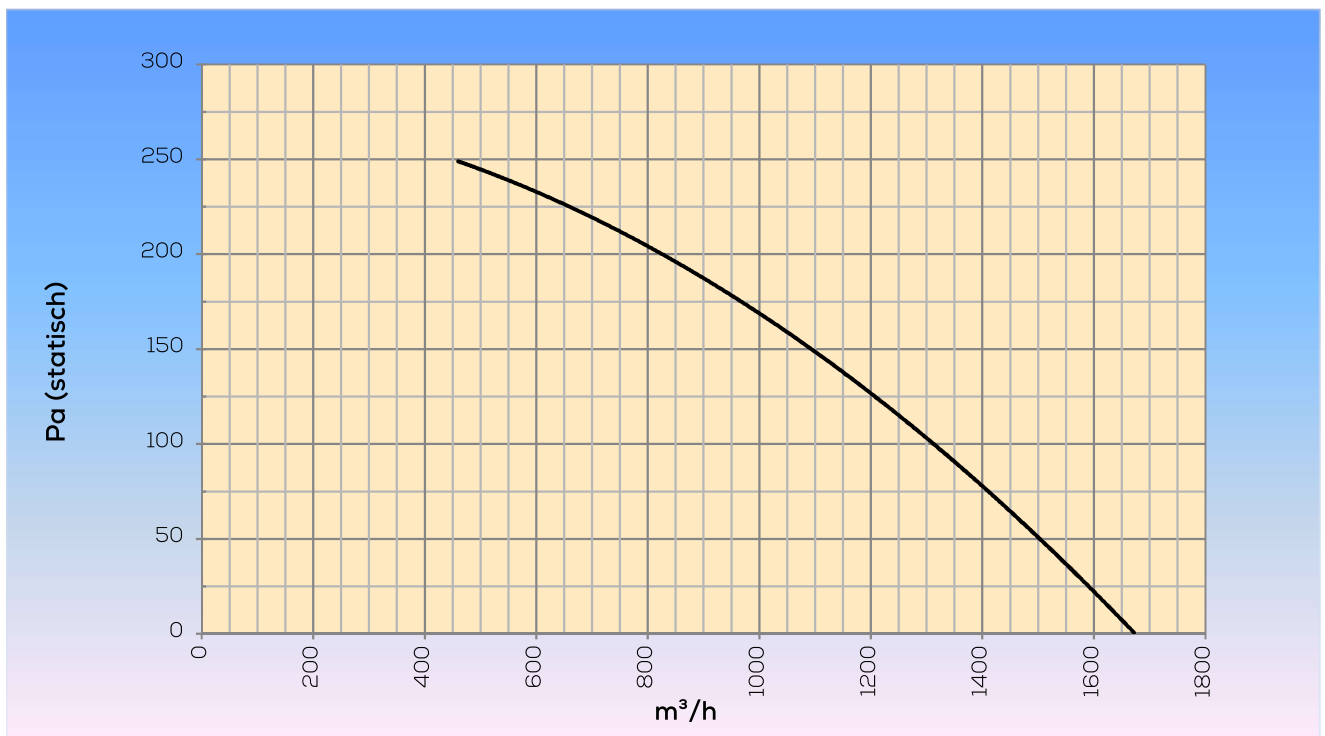
Options:

Dakopstand vlak dak	DOK 310/311/315
Silencer for use below roof	OGD 310/311/315
Silencer for use above roof	BGD 310/311/315
Gravity Louvre shutter	SJ 310/311/315
Roof duct	DDR 310/311/315
Gravity Back draft damper	VKS 310/311/315
Dakopstand schuindak	DS 310/311/315
Dakopstand schuindak/loodslabbe	DSL 310/311/315
Speed control	STR-1-10L10

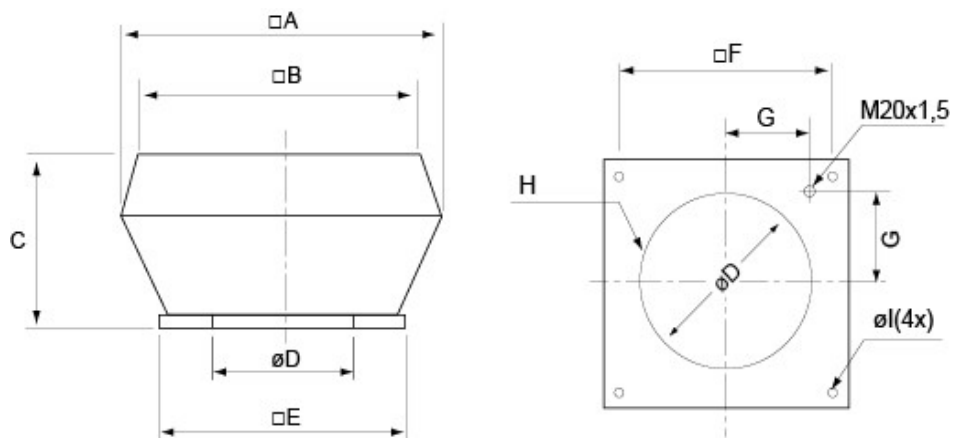
Assembly examples:



Curve:



Dimensions:



□A	□B	C	øD	□E	□F	G	H	øI
560	470	330	285	435	330	146	6xM6	10(4x)