



Vertical discharge roof fan model DVS, manufactory ST-Fans.

The impeller is equipped with 3D-profiled backward curved blades and is directly driven by a speed-adjustable outer pole motor.

These roof fans have a high efficiency, excellent noise level and are maintenance-free and reliable. The maximum temperature of the air to be moved is, depending on the type, between 40 ° C and 70 ° C. The base plate is made of galvanized sheet steel.

The rain cover is completely made of seawater resistant aluminum AlMg 3. Sealing tape and mounting material are supplied as standard.

### General data:

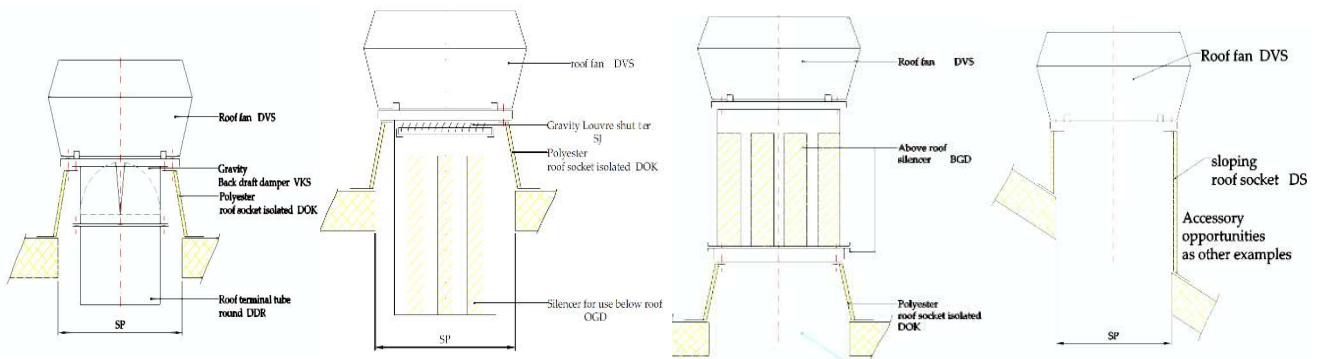
Max Air flow	1462	m3/h
Impeller speed	1.375	rpm
Input power	0,114	kW
Voltage (nominal)	1x230/50	V/Hz
Input current	0,526	A
Enclosure class, motor	44	IP
Weight	12,3	kg
Sound pressure level ±2*	44	dB(A)

*\* (at 4 m near the fan with inlet and outlet ducted, in free field)*

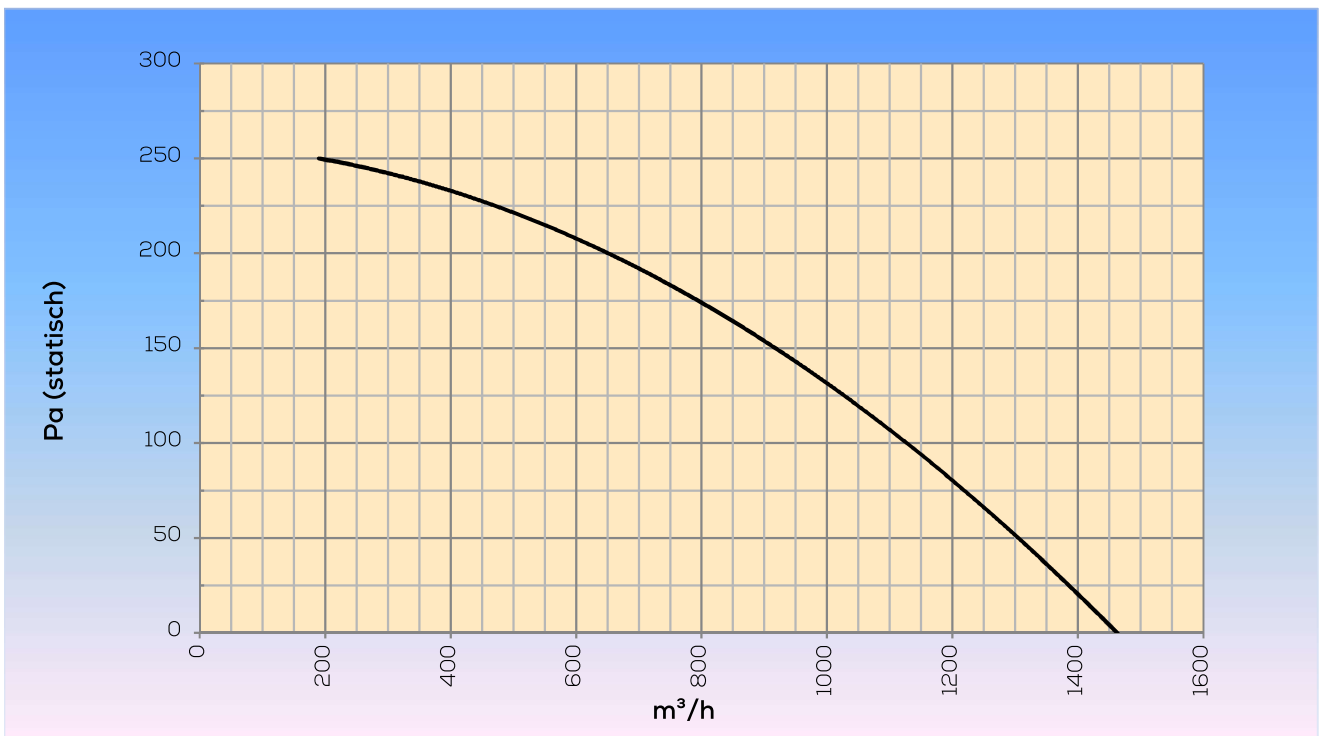
### Options:

Dakopstand vlak dak	DOK 310/311/315
Silencer for use below roof	OGD 310/311/315
Silencer for use above roof	BGD 310/311/315
Gravity Louvre shutter	SJ 310/311
Roof duct	DDR 310/311
Gravity Back draft damper	VKS 310/311
Dakopstand schuindak	DS 310/311
Dakopstand schuindak/loodslabbe	DSL 310/311
Speed control	STR-1-10L10

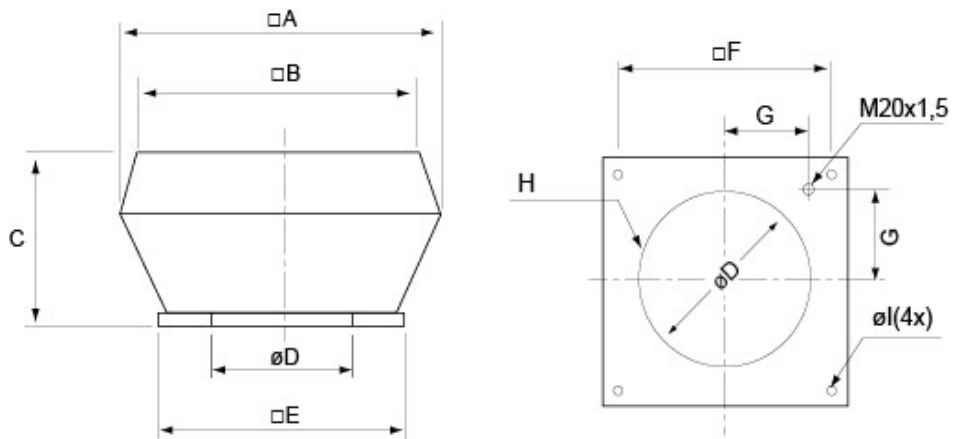
Assembly examples:



Curve:



Dimensions:



□A	□B	C	∅D	□E	□F	G	H	∅l
560	470	330	285	435	330	146	6xM6	10(4x)

