



Vertical discharge roof fan model DVS, manufactory ST-Fans.

The impeller is equipped with 3D-profiled backward curved blades and is directly driven by a speed-adjustable outer pole motor.

These roof fans have a high efficiency, excellent noise level and are maintenance-free and reliable. The maximum temperature of the air to be moved is, depending on the type, between 40 ° C and 70 ° C. The base plate is made of galvanized sheet steel.

The rain cover is completely made of seawater resistant aluminum AlMg 3. Sealing tape and mounting material are supplied as standard.

General data:

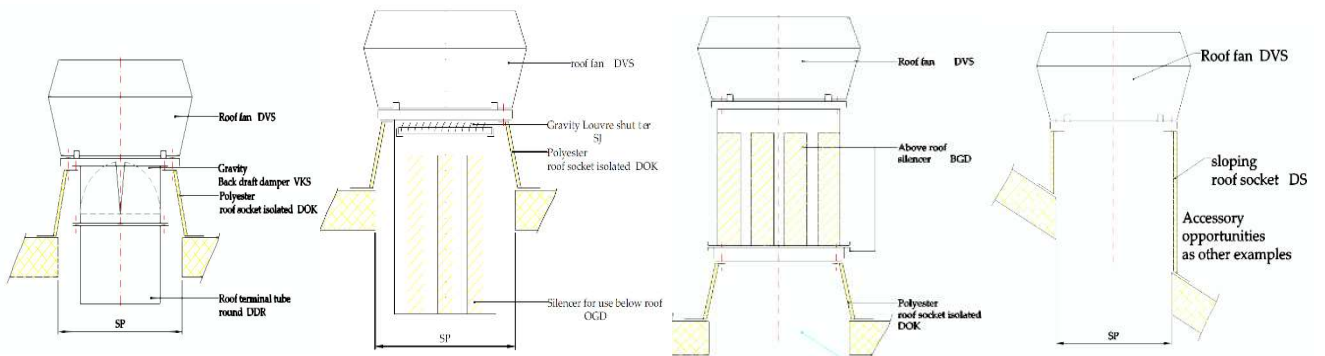
Max Air flow	835	m ³ /h
Impeller speed	2.560	rpm
Input power	0,11	kW
Voltage (nominal)	1x230/50	V/Hz
Input current	0,466	A
Enclosure class, motor	44	IP
Weight	5,2	kg
Sound pressure level ±2*	42	dB(A)

* (at 4 m near the fan with inlet and outlet ducted, in free field)

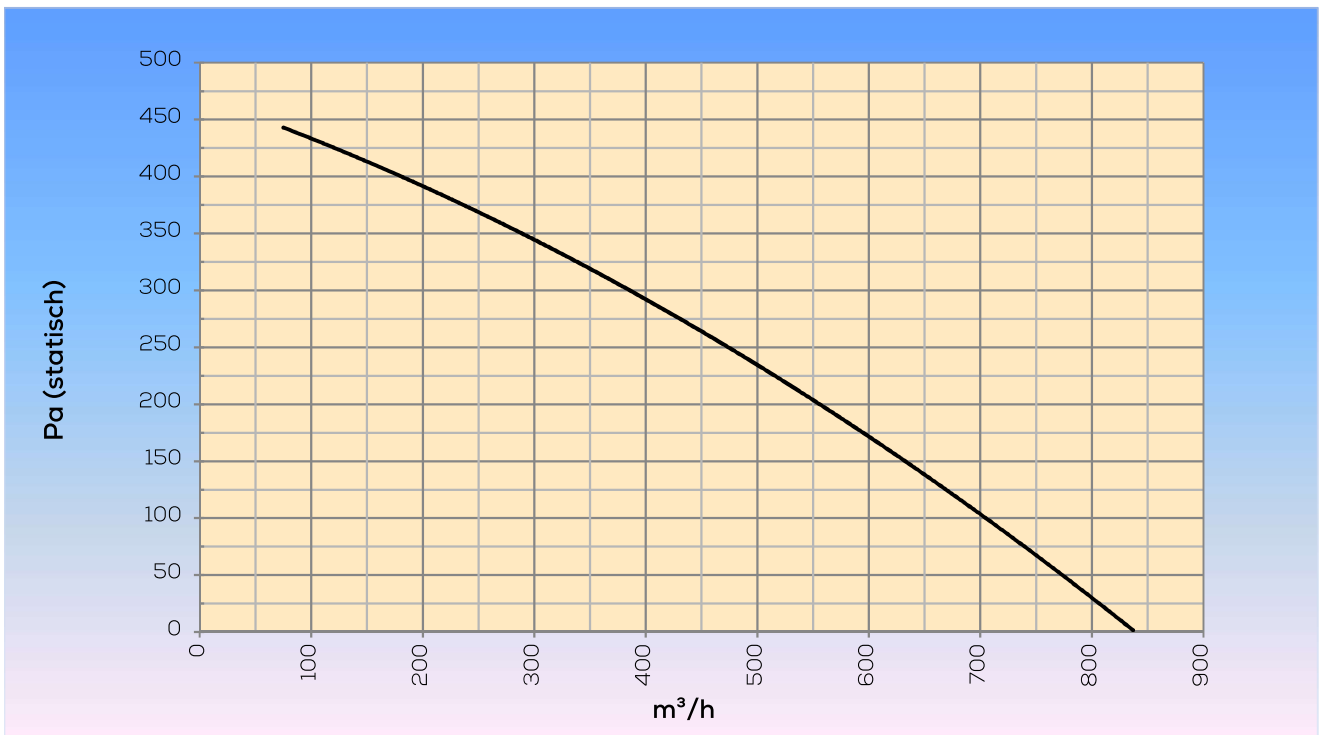
Options:

Dakopstand vlak dak	DOK 190/225
Silencer for use below roof	OGD 190/225
Silencer for use above roof	BGD190/225
Gravity Louvre shutter	SJ 190/225
Roof duct	DDR 190/225
Gravity Back draft damper	VKS 190/225
Dakopstand schuindak	DS 190/225
Dakopstand schuindak/loodslabbe	DSL 190/225
Speed control	STR-1-10L10

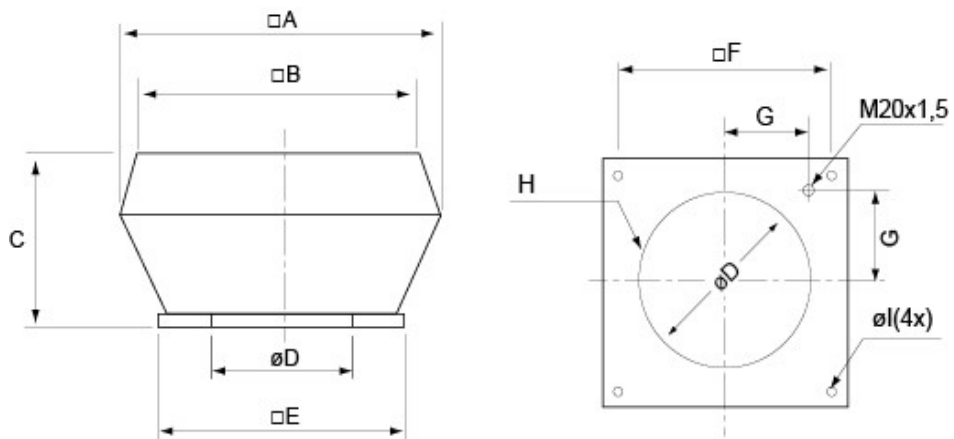
Assembly examples:



Curve:



Dimensions:



A	B	C	$\varnothing D$	E	F	G	H	$\varnothing l$
370	295	170	213	335	245	105	6xM6	10(4x)