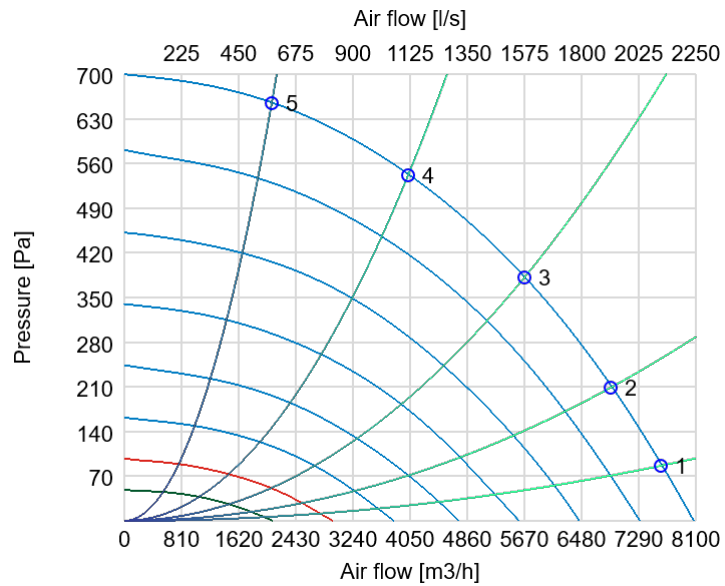
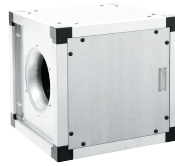


Technical parameters

Unit name: KUB 67-500 EKO
Art.no:

Date: 2020-06-04
Order number



Technical parameters

Max air flow	m³/h	8071
Max pressure	Pa	699
Voltage/Frequency	VAC/Hz	400/50
Power	W	1275
Enclosure class		54
RPM		1400
Current	A	2.04
Phases		3
Weight [kg]	kg	51

Climate data

Air flow	Air flow	1000m³/h
Pressure drop duct system	External pressure (Supply)	600Pa

Technical parameters

Unit name: KUB 67-500 EKO
Art.no:

Date: 2020-06-04
Order number

Fans

		Point 1	Point 2	Point 3	Point 4	Point 5
	Unit	supply	supply	supply	supply	supply
Air flow	m ³ /h	7602.63	6892.11	5670.00	4021.58	2088.95
Pressure	Pa	86.32	208.74	381.39	541.48	654.48
Power	W	991.02	1123.06	1258.93	1220.87	927.04
Current	A	1.61	1.80	2.01	1.96	1.53
SFP		0.47	0.59	0.80	1.09	1.60

Dimensions

