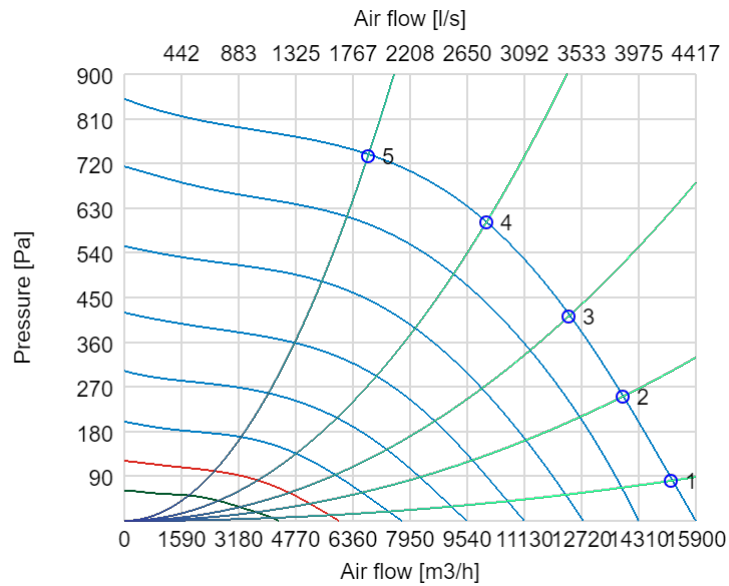
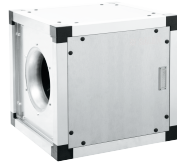


## Technical parameters

Unit name: KUB 100-630 EKO  
Art.no:

Date: 2020-06-05  
Order number



### Technical parameters

Max air flow	m³/h	15900
Max pressure	Pa	850
Voltage/Frequency	VAC/Hz	400/50
Power	W	2935
Enclosure class		54
RPM		1230
Current	A	4.51
Phases		3
Weight [kg]	kg	116

### Climate data

Air flow	Air flow	1000m³/h
Pressure drop duct system	External pressure (Supply)	600Pa

## Technical parameters

Unit name: KUB 100-630 EKO  
Art.no:

Date: 2020-06-05  
Order number

### Fans

		Point 1	Point 2	Point 3	Point 4	Point 5
	Unit	supply	supply	supply	supply	supply
Air flow	m <sup>3</sup> /h	15202.63	13863.68	12357.37	10070.00	6778.42
Pressure	Pa	80.72	250.22	411.66	601.35	734.53
Power	W	2072.00	2407.80	2674.48	2927.97	2623.61
Current	A	3.22	3.69	4.09	4.49	4.03
SFP		0.49	0.63	0.78	1.05	1.39

### Dimensions

