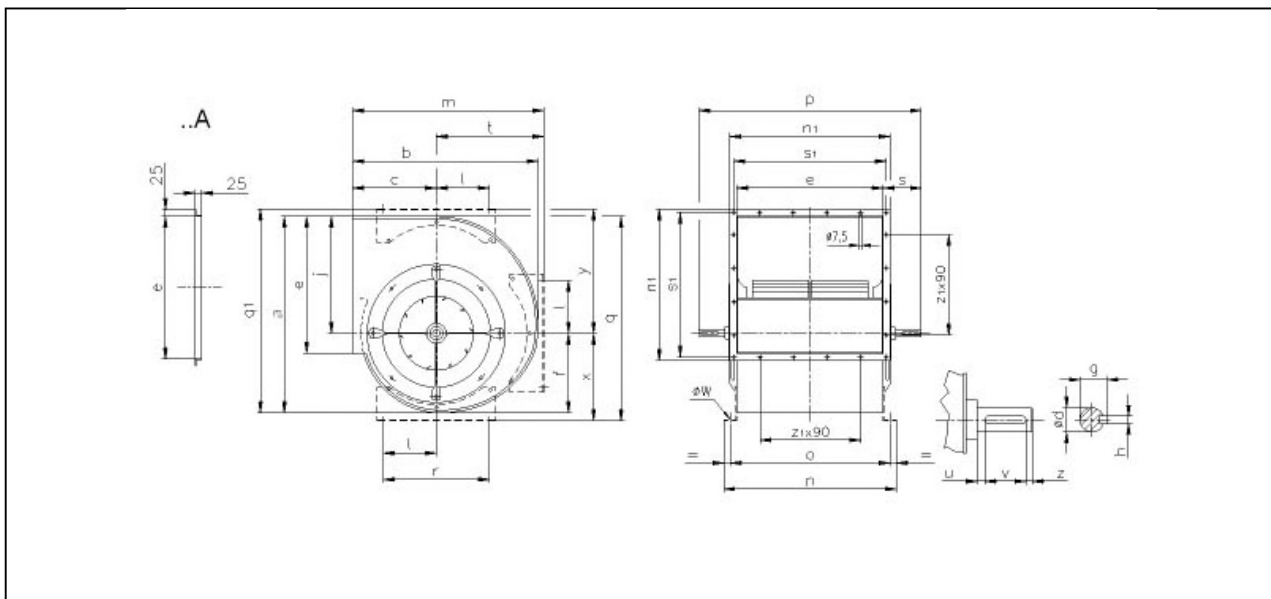
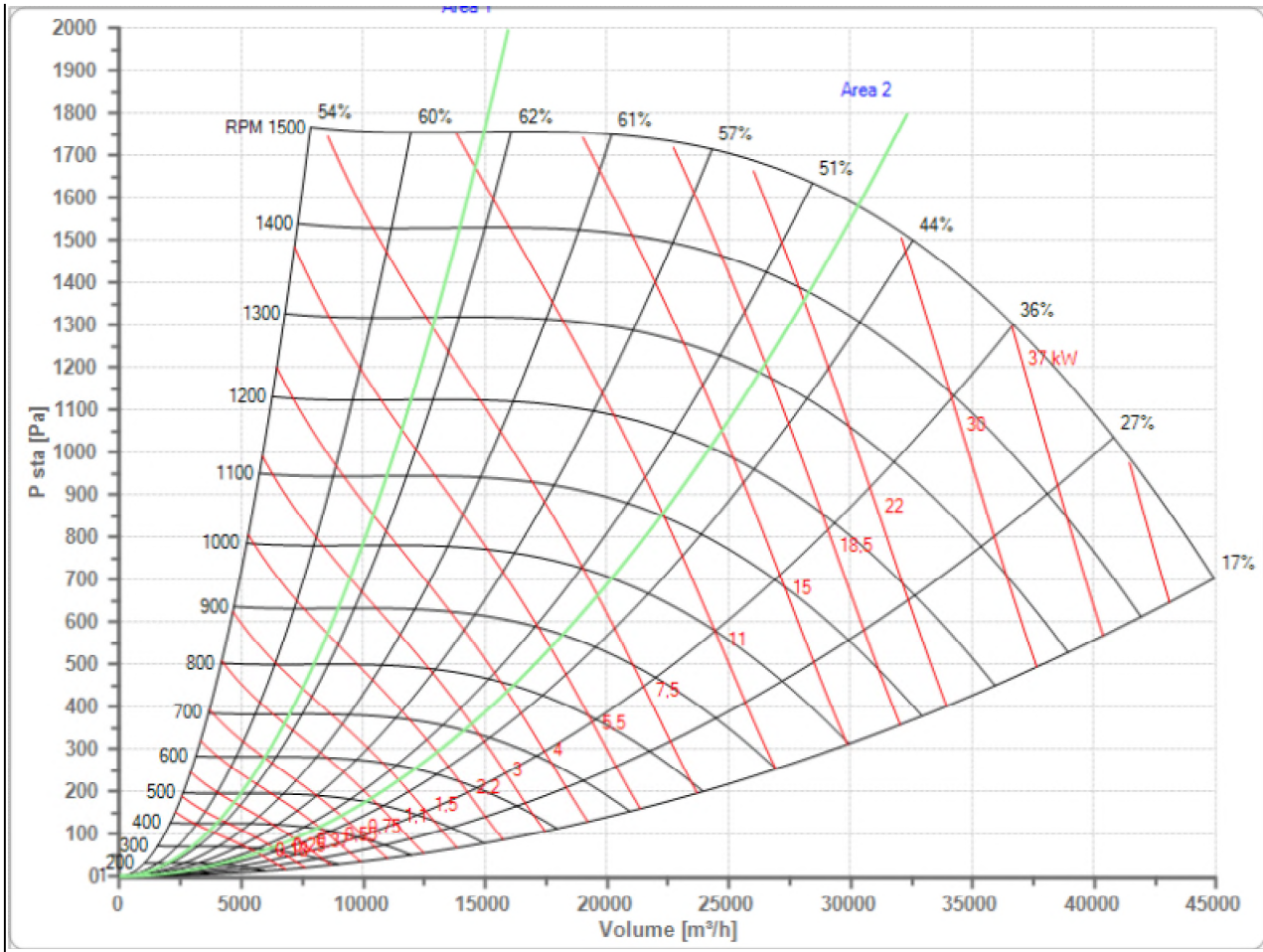


Selected Fan
n Max

TLZ 450
1500 1/min

Fan working conditions
Pw Max

Free Inlet - Free Outlet
11.00 kW



a	b	c	e	f	g	h	j	l	m
818	722	322	569	332	38	10	486	225	729
n	n1	o	ød	øw	p	q	q1	r	s
649	619	609	35	12	810	823	850	450	121
s1	t	u	v	x	y	z	z1		
599	407	11	50	337	519	10	6		