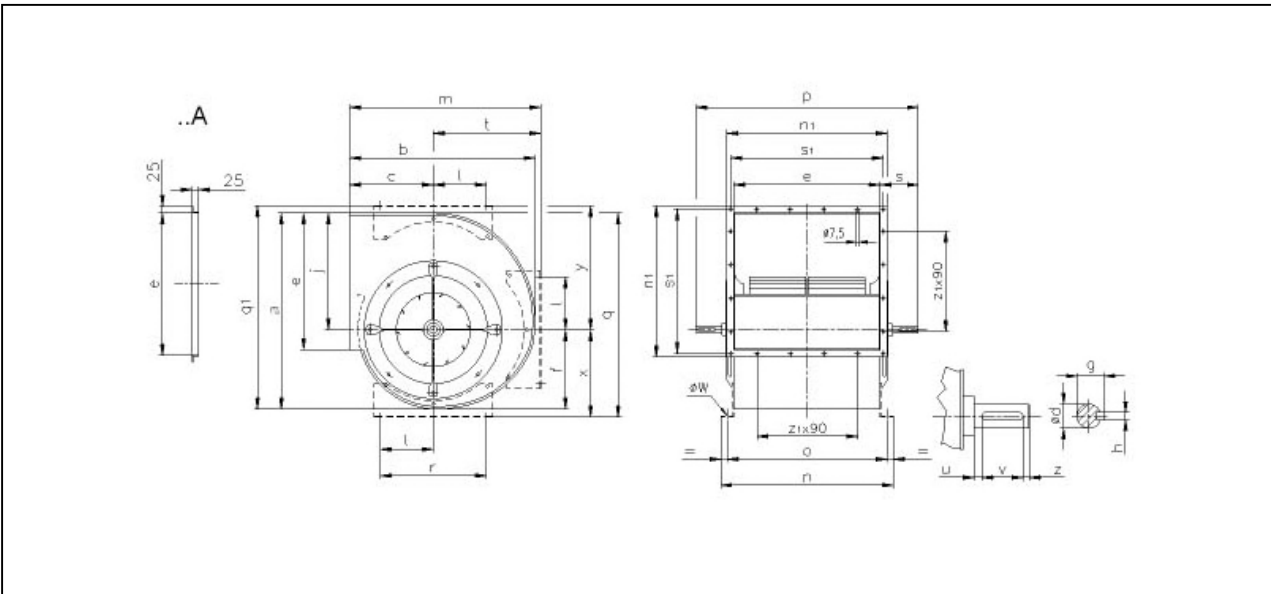
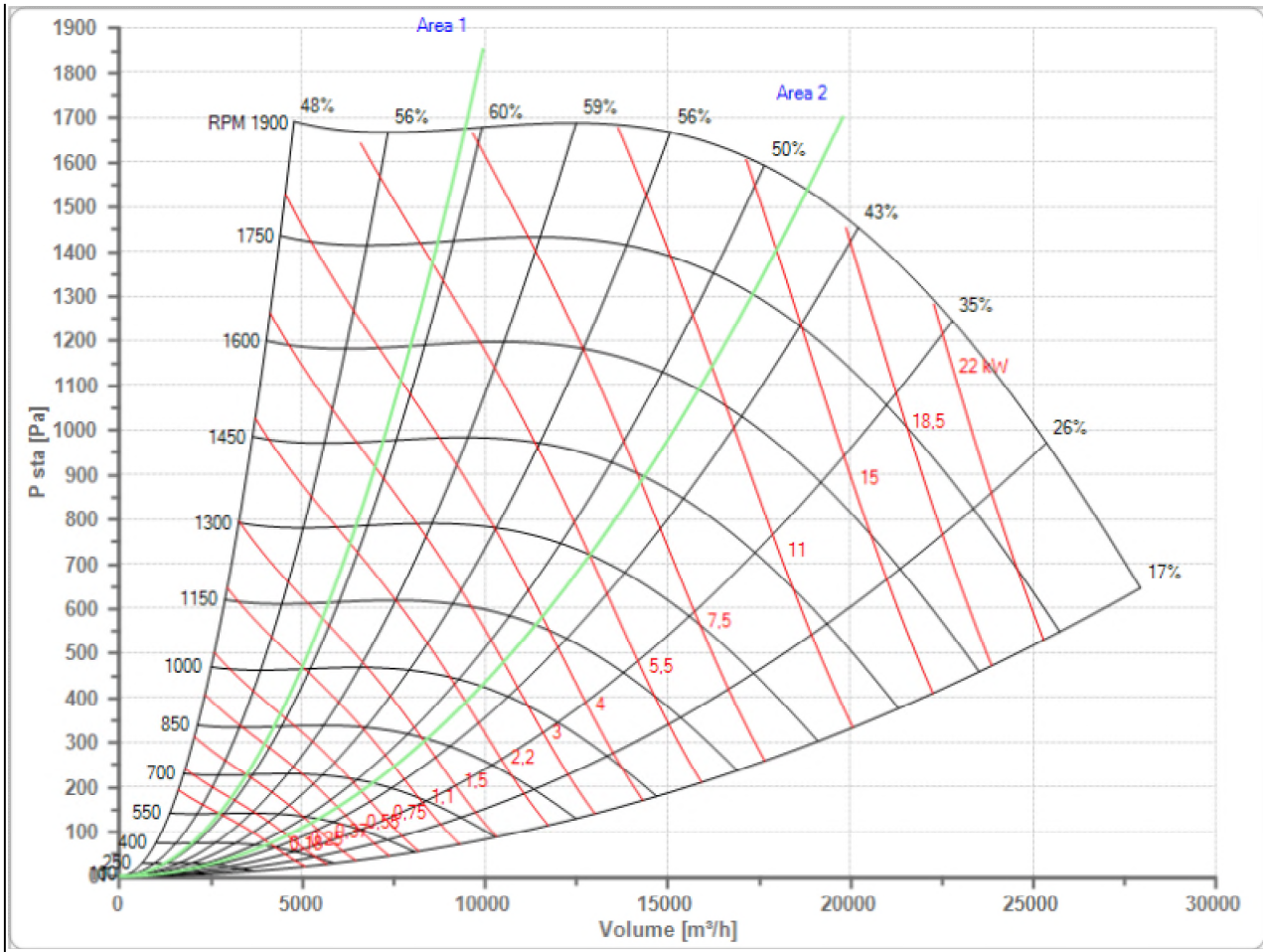


Selected Fan
n Max

TLZ 355
1900 1/min

Fan working conditions
Pw Max

Free Inlet - Free Outlet
9.00 kW



a	b	c	e	f	g	h	j	l	m
646	576	261	453	262	33	8	384	177.5	581
n	n1	o	ød	øw	p	q	q1	r	s
533	503	493	30	10.5	655	657	672	355	101
s1	t	u	v	x	y	z	z1		
483	319	7	40	273	410	10	4		