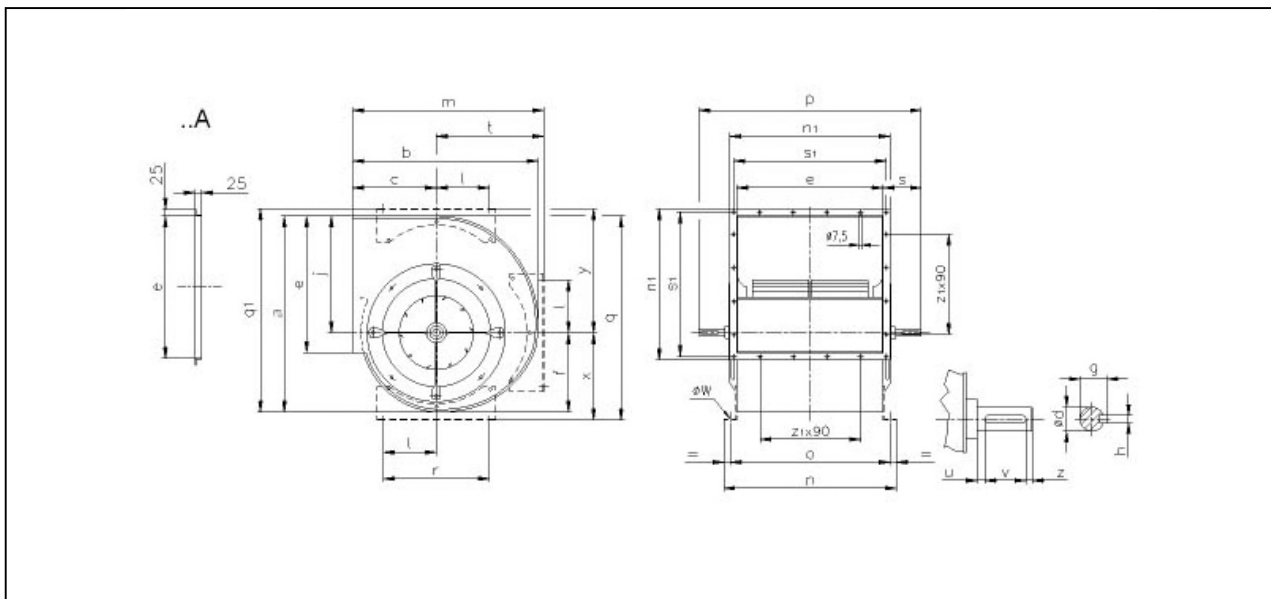
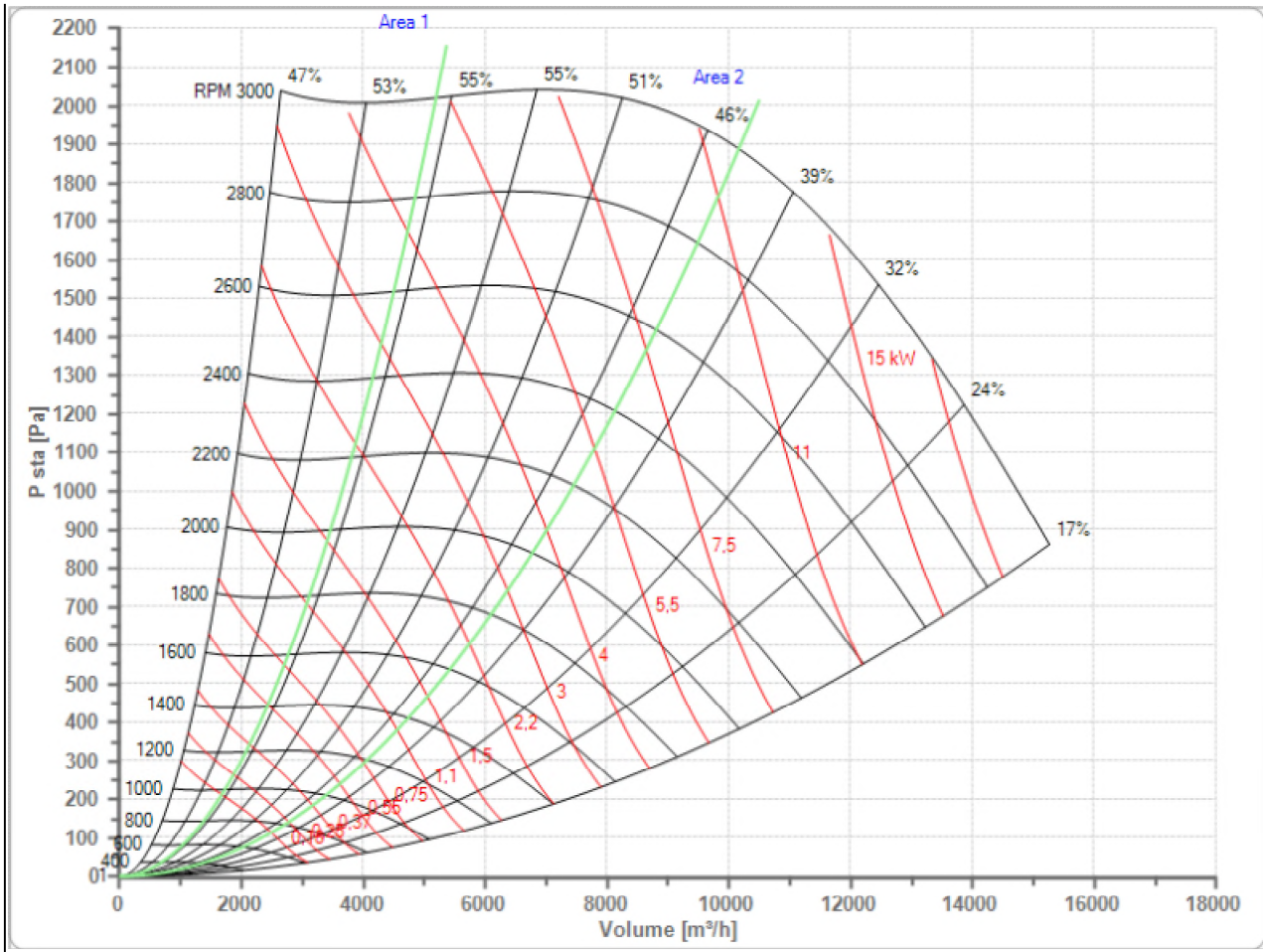


Selected Fan
n Max

TLZ 250
3000 1/min

Fan working conditions
Pw Max

Free Inlet - Free Outlet
5.00 kW



| | | | | | | | | | |
|-----|-----|-----|-----|-----|------|-----|-----|-----|-----|
| a | b | c | e | f | g | h | j | l | m |
| 454 | 417 | 195 | 322 | 184 | 22.5 | 6 | 270 | 112 | 422 |
| n | n1 | o | ød | øw | p | q | q1 | r | s |
| 372 | 372 | 347 | 20 | 7 | 470 | 480 | 483 | 224 | 74 |
| s1 | t | u | v | x | y | z | z1 | | |
| 352 | 227 | 6 | 30 | 210 | 299 | 5 | 3 | | |