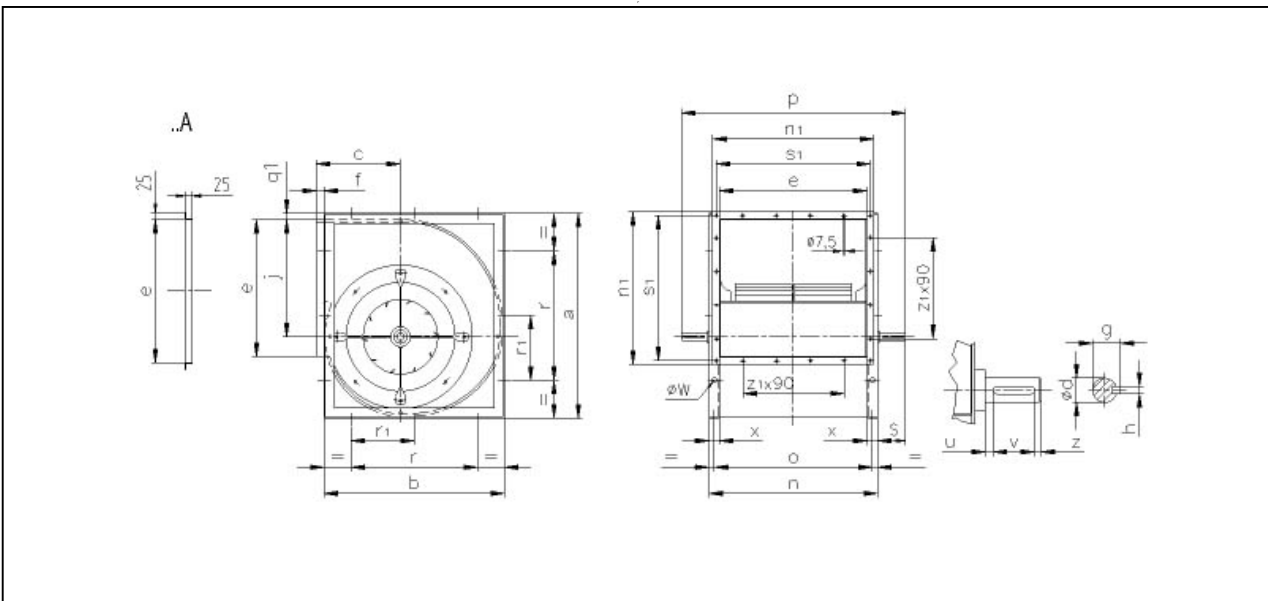
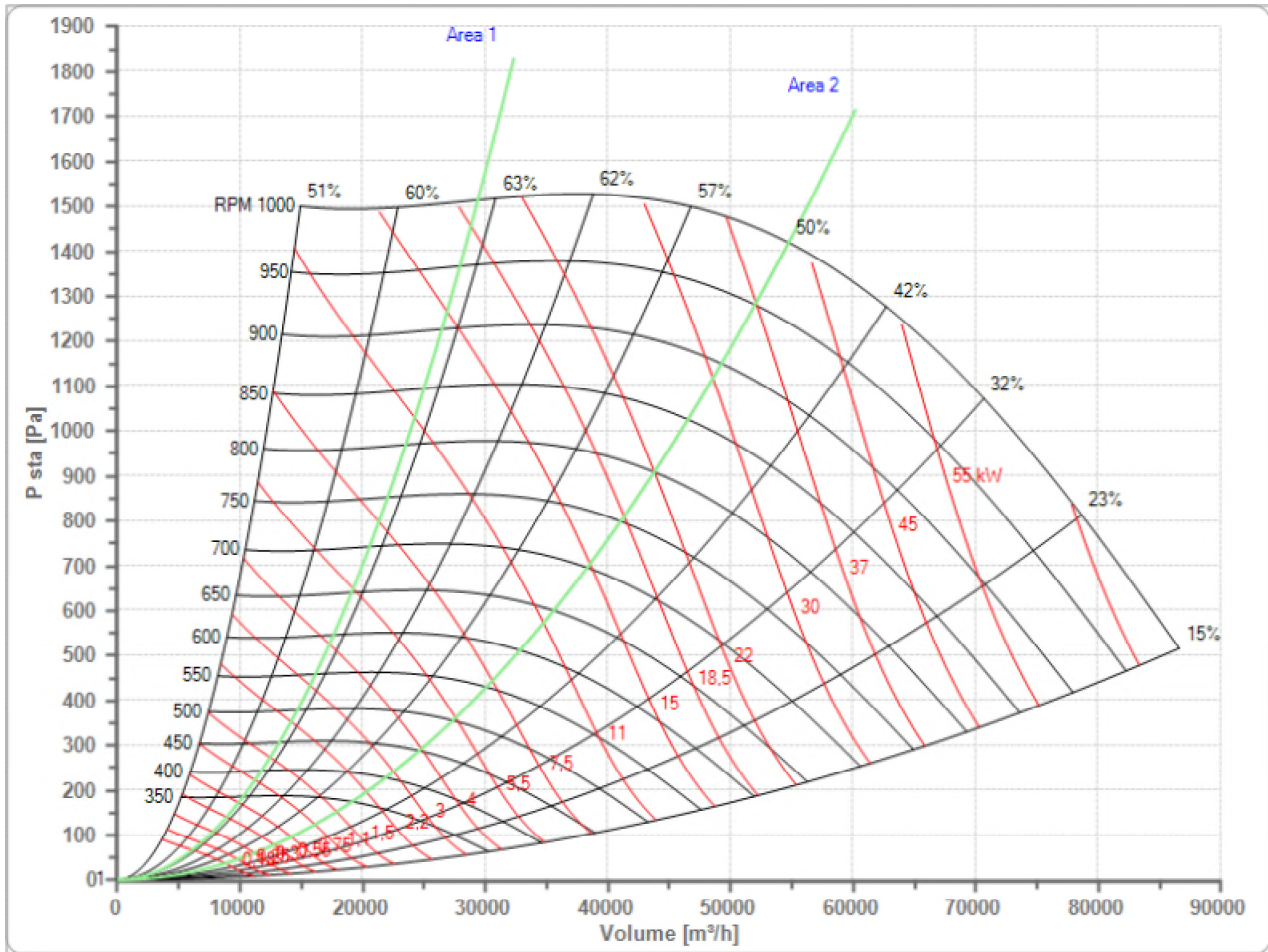


Selected Fan
n Max

TLZ 630 R
1000 1/min

Fan working conditions
Pw Max

Free Inlet - Free Outlet
13.50 kW



a	b	c	e	f	g	h	j	n	n1
1158	936	434	801	62	43	12	681	901	851
o	∅d	∅w	p	q1	r	r1	s	s1	u
851	40	15	1090	7	560	280	95	831	12
v	x	z	z1						
70	50	10	8						