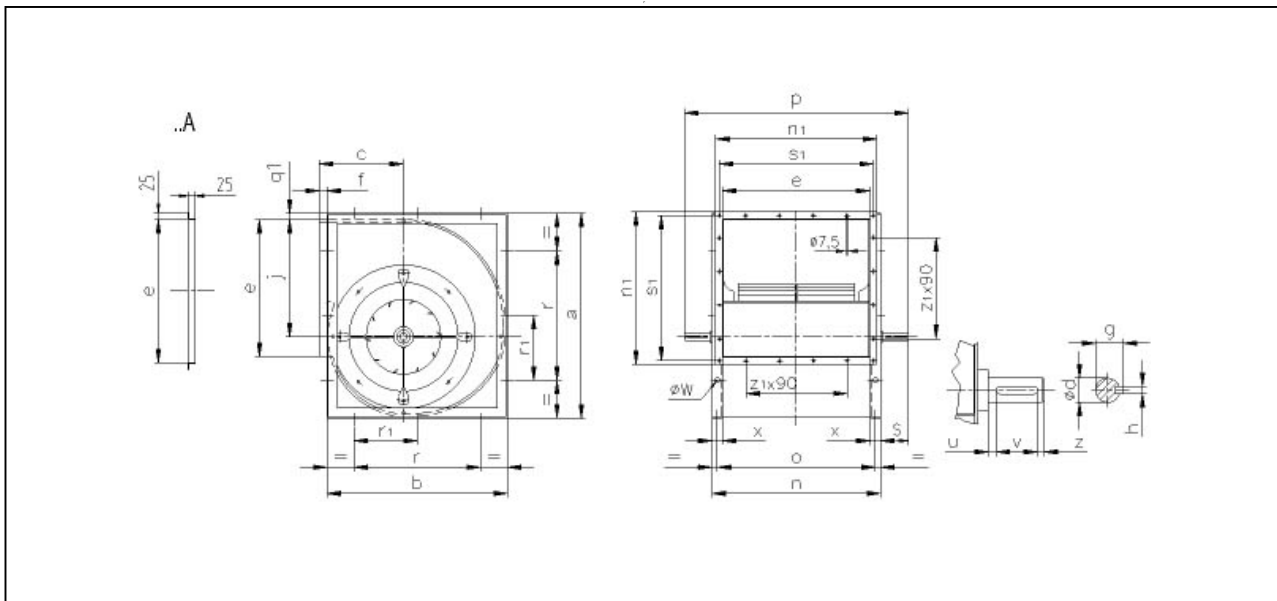
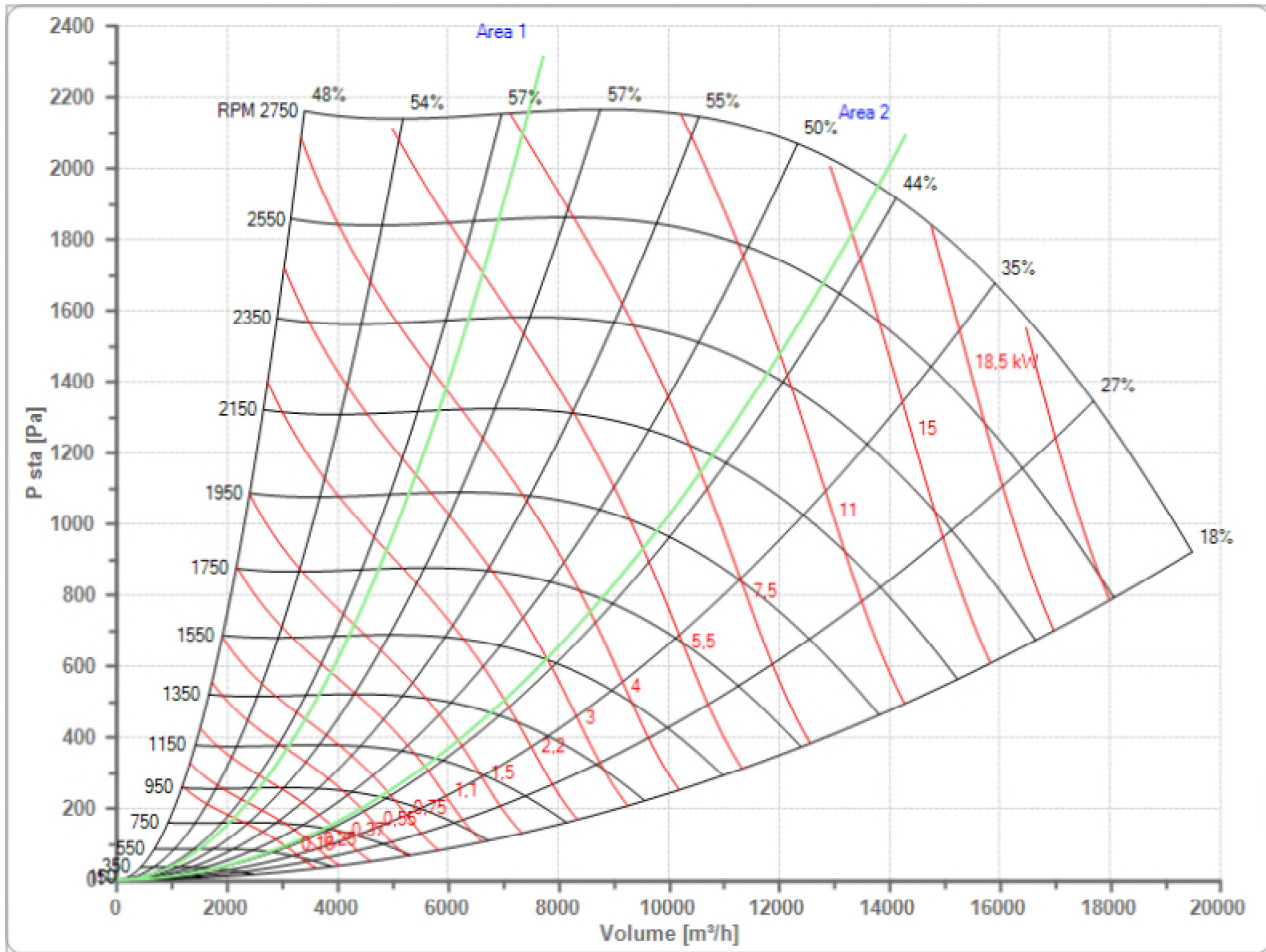


Selected Fan  
n Max

**TLZ 280 R**  
**2730 1/min**

Fan working conditions  
Pw Max

**Free Inlet - Free Outlet**  
**6.30 kW**



a	b	c	e	f	g	h	j	n	n1
518	432	215	361	35	28	8	302	421	411
o	ød	øw	p	q1	r	r1	s	s1	u
391	25	10	540	5	280	-	40	391	4
v	x	z	z1						
40	30	5	3						