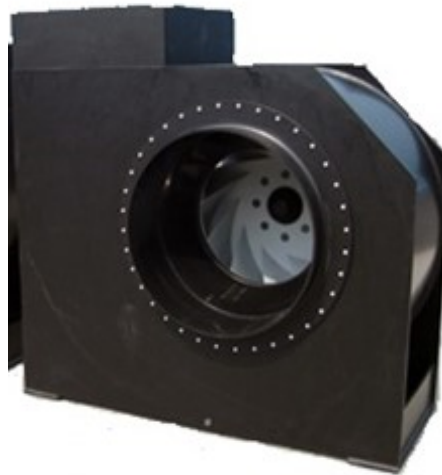


## RMVMAX 630/2.2-8D



These robustly welded plastic fans are particularly well-suited for use in aggressive atmospheric conditions in chemical factories or salty sea air.

Housings are available in PE100 (UV resistant), PP-h, PP-s, and PE-el.  
Impellers are available in PP-h, PP-s, PPs-el, PVDF, AISI A4, or steel-coated options.

### General Data

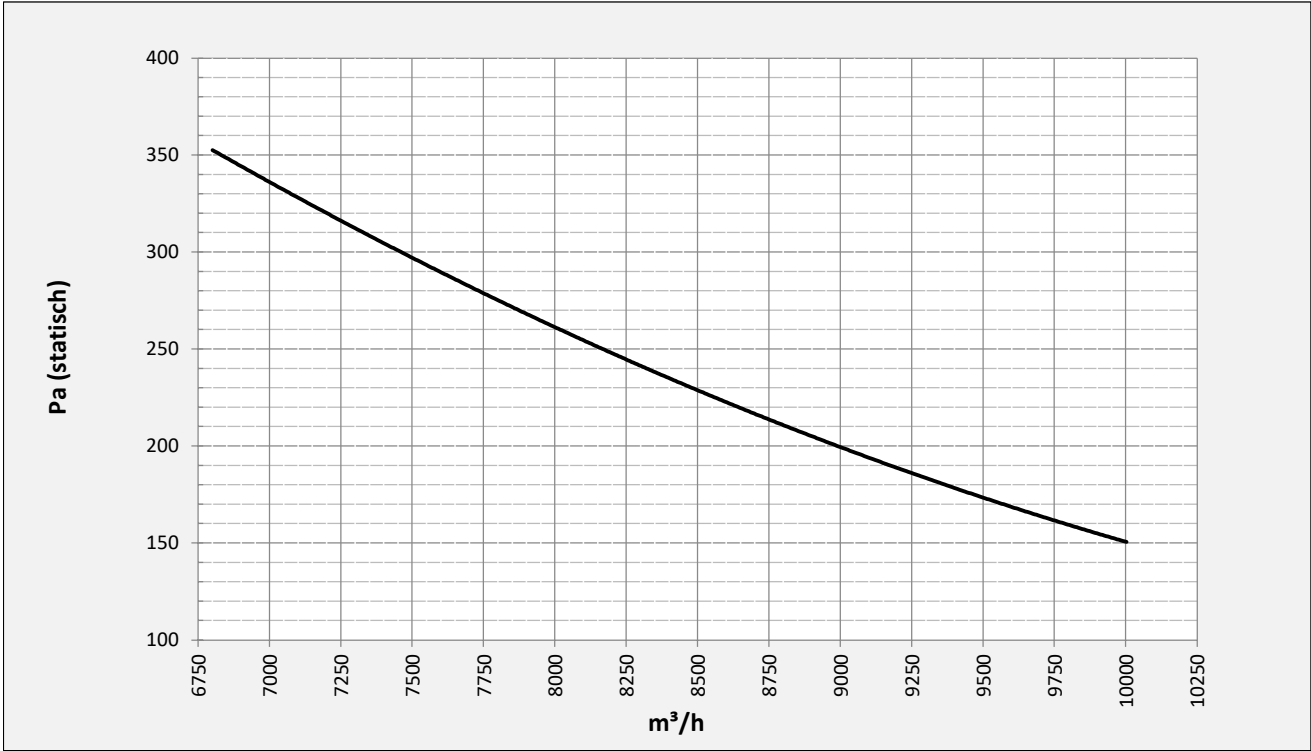
Max. air capacity	10000	m3/h
Impeller speed	700	rpm
Power	2,2	kW
Electric supply	3x400/50	V/Hz
Max current	5,4	A
Enclosure	55	IP
Weight	172	kg
Max. medium temp.	20(50)	°C
Sound pressure level ±2*	82	dB(A)

\* (at 2m near the fan with inlet and outlet ducted, in free field)

### Options:

Flexible connection inlet & outlet	mipolan ø630
Anti-vibration mountings	50x40/B/55°ShA
Ex' motor	EEExe / EEExd(e)
Outlet extension 1m	
Adjustable valve in outlet	
Outlet grill	
Motor cover	
Automatic shutter	

Graph:



**Dimensions: Outlet position RD0**

