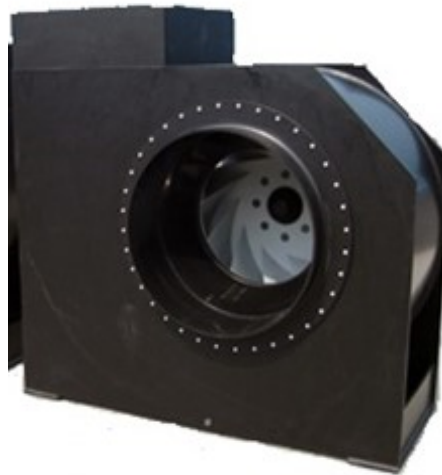


RMVMAX 500/1.1-8D



These robustly welded plastic fans are particularly well-suited for use in aggressive atmospheric conditions in chemical factories or salty sea air.

Housings are available in PE100 (UV resistant), PP-h, PP-s, and PE-el.
Impellers are available in PP-h, PP-s, PPs-el, PVDF, AISI A4, or steel-coated options.

General Data

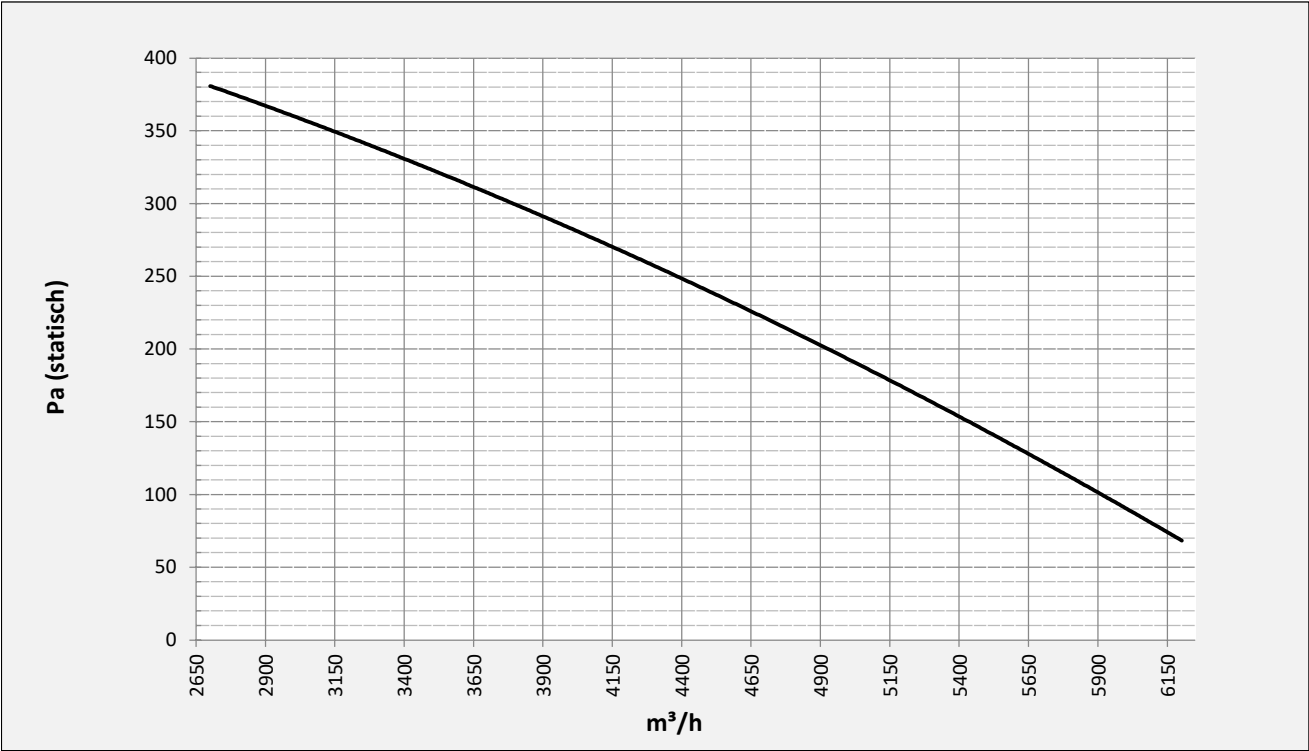
Max. air capacity	6200	m ³ /h
Impeller speed	705	rpm
Power	1,1	kW
Electric supply	3x400/50	V/Hz
Max current	3,4	A
Enclosure	55	IP
Weight	111	kg
Max. medium temp.	20(50)	°C
Sound pressure level ±2*	73	dB(A)

* (at 2m near the fan with inlet and outlet ducted, in free field)

Options:

Flexible connection inlet & outlet	mipolan ø500
Anti-vibration mountings	50x40/B/55°ShA
Ex' motor	EEExe / EEExd(e)
Outlet extension 1m	
Adjustable valve in outlet	
Outlet grill	
Motor cover	
Automatic shutter	

Graph:



Dimensions: Outlet position RD0

