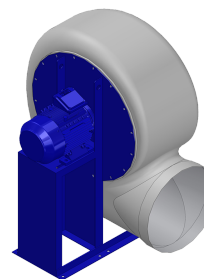


Research Data

| | |
|----------------------------------|-------|
| Air-flow rate[m ³ /h] | 5826 |
| Pressure[Pa] | 546.6 |
| Pressure type | Psta |
| Power supply | all |
| Density[m ³ /h] | 1.205 |



Label

| | |
|---------------|----------|
| Code | KR 636 M |
| Voltage[V] | 400 |
| Phases | 3 |
| Current[A] | |
| Poles | 6 |
| Weight[kg] | 102 |
| Frequency[Hz] | 50 |
| Speed[rpm] | 950 |
| Power[kW] | 2.2 |
| IP | 55 |
| INS | |

Execution:

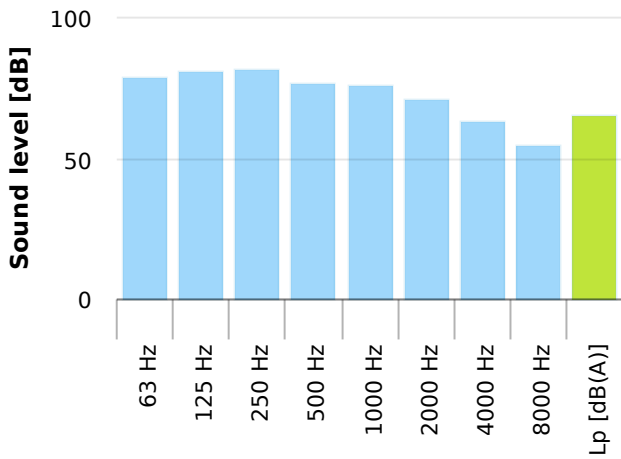
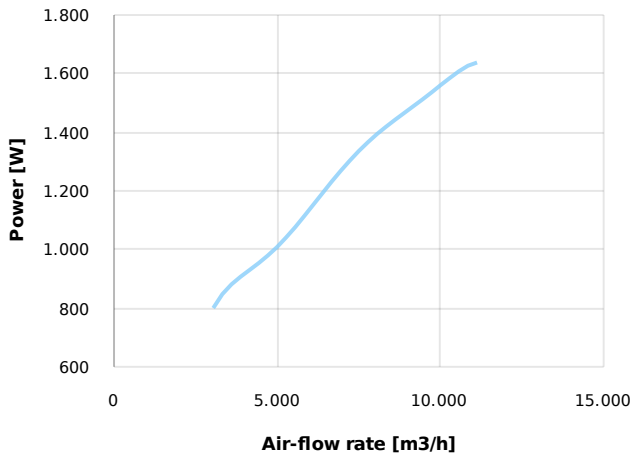
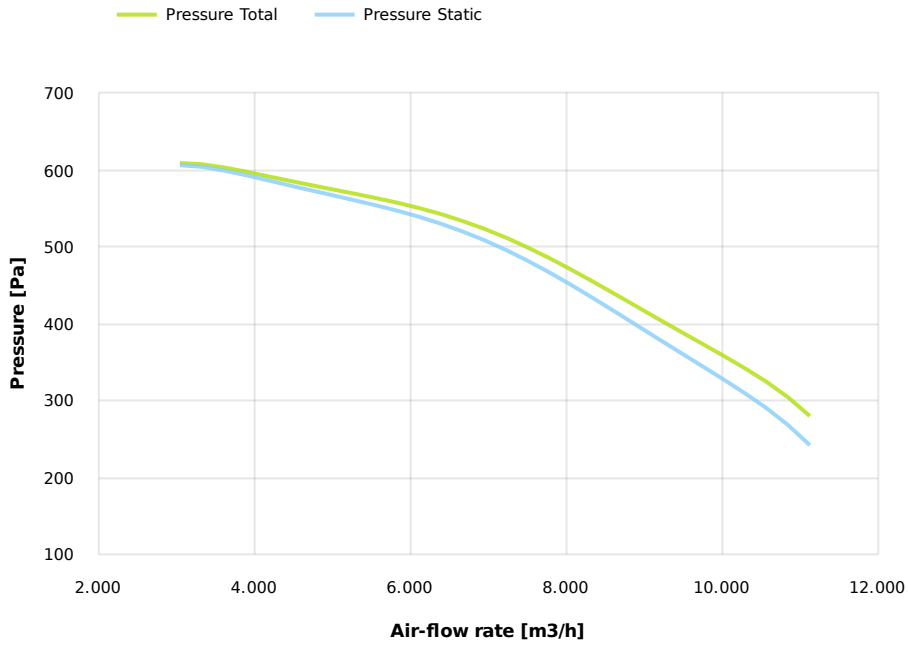
- Pe moulded housing
- PP impeller
- epoxy painted motor support
- stainless steel screw

Table engines

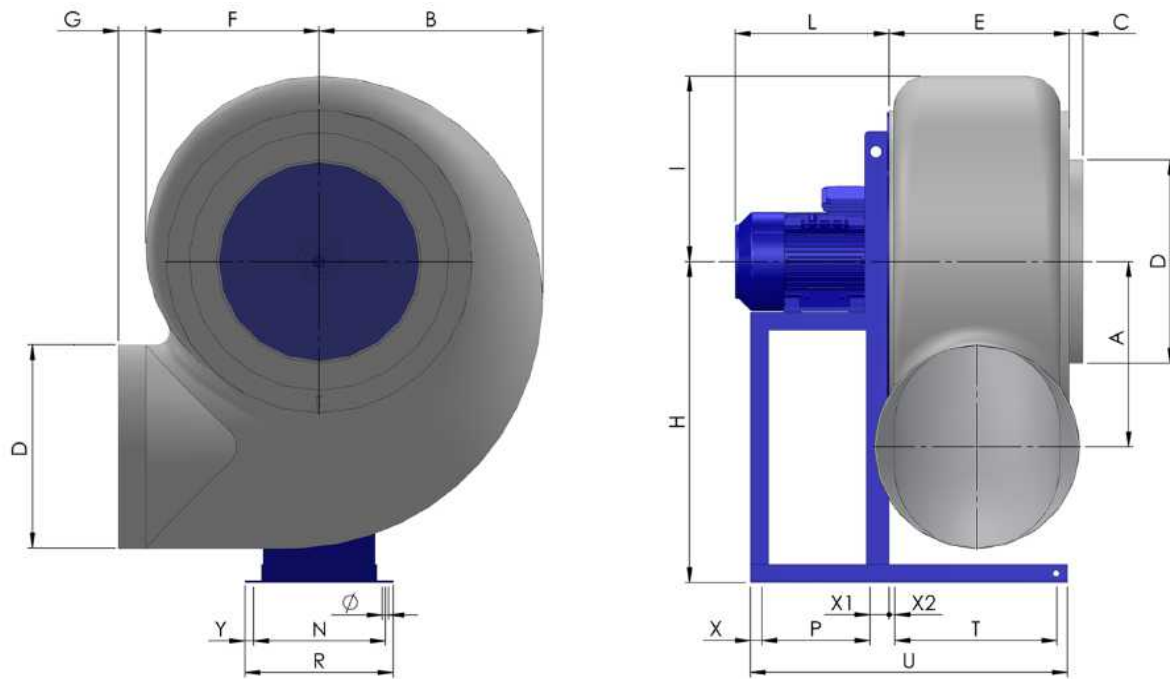
| Class IE | IE1 | IE2 | IE3 |
|------------|------|-------|-------|
| Size | 112M | 112M | 112M |
| Power[kW] | 2.2 | 2.2 | 2.2 |
| Current[A] | 5.43 | 5.18 | 5.3 |
| Voltage[V] | 400 | 400 | 400 |
| Cos φ | 0.76 | 0.75 | 0.72 |
| n | 0.77 | 0.818 | 0.843 |

Options:

- PP Housing
- INOX/Fe+ebonite impeller
- INOX motor support
- labyrinth seal
- flexible connection PVC
- exhaust cap with grid PP/PVC
- drain plug PP
- motor protection cover
- housing splinter protection PVC
- protection grid INOX
- vibration dampers
- deflector cowl PP/PVC
- gravity damper PP/PVC
- adjustable damper
- silencer PP/PVC



Dimensions



| A | B | C | D | E | F | G | H | I | L | N | Ø | P | R |
|-----|-----|----|-----|-----|-----|----|-----|-----|-----|-----|----|-----|-----|
| 445 | 610 | 50 | 500 | 415 | 420 | 80 | 800 | 505 | 340 | 337 | 14 | 270 | 373 |
| T | U | | X | X1 | X2 | Y | | | | | | | |
| 400 | 773 | | 25 | 40 | 15 | 18 | | | | | | | |

Configurations & cad

