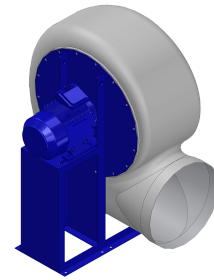


## Research Data

Air-flow rate[m <sup>3</sup> /h]	4425
Pressure[Pa]	421.9
Pressure type	Psta
Power supply	all
Density[m <sup>3</sup> /h]	1.205



## Label

Code	KR 566 M
Voltage[V]	400
Phases	3
Current[A]	
Poles	6
Weight[kg]	87
Frequency[Hz]	50
Speed[rpm]	950
Power[kW]	1.1
IP	55
INS	

## Execution:

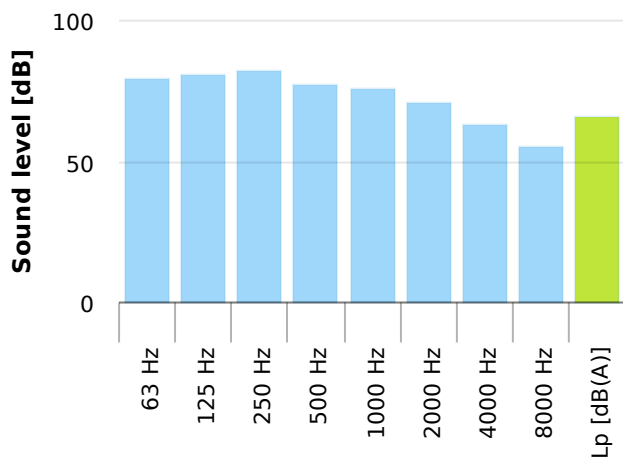
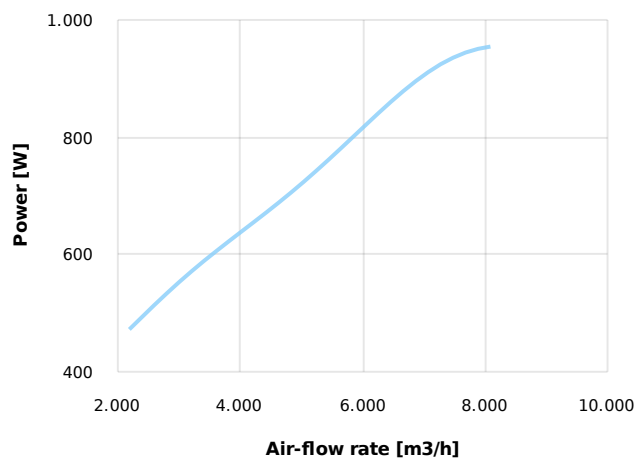
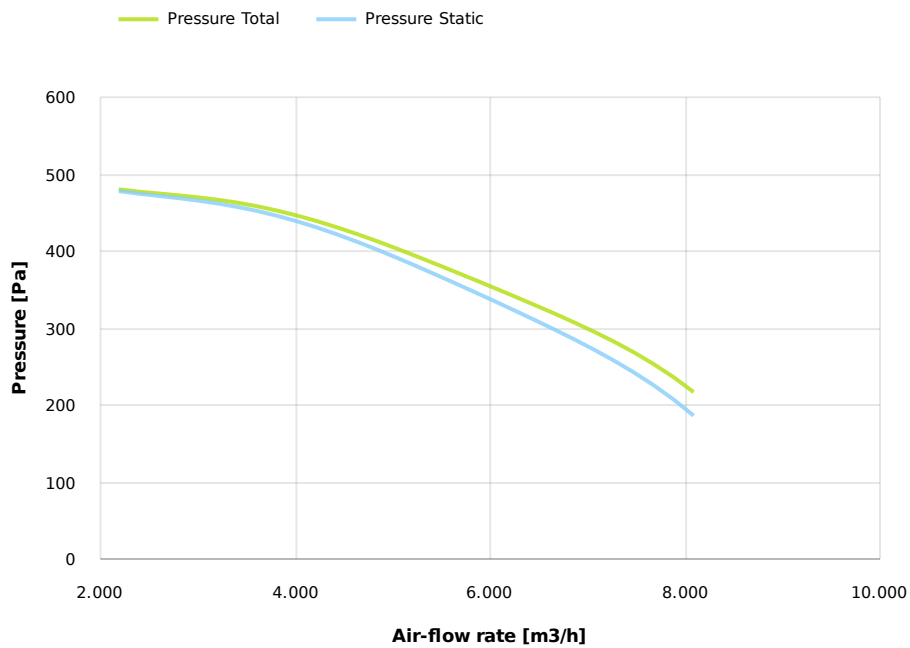
- Pe moulded housing
- PP impeller
- epoxy painted motor support
- stainless steel screw

## Table engines

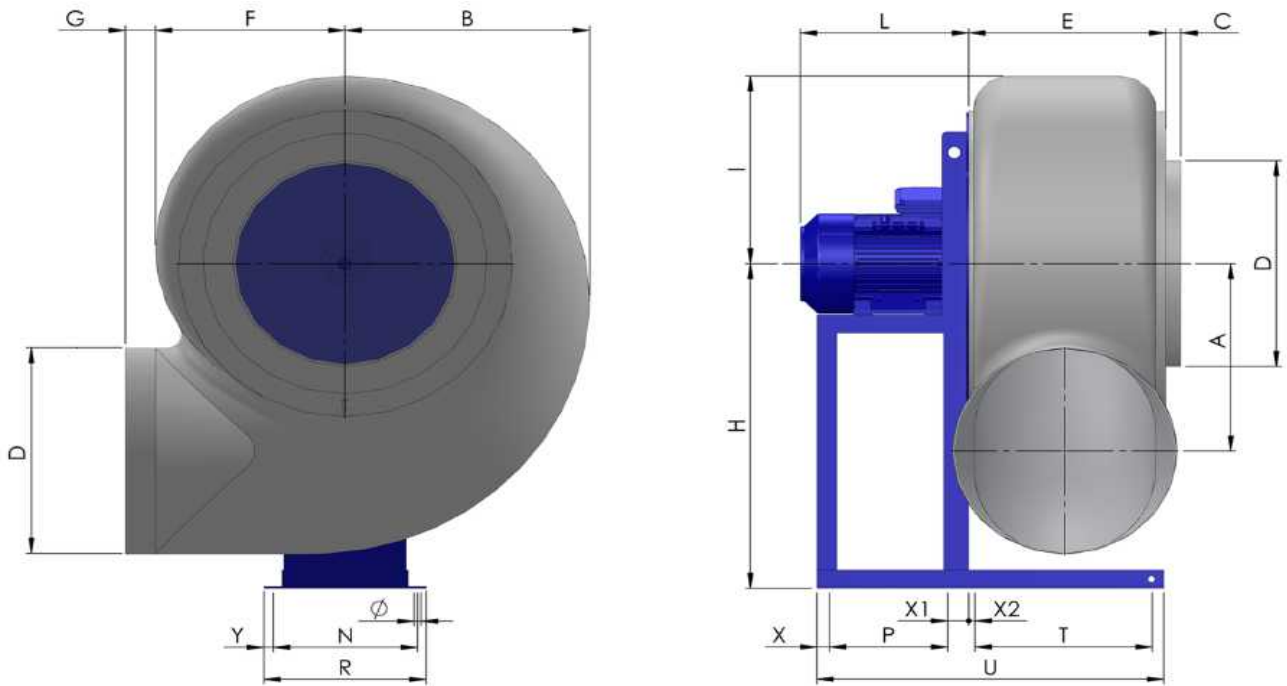
Class IE	IE1	IE2	IE3
Size	90L	90L	90L
Power[kW]	1.1	1.1	1.1
Current[A]	3.02	2.95	2.9
Voltage[V]	400	400	400
Cos φ	0.73	0.69	0.67
n	0.72	0.784	0.81

## Options:

- PP Housing
- INOX/Fe+ebonite impeller
- INOX motor support
- labyrinth seal
- flexible connection PVC
- exhaust cap with grid PP/PVC
- drain plug PP
- motor protection cover
- housing splinter protection PVC
- protection grid INOX
- vibration dampers
- deflector cowl PP/PVC
- gravity damper PP/PVC
- adjustable damper
- silencer PP/PVC



## Dimensions



A	B	C	D	E	F	G	H	I	L	N	Ø	P	R
410	490	50	450	365	380	80	710	410	330	289	14	237	325
T	U		X	X1	X2	Y							
355	695		25	40	15	18							

## Configurations & cad

