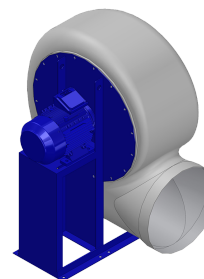


Research Data

Air-flow rate[m ³ /h]	3013
Pressure[Pa]	341
Pressure type	Psta
Power supply	all
Density[m ³ /h]	1.205



Label

Code	KR 506 M
Voltage[V]	400
Phases	3
Current[A]	
Poles	6
Weight[kg]	62
Frequency[Hz]	50
Speed[rpm]	950
Power[kW]	0.55
IP	55
INS	

Execution:

- Pe moulded housing
- PP impeller
- epoxy painted motor support
- stainless steel screw

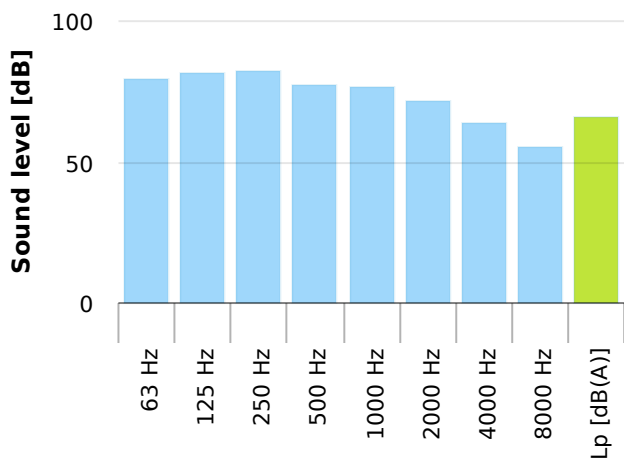
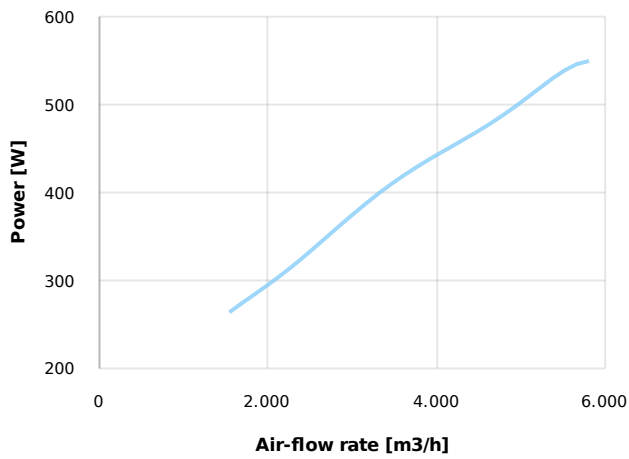
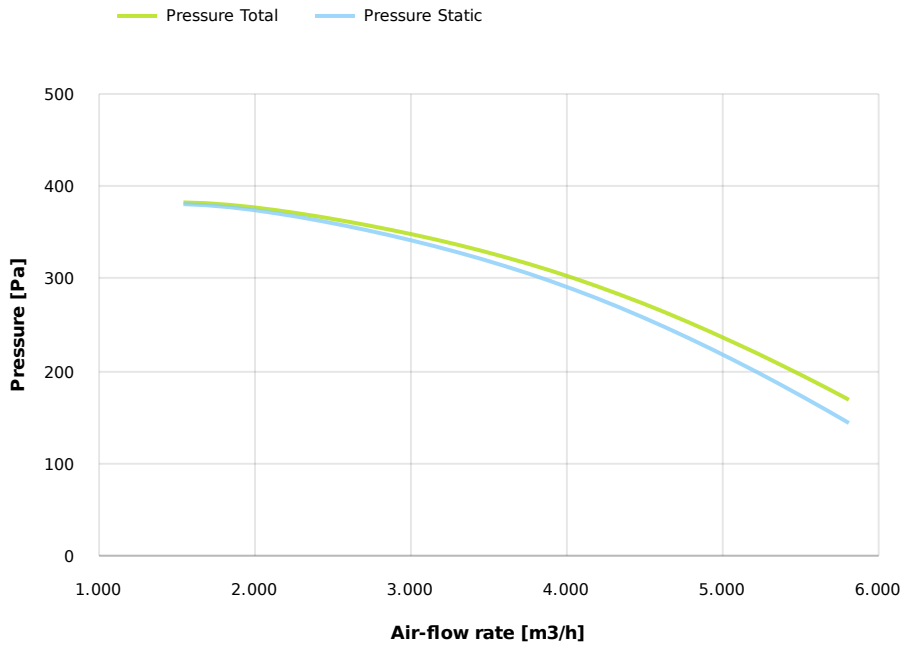
Table engines

Class IE	IE1
Size	80
Power[kW]	0.55
Current[A]	1.65
Voltage[V]	400
Cos φ	0.72
n	0.67

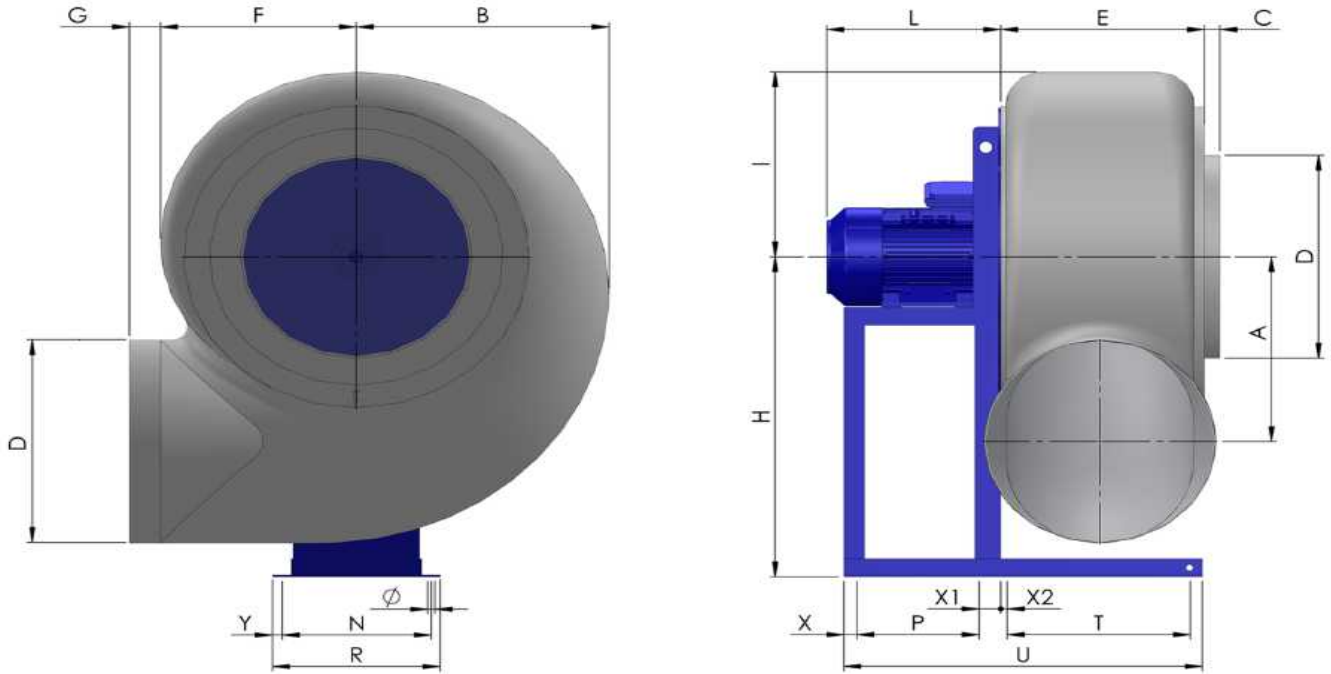
Options:

- PP Housing
- INOX/Fe+ebonite impeller
- INOX motor support
- labyrinth seal
- flexible connection PVC
- exhaust cap with grid PP/PVC
- drain plug PP
- motor protection cover
- housing splinter protection PVC
- protection grid INOX
- vibration dampers
- deflector cowl PP/PVC
- gravity damper PP/PVC
- adjustable damper
- silencer PP/PVC

M506 U



Dimensions



A	B	C	D	E	F	G	H	I	L	N	Ø	P	R
360	460	50	400	355	355	80	630	395	250	289	14	197	325
T	U		X	X1	X2	Y							
335	635		25	30	15	18							

Configurations & cad

