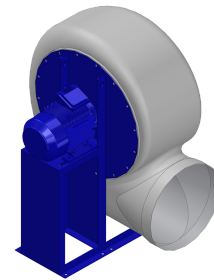


## Research Data

Air-flow rate[m <sup>3</sup> /h]	4598
Pressure[Pa]	794.6
Pressure type	Psta
Power supply	all
Density[m <sup>3</sup> /h]	1.205



## Label

Code	KR 504 M
Voltage[V]	400
Phases	3
Current[A]	
Poles	4
Weight[kg]	70
Frequency[Hz]	50
Speed[rpm]	1450
Power[kW]	2.2
IP	55
INS	

## Execution:

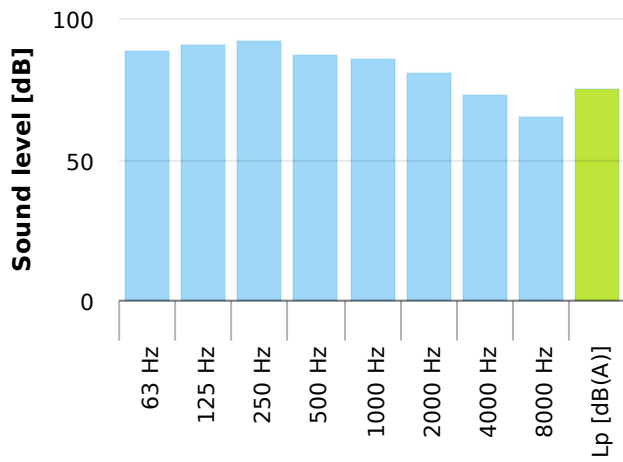
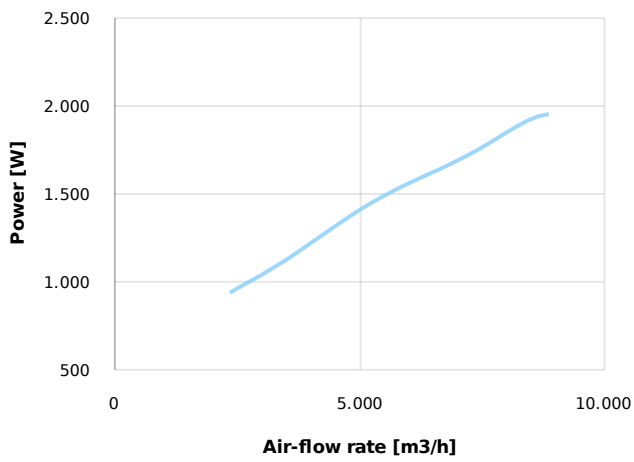
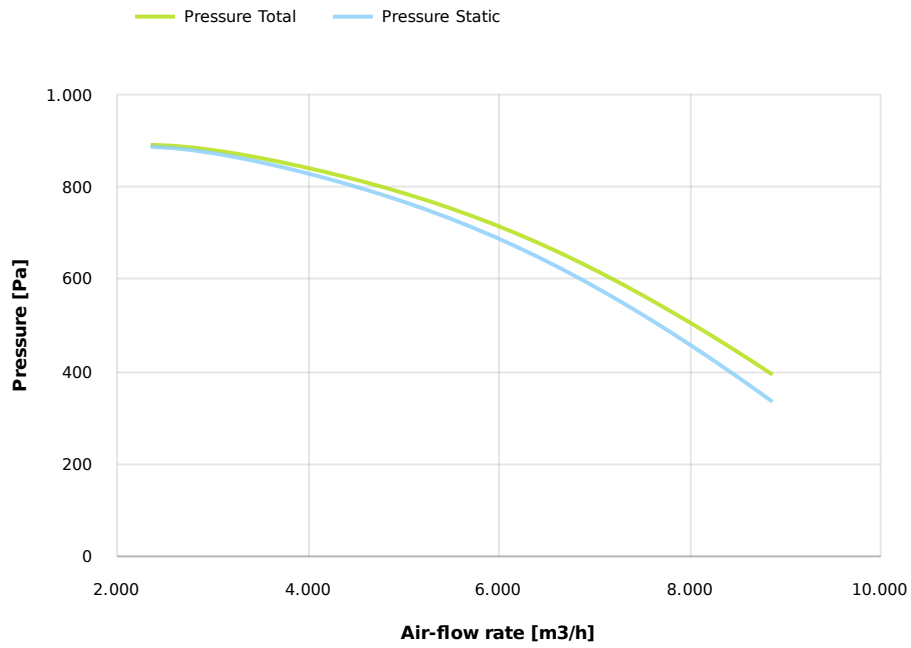
- Pe moulded housing
- PP impeller
- epoxy painted motor support
- stainless steel screw

## Table engines

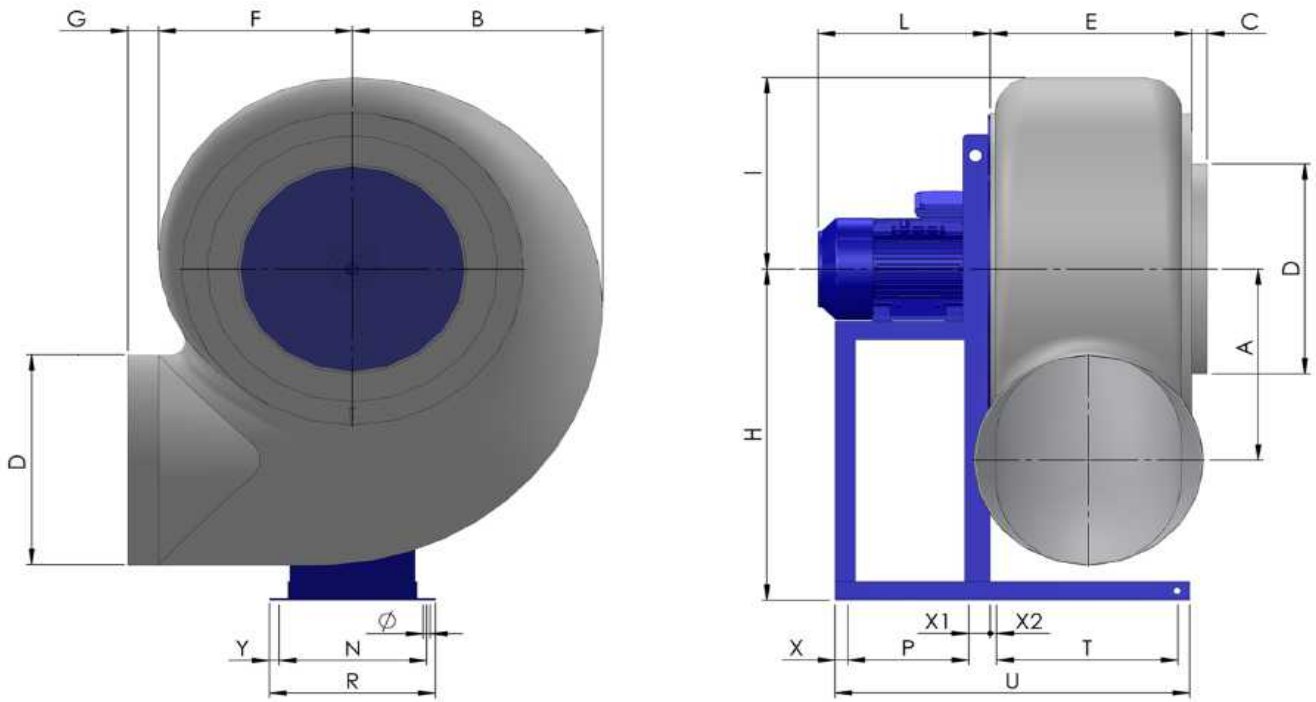
Class IE	IE1	IE2	IE3
Size	100L	100L	100L
Power[kW]	2.2	2.2	2.2
Current[A]	4.84	4.89	4.5
Voltage[V]	400	400	400
Cos φ	0.81	0.77	0.82
n	0.81	0.843	0.867

## Options:

- PP Housing
- INOX/Fe+ebonite impeller
- INOX motor support
- labyrinth seal
- flexible connection PVC
- exhaust cap with grid PP/PVC
- drain plug PP
- motor protection cover
- housing splinter protection PVC
- protection grid INOX
- vibration dampers
- deflector cowl PP/PVC
- gravity damper PP/PVC
- adjustable damper
- silencer PP/PVC



## Dimensions



A	B	C	D	E	F	G	H	I	L	N	Ø	P	R
360	460	50	400	355	355	80	630	395	300	289	14	197	325
T	U	X	X1	X2	Y								
335	635	25	30	15	18								

## Configurations & cad

