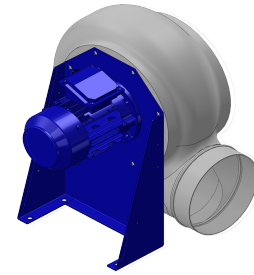


## Research Data

Air-flow rate[m <sup>3</sup> /h]	1432
Pressure[Pa]	1026
Pressure type	Psta
Power supply	all
Density[m <sup>3</sup> /h]	1.205



## Label

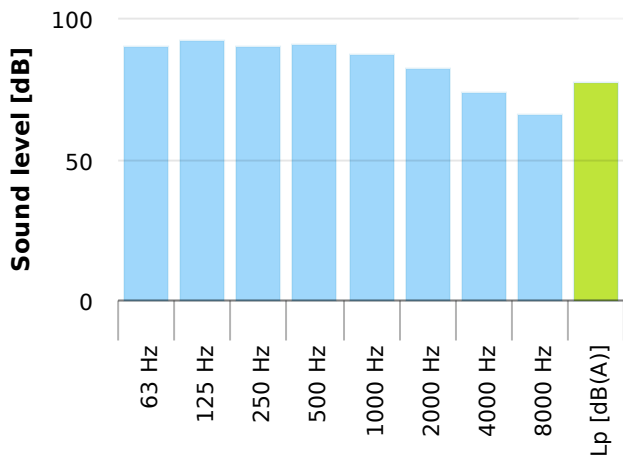
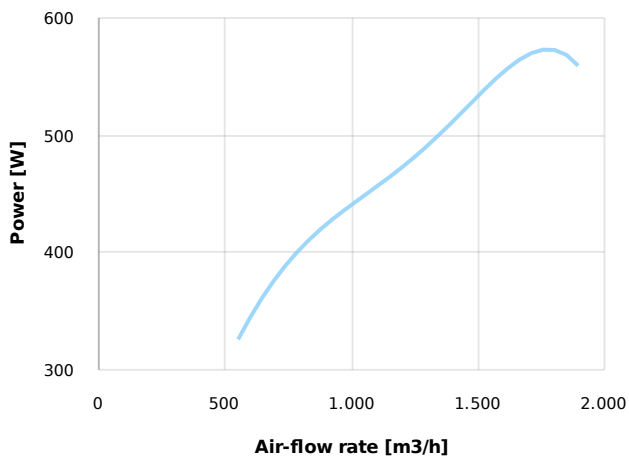
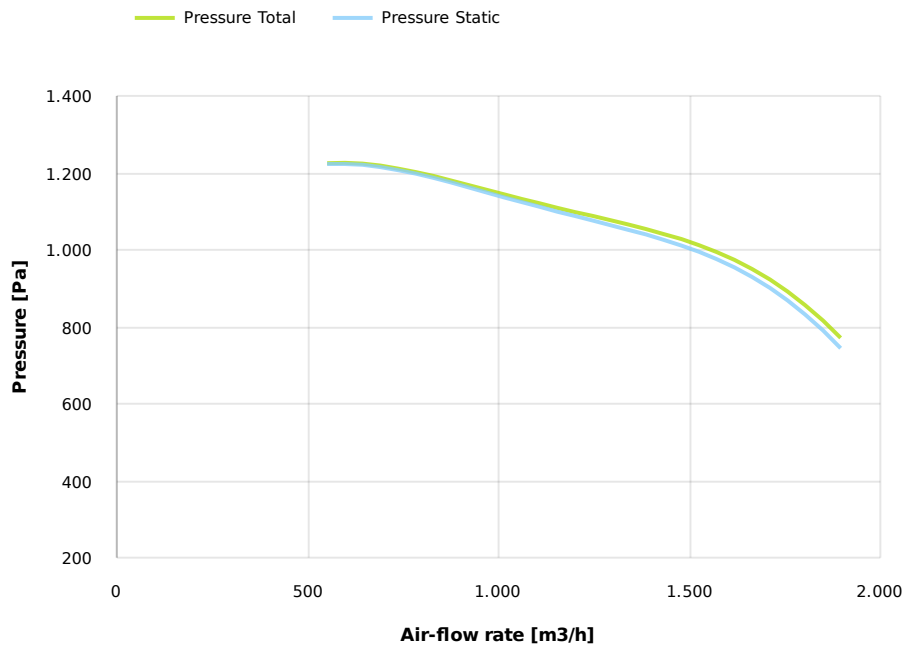
Code	KQ 282 M
Voltage[V]	400
Phases	3
Current[A]	
Poles	2
Weight[kg]	20
Frequency[Hz]	50
Speed[rpm]	2850
Power[kW]	0.55
IP	55
INS	

## Table engines

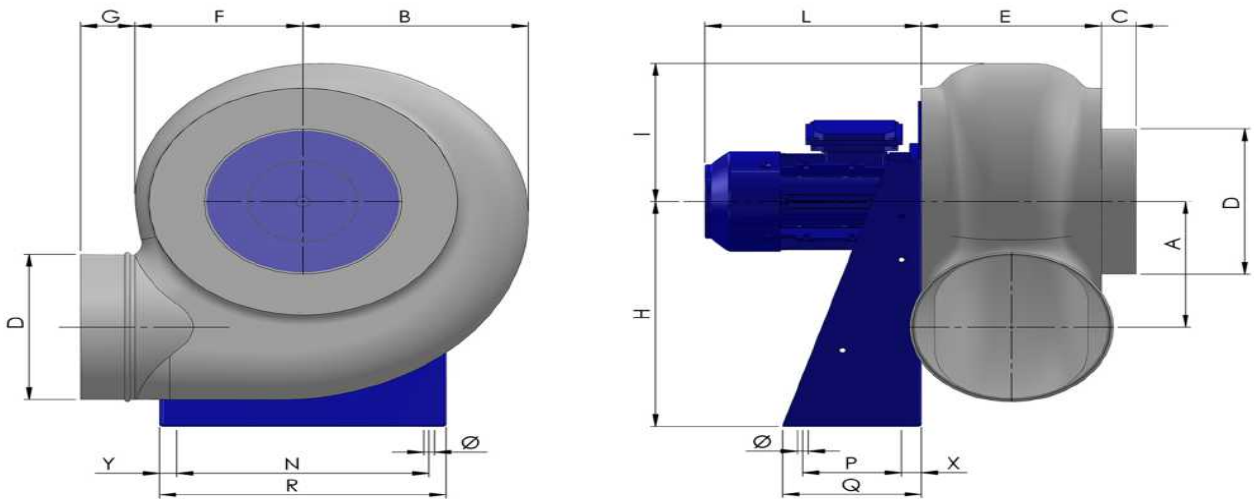
Class IE	IE1
Size	71
Power[kW]	0.55
Current[A]	1.42
Voltage[V]	400
Cos φ	0.79
n	0.71

## Options:

- PP Housing
- INOX/Fe+ebonite impeller
- INOX motor support
- labyrinth seal
- flexible connection PVC
- exhaust cap with grid PP/PVC
- drain plug PP
- motor protection cover
- housing splinter protection PVC
- protection grid INOX
- vibration dampers
- deflector cowl PP/PVC
- gravity damper PP/PVC
- adjustable damper
- silencer PP/PVC



## Dimensions



A	B	C	D	E	F	G	H	I	L	N	Ø	P	Q
208	255	40	225	195	190	70	350	210	220	280	11	120	190
<b>R</b>				<b>X</b>				<b>Y</b>					
316				35				18					

## Configurations & cad

