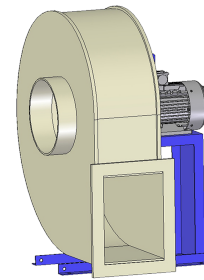


## Research Data

Air-flow rate[m <sup>3</sup> /h]	4112
Pressure[Pa]	501.9
Pressure type	Psta
Power supply	all
Density[m <sup>3</sup> /h]	1.205



PP welded housing - PP/INOX impeller - epoxy painted motor support - stainless steel screws

## Label

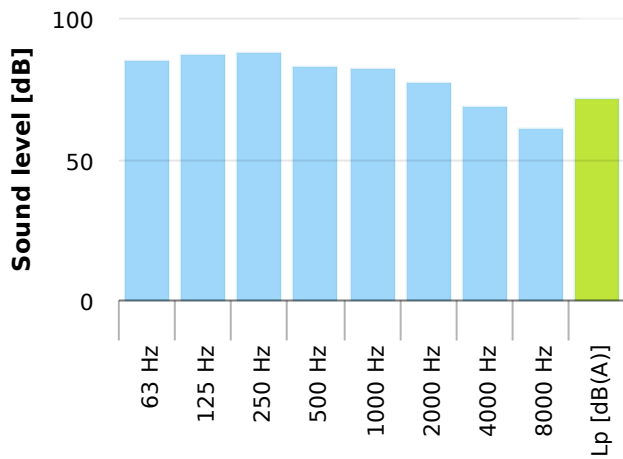
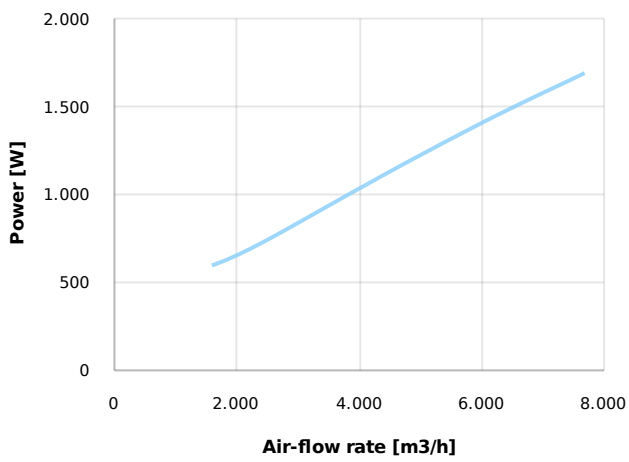
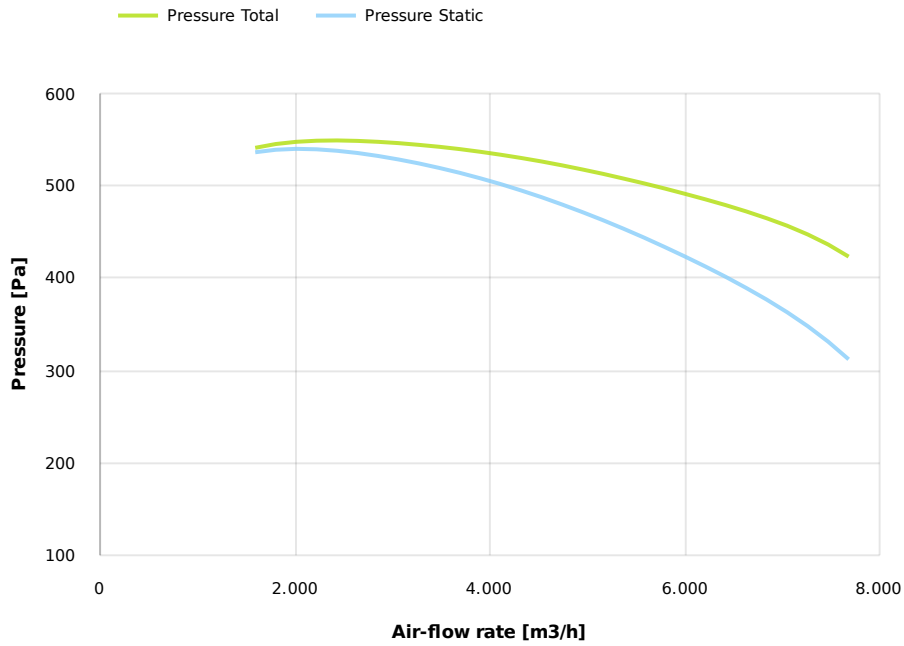
Code	KC 636 W
Voltage[V]	400
Phases	3
Current[A]	
Poles	6
Weight[kg]	110
Frequency[Hz]	50
Speed[rpm]	900
Power[kW]	3
IP	55
INS	

## Table engines

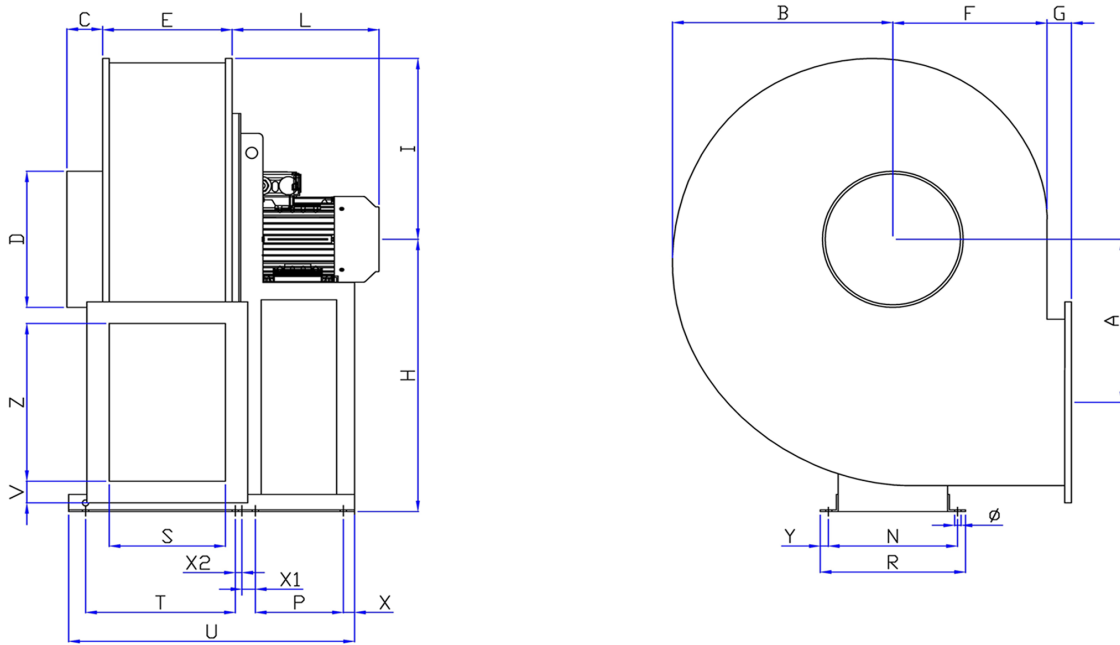
Class IE	IE1	IE2	IE3
Size	132S	132S	132S
Power[kW]	3	3	3
Current[A]	6.9	6.84	6.9
Voltage[V]	400	400	400
Cos φ	0.76	0.76	0.74
n	0.79	0.833	0.856

## Options:

- PP Housing
- INOX/Fe+ebonite impeller
- INOX motor support
- labyrinth seal
- flexible connection PVC
- exhaust cap with grid PP/PVC
- drain plug PP
- motor protection cover
- housing splinter protection PVC
- protection grid INOX
- vibration dampers
- deflector cowl PP/PVC
- gravity damper PP/PVC
- adjustable damper
- silencer PP/PVC



## Dimensions



A	B	C	D	E	F	G	H	I	L	N	Ø	P	R
406	573	80	450	350	418	50	800	492	340	337	14	270	373
S	T	U	V	X	X1	X2	Y	Z					
330	400	773	50	25	40	15	18	480					

## Configurations & cad

