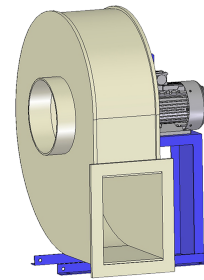


Research Data

Air-flow rate[m ³ /h]	6625
Pressure[Pa]	1302
Pressure type	Psta
Power supply	all
Density[m ³ /h]	1.205



PP welded housing - PP/INOX impeller - epoxy painted motor support - stainless steel screws

Label

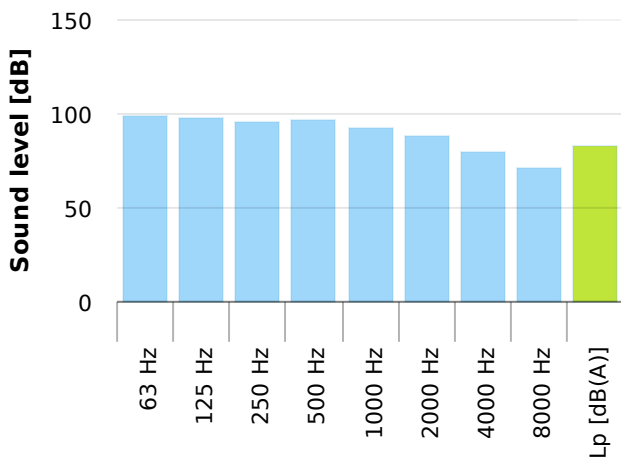
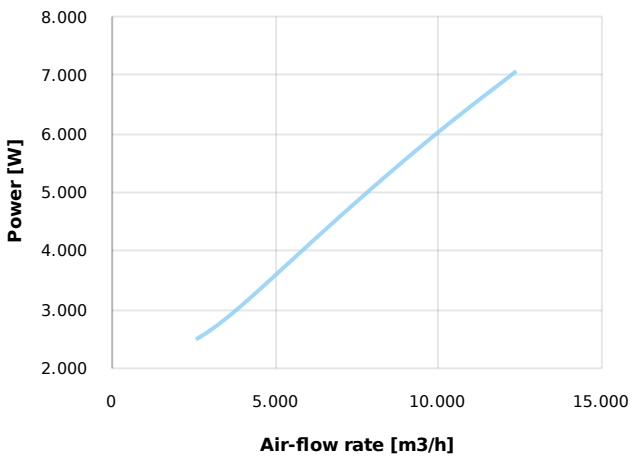
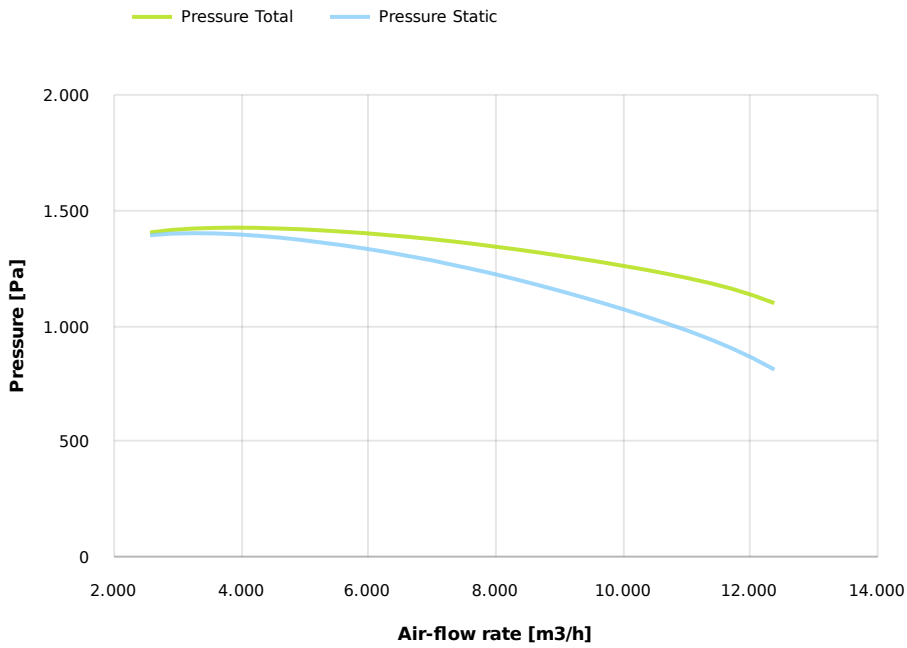
Code	KC 634 W
Voltage[V]	400
Phases	3
Current[A]	
Poles	4
Weight[kg]	112
Frequency[Hz]	50
Speed[rpm]	1450
Power[kW]	7.5
IP	55
INS	

Table engines

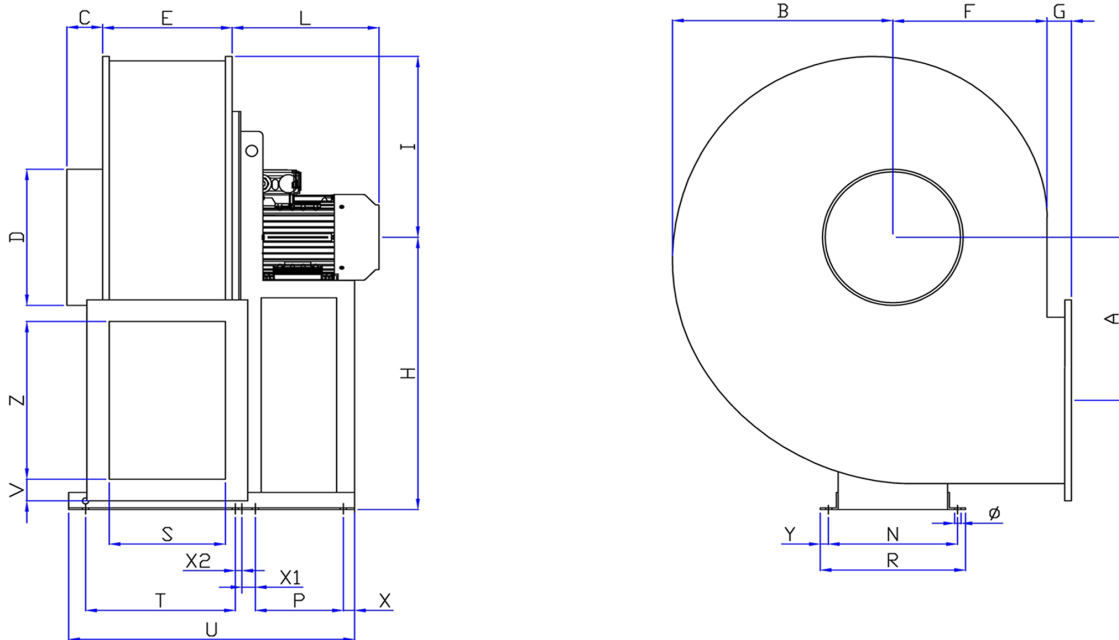
Class IE	IE1	IE2	IE3
Size	132M	132M	132M
Power[kW]	7.5	7.5	7.5
Current[A]	14.64	14.5	14.1
Voltage[V]	400	400	400
Cos φ	0.85	0.84	0.85
n	0.87	0.887	0.904

Options:

- PP Housing
- INOX/Fe+ebonite impeller
- INOX motor support
- labyrinth seal
- flexible connection PVC
- exhaust cap with grid PP/PVC
- drain plug PP
- motor protection cover
- housing splinter protection PVC
- protection grid INOX
- vibration dampers
- deflector cowl PP/PVC
- gravity damper PP/PVC
- adjustable damper
- silencer PP/PVC



Dimensions



A	B	C	D	E	F	G	H	I	L	N	Ø	P	R
406	573	80	450	350	418	50	800	492	420	337	14	270	373
S	T	U	V	X	X1	X2	Y	Z					
330	400	773	50	25	40	15	18	480					

Configurations & cad

