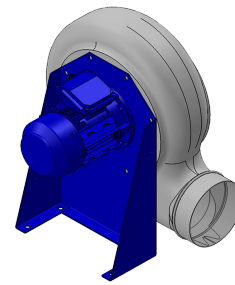


Research Data

Air-flow rate[m ³ /h]	375
Pressure[Pa]	519.1
Pressure type	Psta
Power supply	all
Density[m ³ /h]	1.205



Pe moulded housing - PP impeller - Epoxy painted motor support - Stainless steel screws

Label

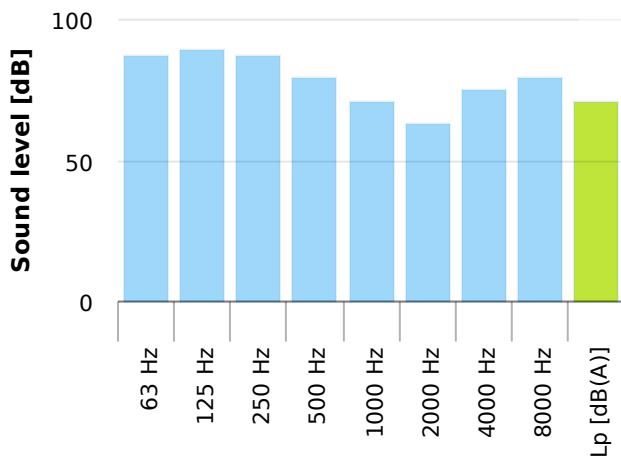
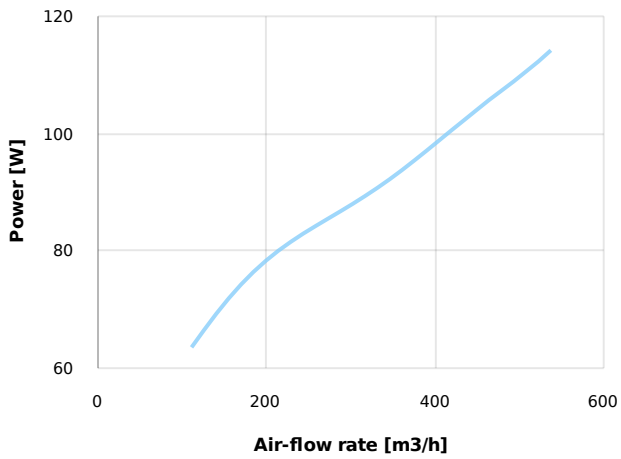
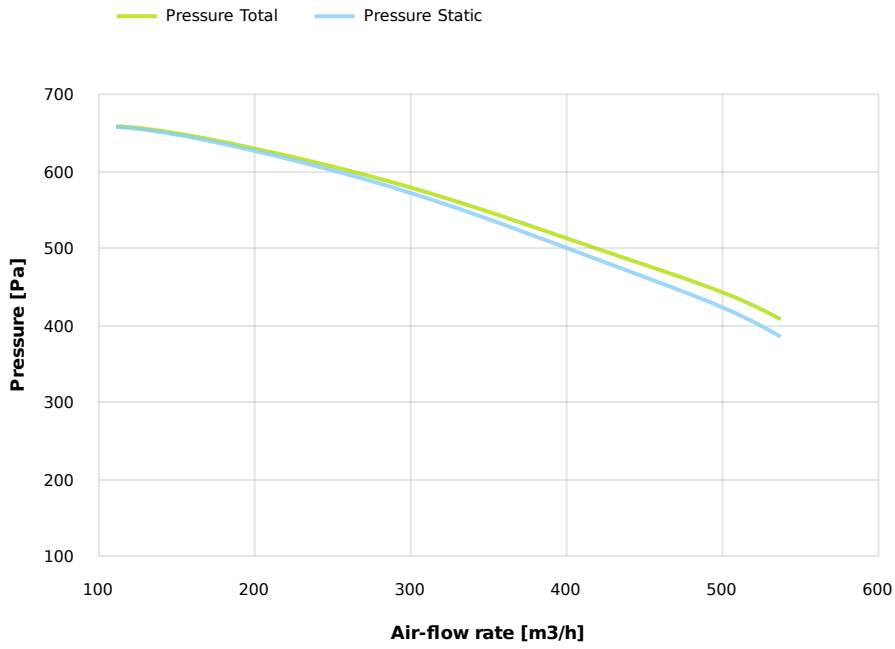
Code	KC202 M
Voltage[V]	400
Phases	3
Current[A]	
Poles	2
Weight[kg]	9
Frequency[Hz]	50
Speed[rpm]	2850
Power[kW]	0.25
IP	55
INS	

Table engines

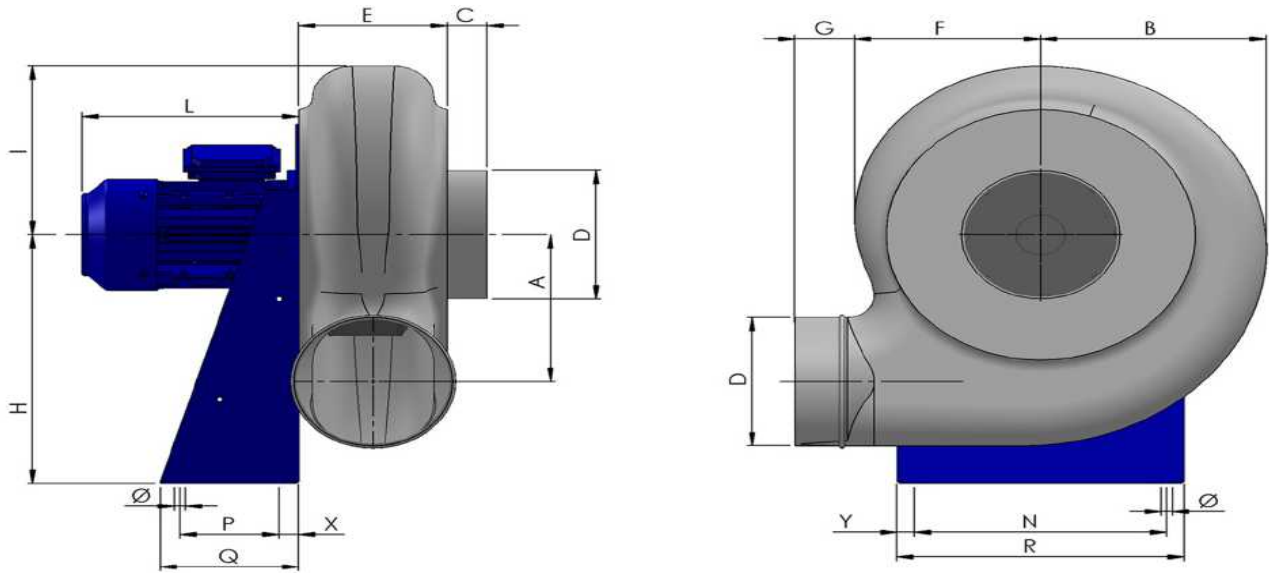
Class IE	IE1
Size	63
Power[kW]	0.25
Current[A]	0.71
Voltage[V]	400
Cos φ	0.78
n	0.65

Options:

- PP Housing
- INOX/Fe+ebonite impeller
- INOX motor support
- labyrinth seal
- flexible connection PVC
- exhaust cap with grid PP/PVC
- drain plug PP
- motor protection cover
- housing splinter protection PVC
- protection grid INOX
- vibration dampers
- deflector cowl PP/PVC
- gravity damper PP/PVC
- adjustable damper
- silencer PP/PVC



Dimensions



A	B	C	D	E	F	G	H	I	L	N	Ø	P	Q
142	187	40	125	120	150	60	250	165	195	200	11	100	140
		R					X					Y	
		235					20					175	

Configurations & cad

