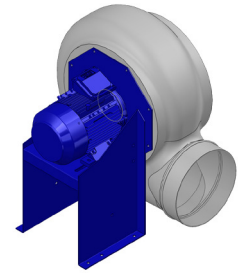


## Research Data

Air-flow rate[m <sup>3</sup> /h]	2096
Pressure[Pa]	229.2
Pressure type	Psta
Power supply	all
Density[m <sup>3</sup> /h]	1.205



## Label

Code	K456
Voltage[V]	400
Phases	3
Current[A]	
Poles	6
Weight[kg]	37
Frequency[Hz]	50
Speed[rpm]	920
Power[kW]	0.37
IP	55
INS	

## Execution:

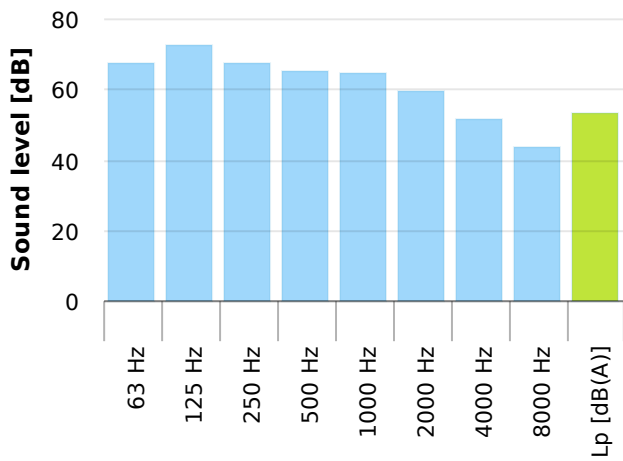
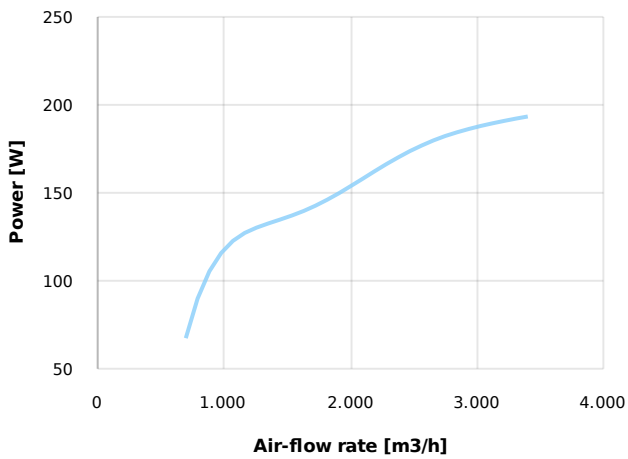
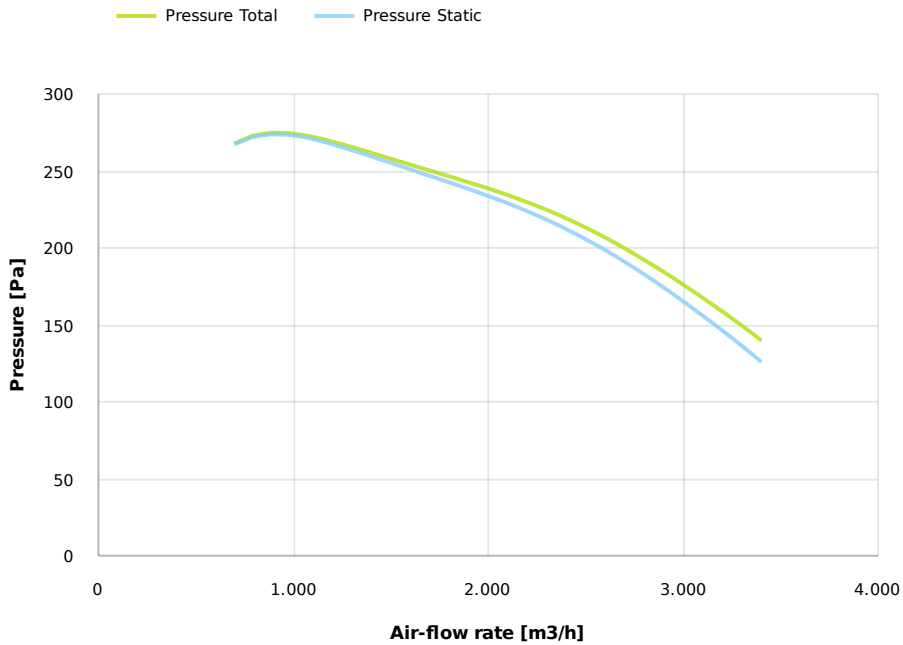
- Pe moulded housing
- PP impeller
- epoxy painted motor support
- stainless steel screw

## Table engines

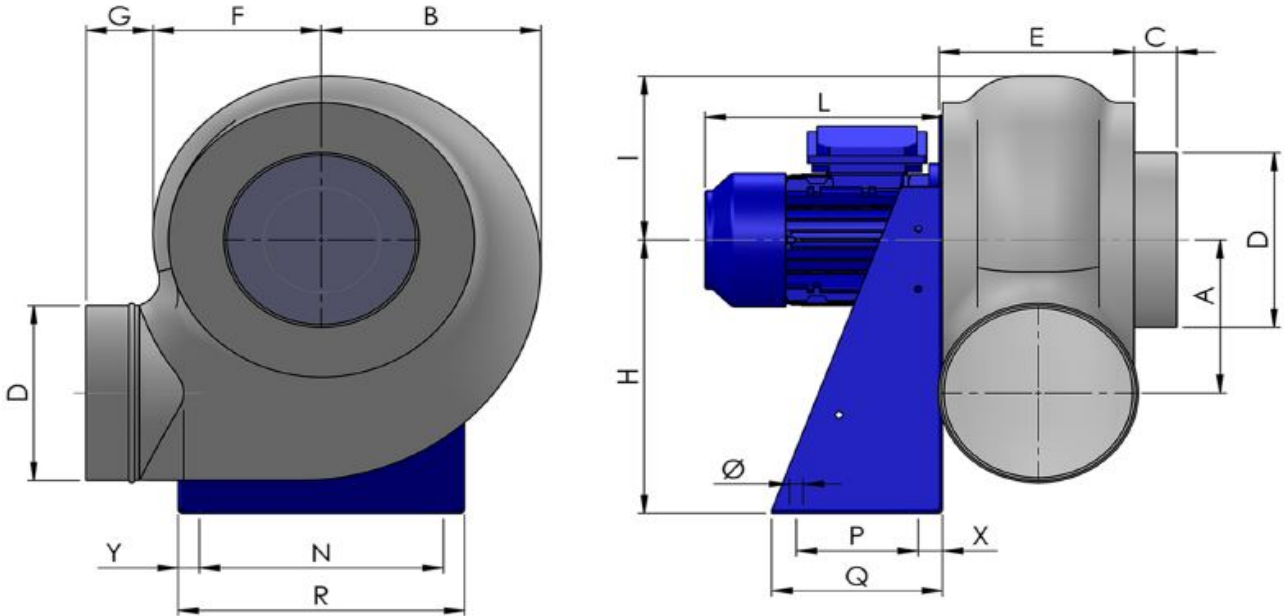
Class IE	IE1
Size	71
Power[kW]	0.37
Current[A]	1.27
Voltage[V]	400
Cos φ	0.67
n	0.61

## Options:

- PP Housing
- INOX/Fe+ebonite impeller
- INOX motor support
- labyrinth seal
- flexible connection PVC
- exhaust cap with grid PP/PVC
- drain plug PP
- motor protection cover
- housing splinter protection PVC
- protection grid INOX
- vibration dampers
- deflector cowl PP/PVC
- gravity damper PP/PVC
- adjustable damper
- silencer PP/PVC



## Dimensions



A	B	C	D	E	F	G	H	I	L	N	Ø	P	Q
324	400	40	355	287	295	55	550	330	240	370	11	170	250
R		X				Y							
410		40				20							

## Configurations & cad

