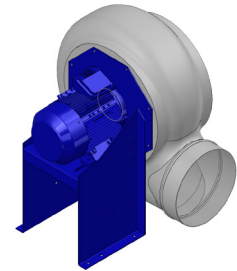


## Research Data

Air-flow rate[m <sup>3</sup> /h]	3149
Pressure[Pa]	543.2
Pressure type	Psta
Power supply	all
Density[m <sup>3</sup> /h]	1.205



## Label

Code	K454
Voltage[V]	400
Phases	3
Current[A]	
Poles	4
Weight[kg]	40
Frequency[Hz]	50
Speed[rpm]	1410
Power[kW]	1.1
IP	55
INS	

## Execution:

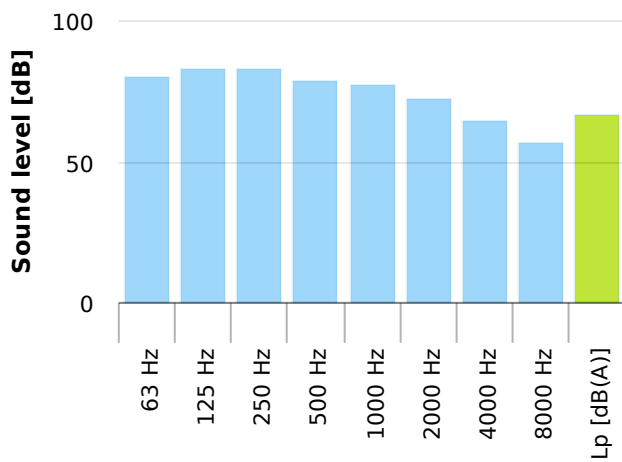
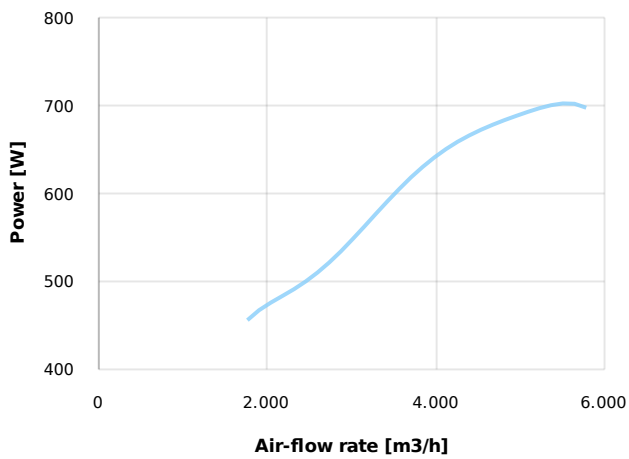
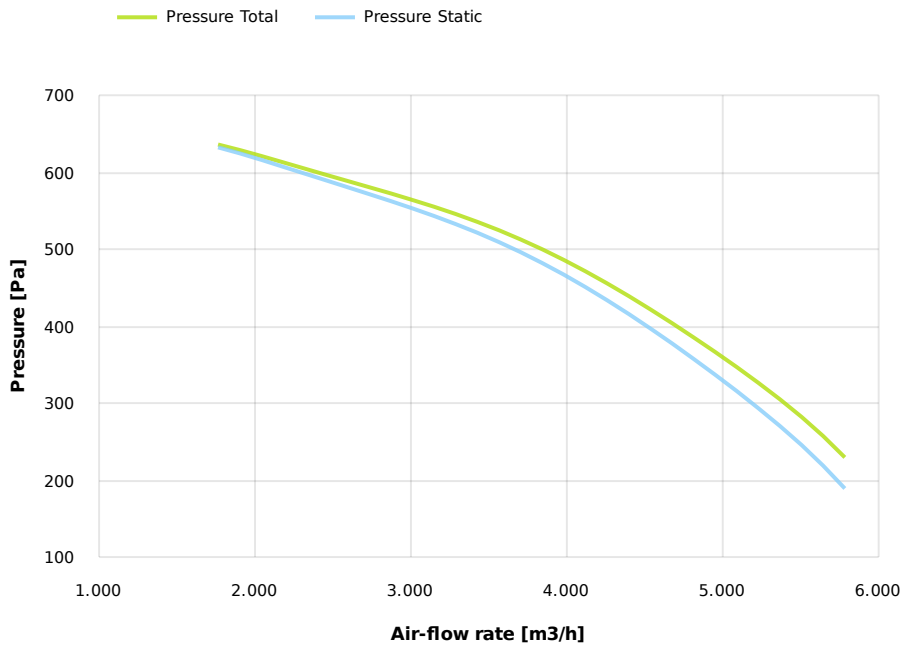
- Pe moulded housing
- PP impeller
- epoxy painted motor support
- stainless steel screw

## Table engines

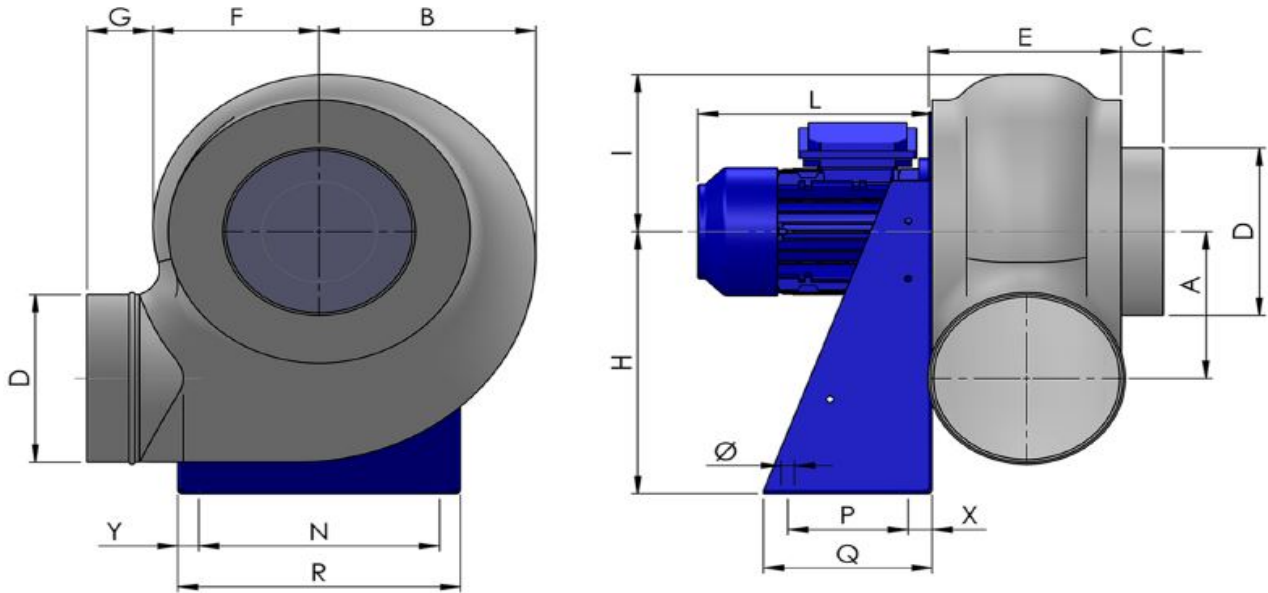
Class IE	IE1	IE2	IE3
Size	90S	90	90S
Power[kW]	1.1	1.1	1.1
Current[A]	2.64	2.75	2.6
Voltage[V]	400	400	400
Cos φ	0.79	0.71	0.72
n	0.762	0.814	0.841

## Options:

- PP Housing
- INOX/Fe+ebonite impeller
- INOX motor support
- labyrinth seal
- flexible connection PVC
- exhaust cap with grid PP/PVC
- drain plug PP
- motor protection cover
- housing splinter protection PVC
- protection grid INOX
- vibration dampers
- deflector cowl PP/PVC
- gravity damper PP/PVC
- adjustable damper
- silencer PP/PVC



## Dimensions



A	B	C	D	E	F	G	H	I	L	N	Ø	P	Q	
324	400	40	355	287	395	55	550	330	290	370	11	170	250	
				R					X					
				410					40					
										Y				
										20				

## Configurations & cad

