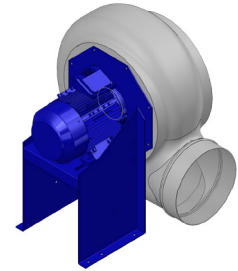


Research Data

Air-flow rate[m ³ /h]	6410
Pressure[Pa]	2250
Pressure type	Psta
Power supply	all
Density[m ³ /h]	1.205



Label

Code	K452
Voltage[V]	400
Phases	3
Current[A]	
Poles	2
Weight[kg]	57
Frequency[Hz]	50
Speed[rpm]	2870
Power[kW]	5.5
IP	55
INS	

Execution:

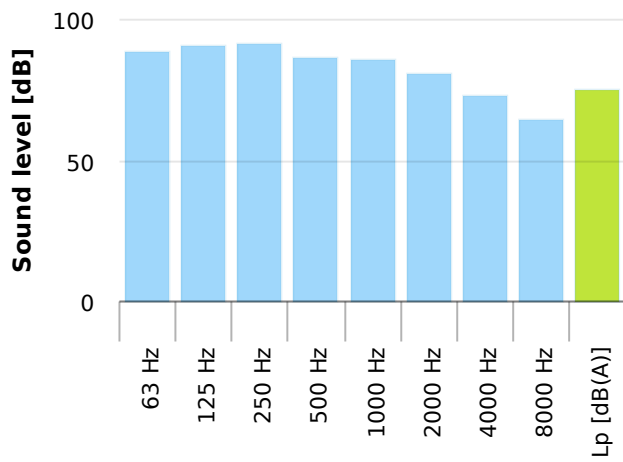
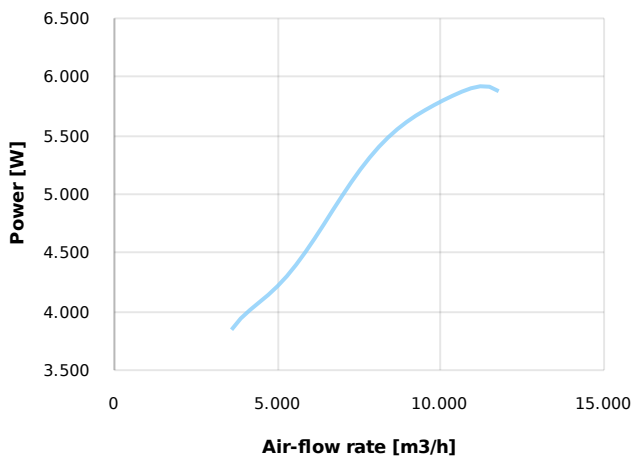
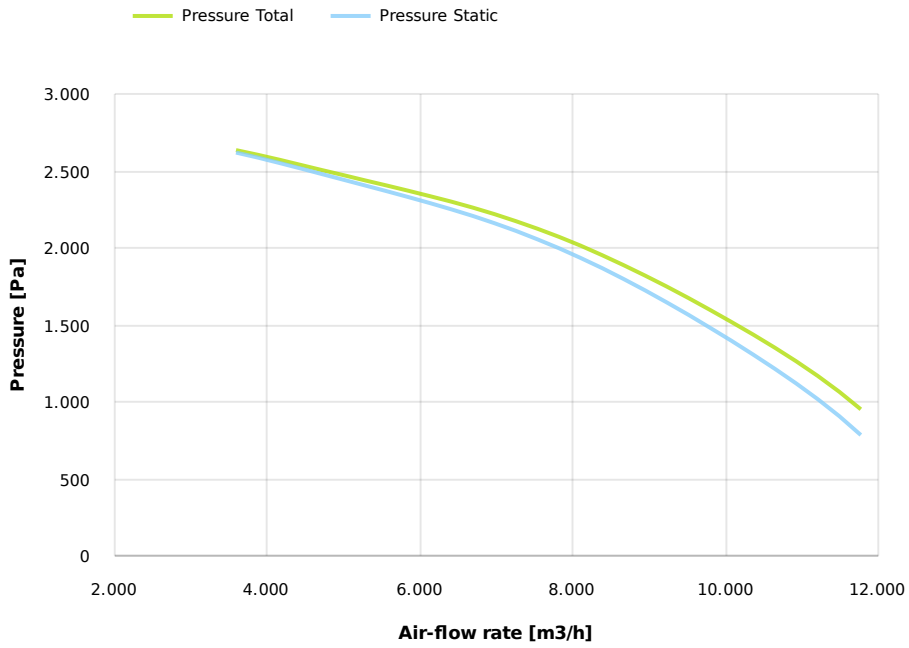
- Pe moulded housing
- PP impeller
- epoxy painted motor support
- stainless steel screw

Table engines

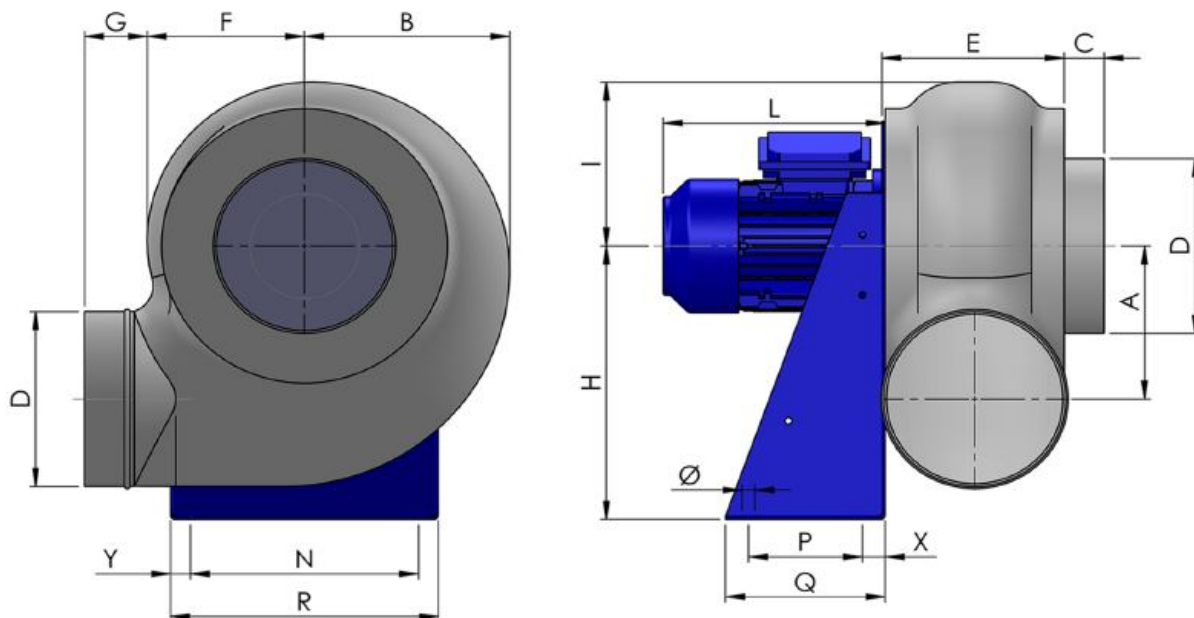
Class IE	IE3
Size	132S
Power[kW]	5.5
Current[A]	10
Voltage[V]	400
Cos	0.89
n	0.892

Options:

- PP Housing
- INOX/Fe+ebonite impeller
- INOX motor support
- labyrinth seal
- flexible connection PVC
- exhaust cap with grid PP/PVC
- drain plug PP
- motor protection cover
- housing splinter protection PVC
- protection grid INOX
- vibration dampers
- deflector cowl PP/PVC
- gravity damper PP/PVC
- adjustable damper
- silencer PP/PVC



Dimensions



A	B	C	D	E	F	G	H	I	L	N	Ø	P	Q
324	400	40	355	287	295	55	550	330	415	370	11	270	340
			R				X					Y	
			410				40					20	

Configurations & cad

