

Research Data

Air-flow rate[m ³ /h]	1679
Pressure[Pa]	175.9
Pressure type	Psta
Power supply	all
Density[m ³ /h]	1.205

Label

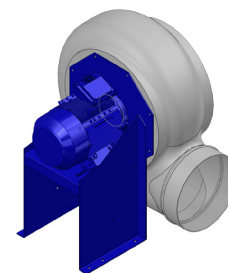
Code	K406
Voltage[V]	400
Phases	3
Current[A]	
Poles	6
Weight[kg]	30
Frequency[Hz]	50
Speed[rpm]	920
Power[kW]	0.25
IP	55
INS	

Table engines

Class IE	IE1
Size	71
Power[kW]	0.25
Current[A]	0.87
Voltage[V]	400
Cos φ	0.7
n	0.59

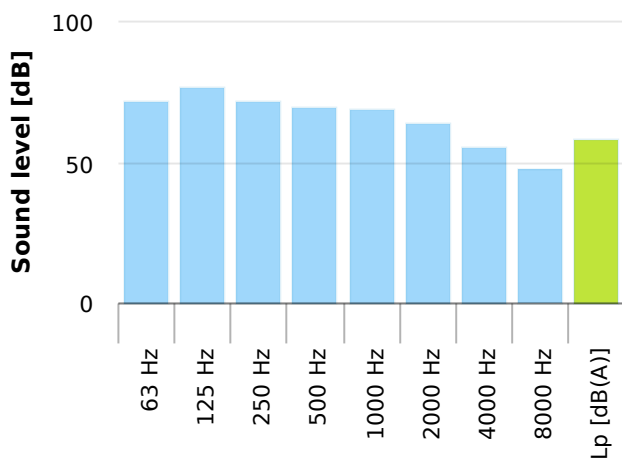
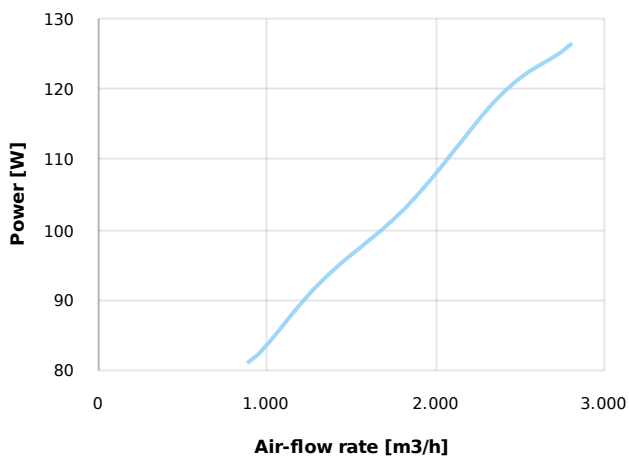
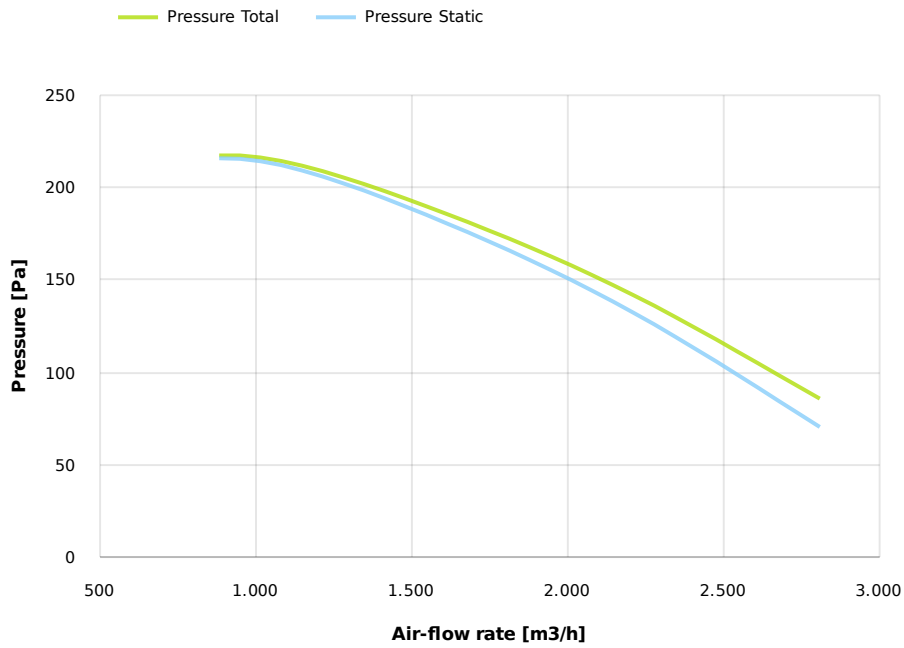
Options:

- PP Housing
- INOX/Fe+ebonite impeller
- INOX motor support
- labyrinth seal
- flexible connection PVC
- exhaust cap with grid PP/PVC
- drain plug PP
- motor protection cover
- housing splinter protection PVC
- protection grid INOX
- vibration dampers
- deflector cowl PP/PVC
- gravity damper PP/PVC
- adjustable damper
- silencer PP/PVC

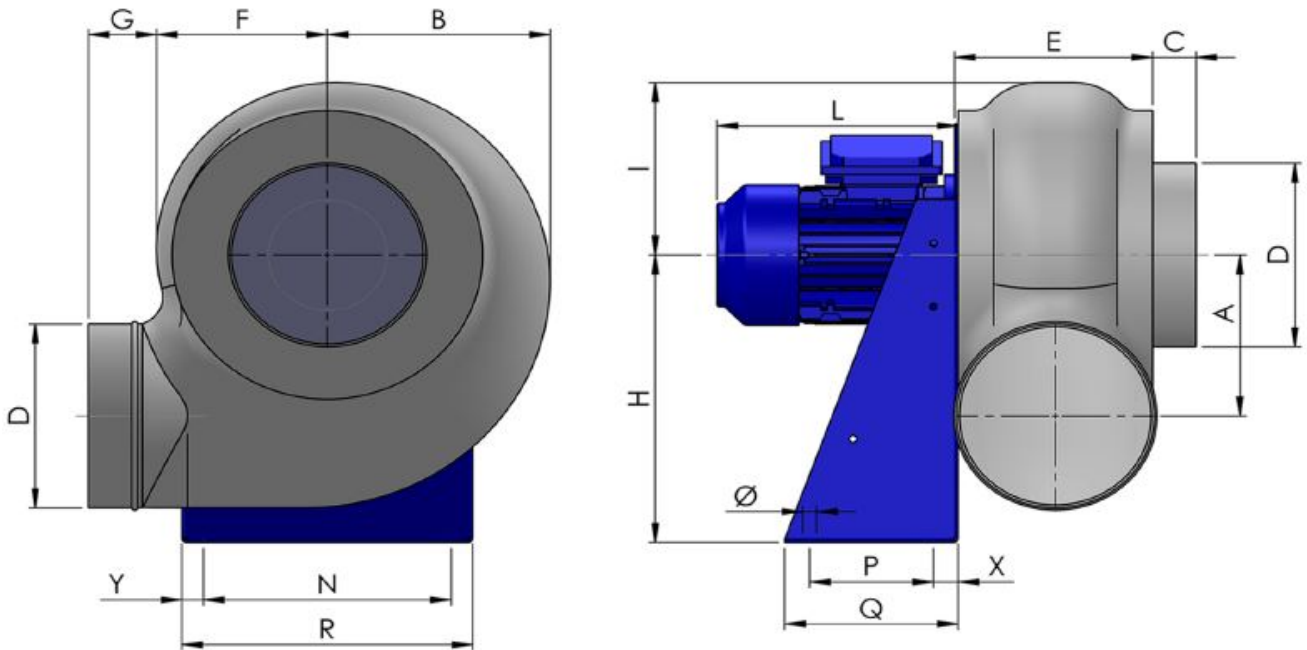


Execution:

- Pe moulded housing
- PP impeller
- epoxy painted motor support
- stainless steel screw



Dimensions



A	B	C	D	E	F	G	H	I	L	N	Ø	P	Q
290	356	40	315	252	264	55	495	295	220	325	11	170	250
R				X				Y					
365				40				20					

Configurations & cad

