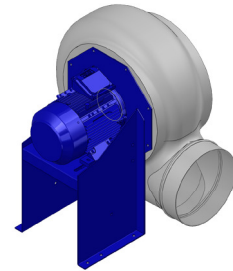


Research Data

Air-flow rate[m ³ /h]	2573
Pressure[Pa]	413.2
Pressure type	Psta
Power supply	all
Density[m ³ /h]	1.205



Label

Code	K404
Voltage[V]	400
Phases	3
Current[A]	
Poles	4
Weight[kg]	33
Frequency[Hz]	50
Speed[rpm]	1410
Power[kW]	0.55
IP	55
INS	

Execution:

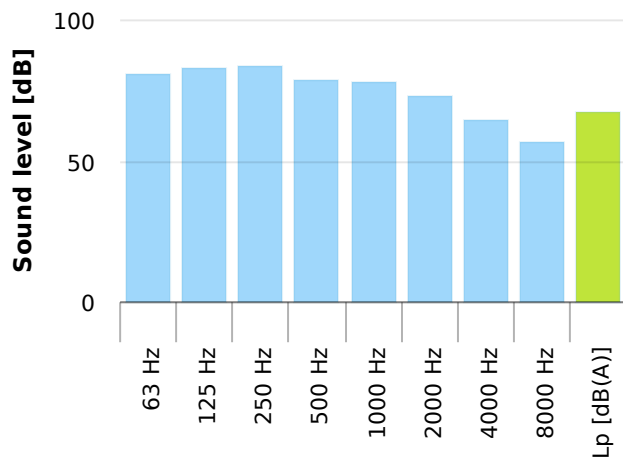
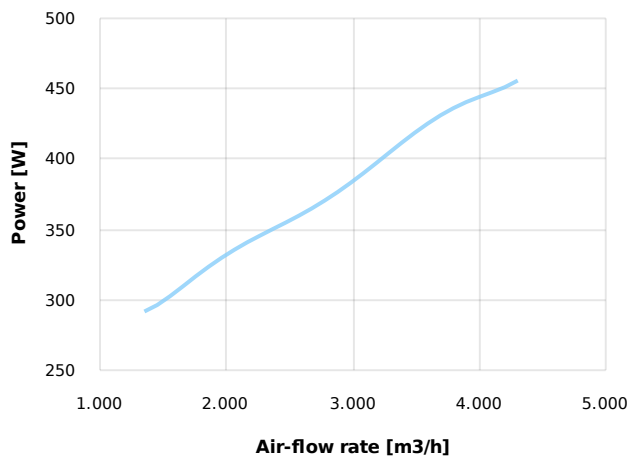
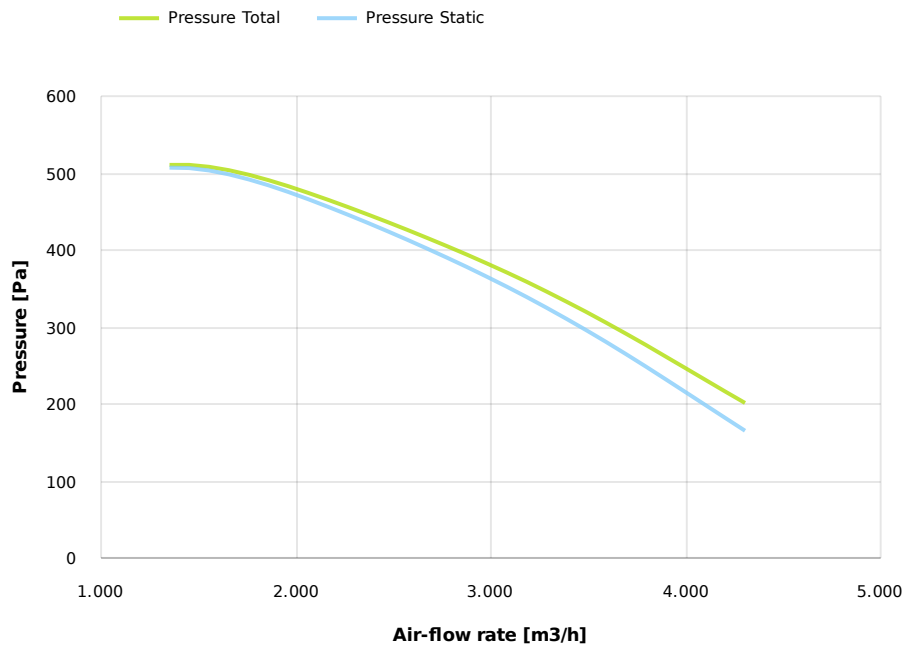
- Pe moulded housing
- PP impeller
- epoxy painted motor support
- stainless steel screw

Table engines

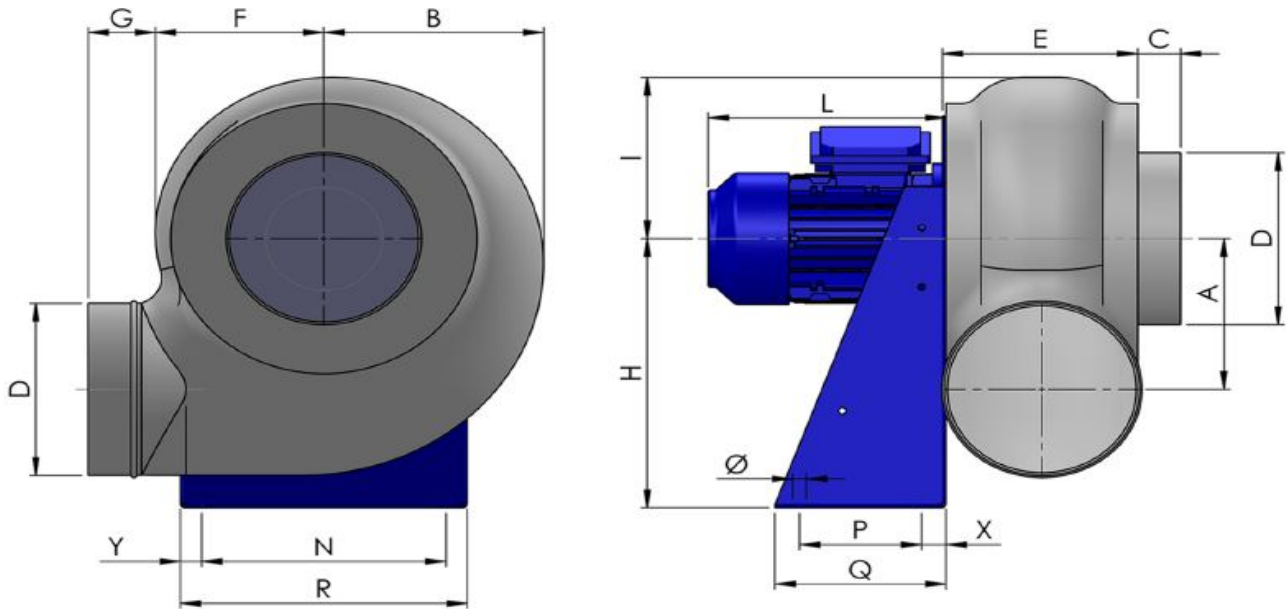
Class IE	IE1
Size	80
Power[kW]	0.55
Current[A]	1.6
Voltage[V]	400
Cos φ	0.75
n	0.66

Options:

- PP Housing
- INOX/Fe+ebonite impeller
- INOX motor support
- labyrinth seal
- flexible connection PVC
- exhaust cap with grid PP/PVC
- drain plug PP
- motor protection cover
- housing splinter protection PVC
- protection grid INOX
- vibration dampers
- deflector cowl PP/PVC
- gravity damper PP/PVC
- adjustable damper
- silencer PP/PVC



Dimensions



A	B	C	D	E	F	G	H	I	L	N	Ø	P	Q
290	356	40	315	252	264	55	495	295	240	325	11	170	250
		R					X						Y
		365					40						20

Configurations & cad

