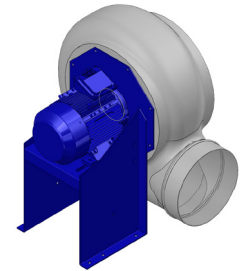


## Research Data

Air-flow rate[m <sup>3</sup> /h]	3435
Pressure[Pa]	1480
Pressure type	Psta
Power supply	all
Density[m <sup>3</sup> /h]	1.205



## Label

Code	K352
Voltage[V]	400
Phases	3
Current[A]	
Poles	2
Weight[kg]	32
Frequency[Hz]	50
Speed[rpm]	2900
Power[kW]	3.0
IP	55
INS	

## Execution:

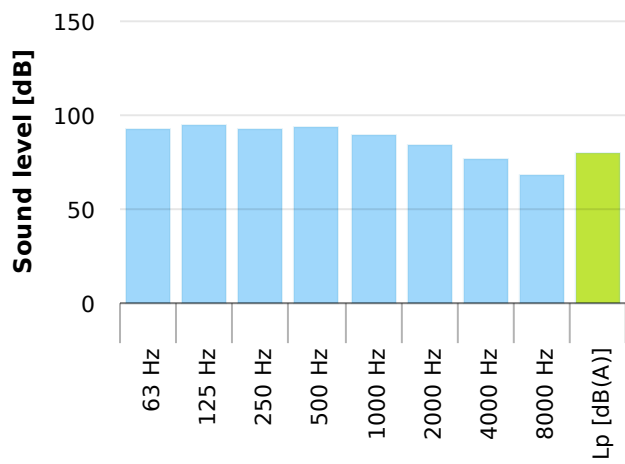
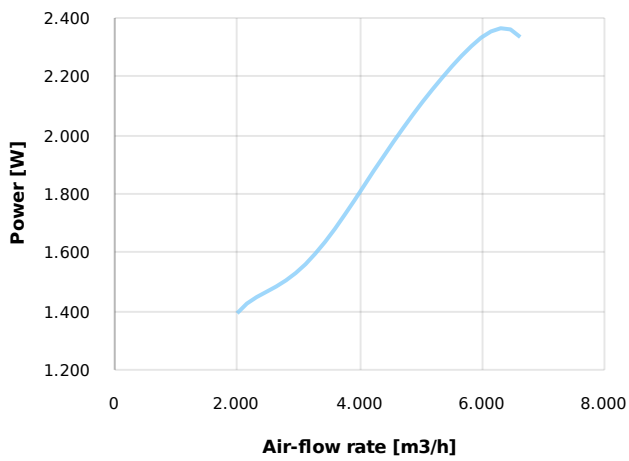
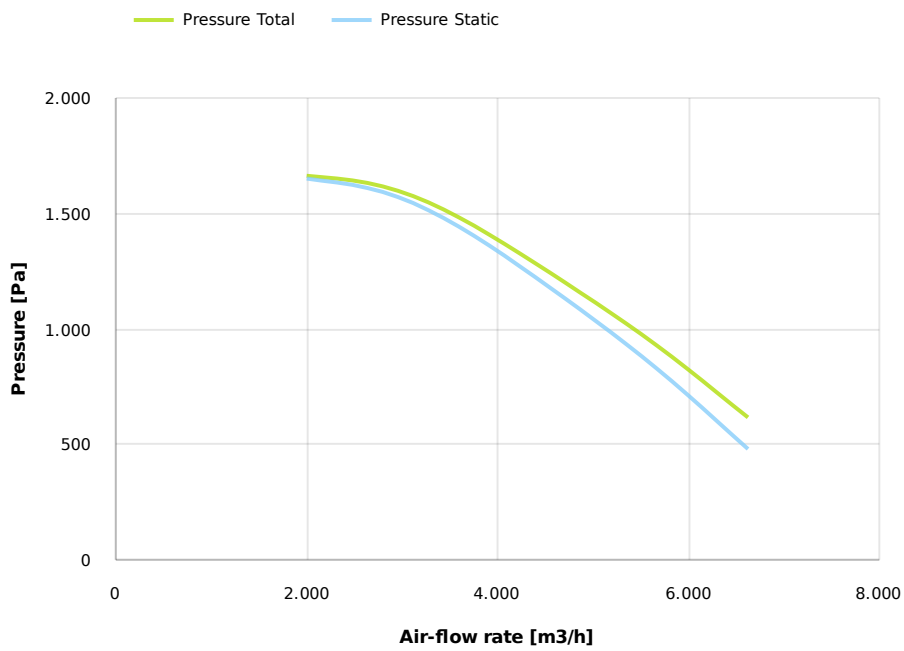
- Pe moulded housing
- PP impeller
- epoxy painted motor support
- stainless steel screw

## Table engines

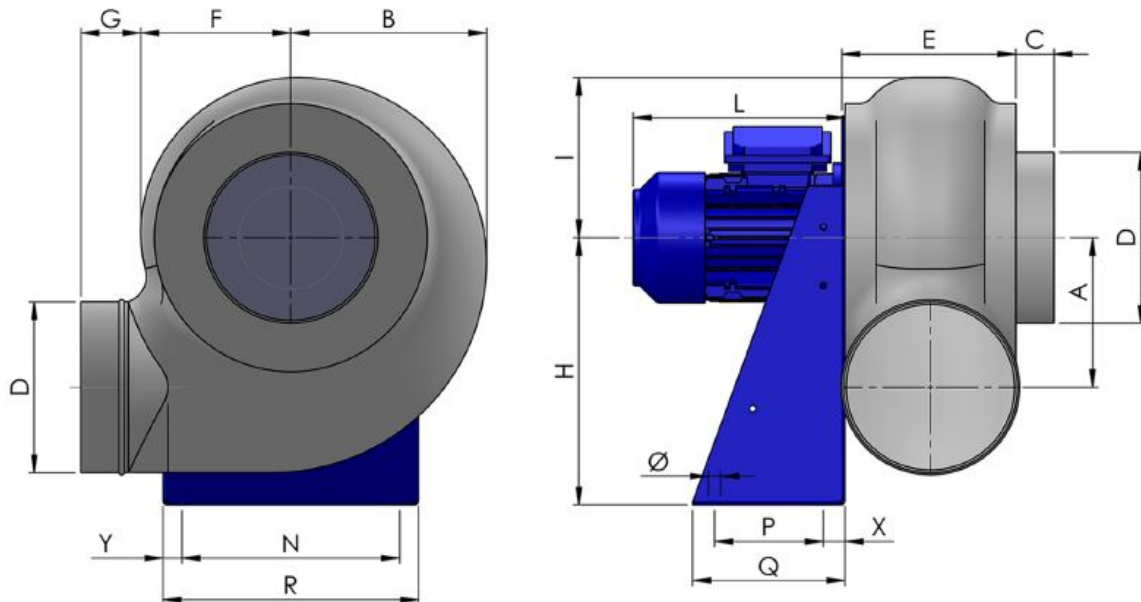
Class IE	IE3
Size	100L
Power[kW]	3.0
Current[A]	5.80
Voltage[V]	400
Cos	0.86
n	0.87

## Options:

- PP Housing
- INOX/Fe+ebonite impeller
- INOX motor support
- labyrinth seal
- flexible connection PVC
- exhaust cap with grid PP/PVC
- drain plug PP
- motor protection cover
- housing splinter protection PVC
- protection grid INOX
- vibration dampers
- deflector cowl PP/PVC
- gravity damper PP/PVC
- adjustable damper
- silencer PP/PVC



## Dimensions



A	B	C	D	E	F	G	H	I	L	N	Ø	P	Q
260	312	40	280	237	230	55	445	290	220	355	11	150	230
R				X				Y					
390				40				175					

## Configurations & cad

