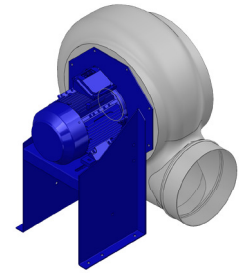


## Research Data

Air-flow rate[m <sup>3</sup> /h]	1204
Pressure[Pa]	265.1
Pressure type	Psta
Power supply	all
Density[m <sup>3</sup> /h]	1.205



## Label

Code	K314
Voltage[V]	400
Phases	3
Current[A]	
Poles	4
Weight[kg]	19
Frequency[Hz]	50
Speed[rpm]	1400
Power[kW]	0.25
IP	55
INS	

## Execution:

- Pe moulded housing
- PP impeller
- epoxy painted motor support
- stainless steel screw

## Table engines

Class IE	IE1
Size	71
Power[kW]	0.25
Current[A]	0.84
Voltage[V]	400
Cos $\phi$	0.72
n	0.6

