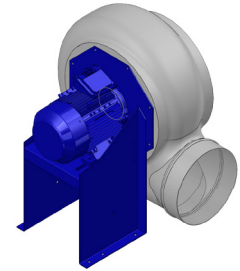


Research Data

Air-flow rate[m ³ /h]	2451
Pressure[Pa]	1098
Pressure type	Psta
Power supply	all
Density[m ³ /h]	1.205



Label

Code	K312
Voltage[V]	400
Phases	3
Current[A]	
Poles	2
Weight[kg]	26
Frequency[Hz]	50
Speed[rpm]	2850
Power[kW]	1.5
IP	55
INS	

Execution:

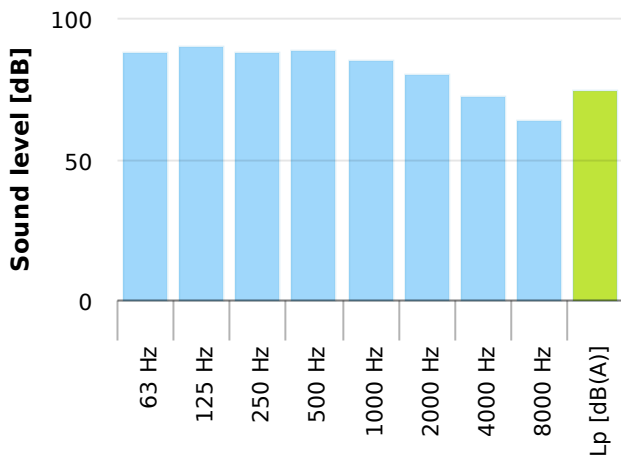
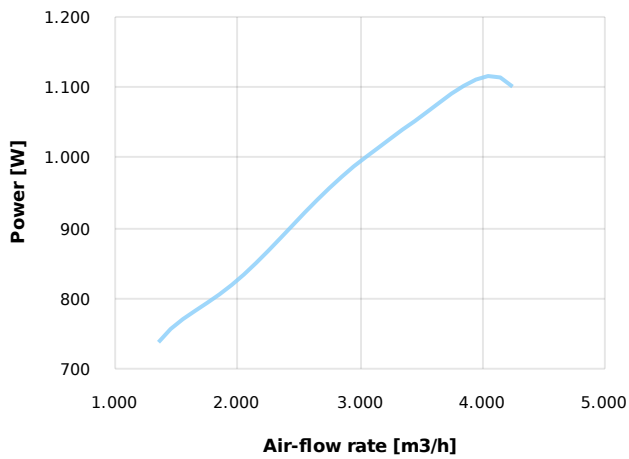
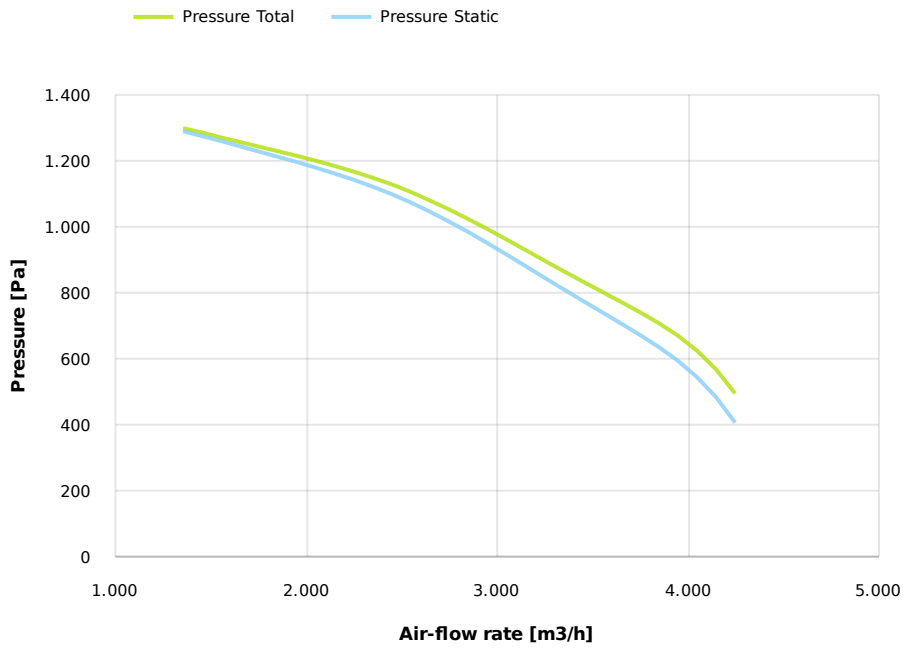
- Pe moulded housing
- PP impeller
- epoxy painted motor support
- stainless steel screw

Table engines

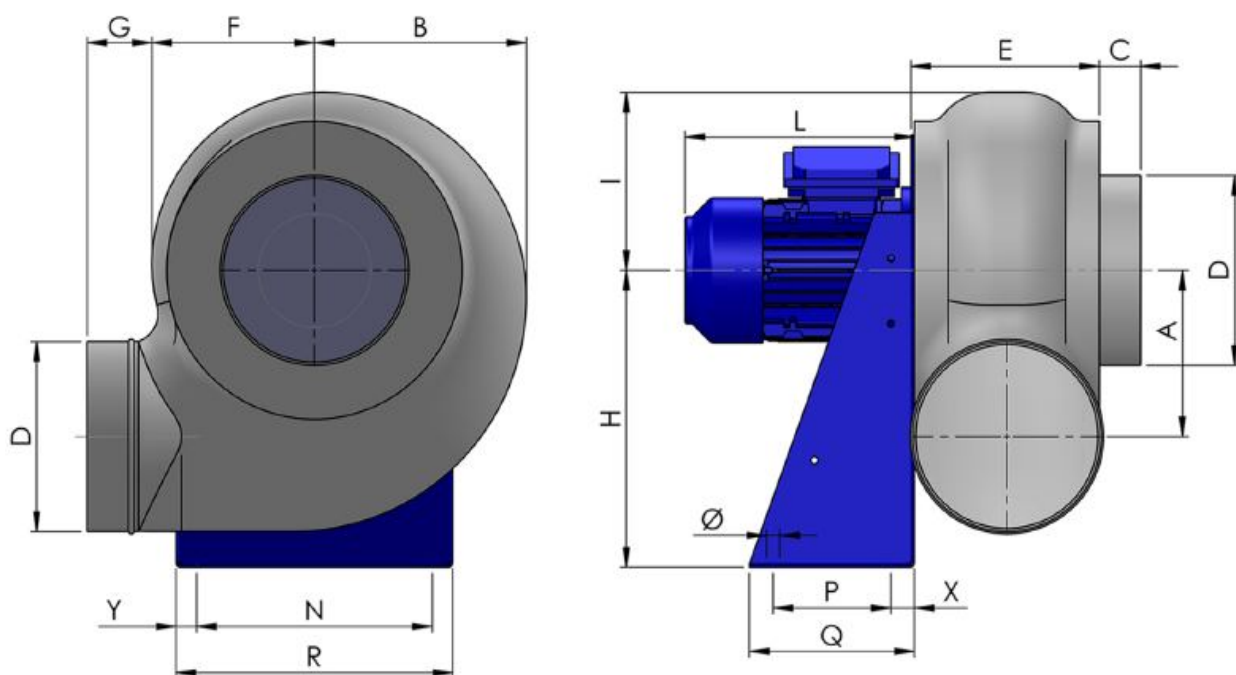
Class IE	IE1	IE2	IE3
Size	90S	90S	90S
Power[kW]	1.5	1.5	1.5
Current[A]	3.32	3.21	3.1
Voltage[V]	400	400	400
Cos ϕ	0.83	0.83	0.82
n	0.785	0.813	0.842

Options:

- PP Housing
- INOX/Fe+ebonite impeller
- INOX motor support
- labyrinth seal
- flexible connection PVC
- exhaust cap with grid PP/PVC
- drain plug PP
- motor protection cover
- housing splinter protection PVC
- protection grid INOX
- vibration dampers
- deflector cowl PP/PVC
- gravity damper PP/PVC
- adjustable damper
- silencer PP/PVC



Dimensions



A	B	C	D	E	F	G	H	I	L	N	Ø	P	Q
240	280	40	250	200	210	70	410	230	290	320	11	150	230
R				X				Y					
355				40				175					

Configurations & cad

