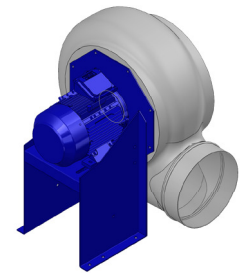


Research Data

Air-flow rate[m ³ /h]	1655
Pressure[Pa]	891
Pressure type	Psta
Power supply	all
Density[m ³ /h]	1.205



Execution:

- Pe moulded housing
- PP impeller
- epoxy painted motor support
- stainless steel screw

Label

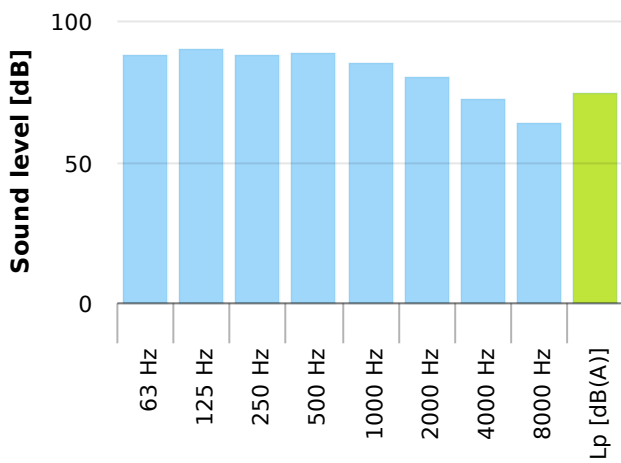
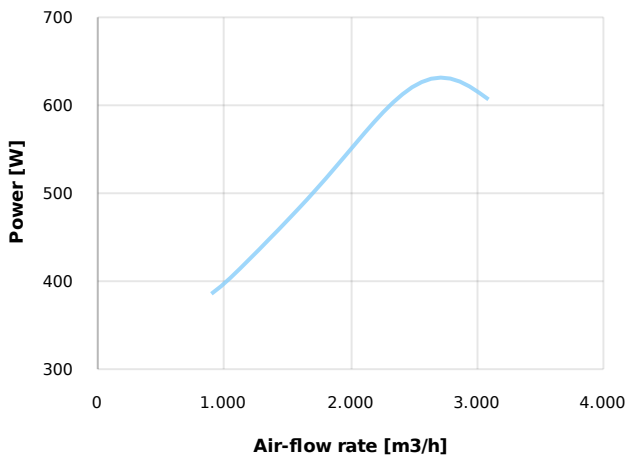
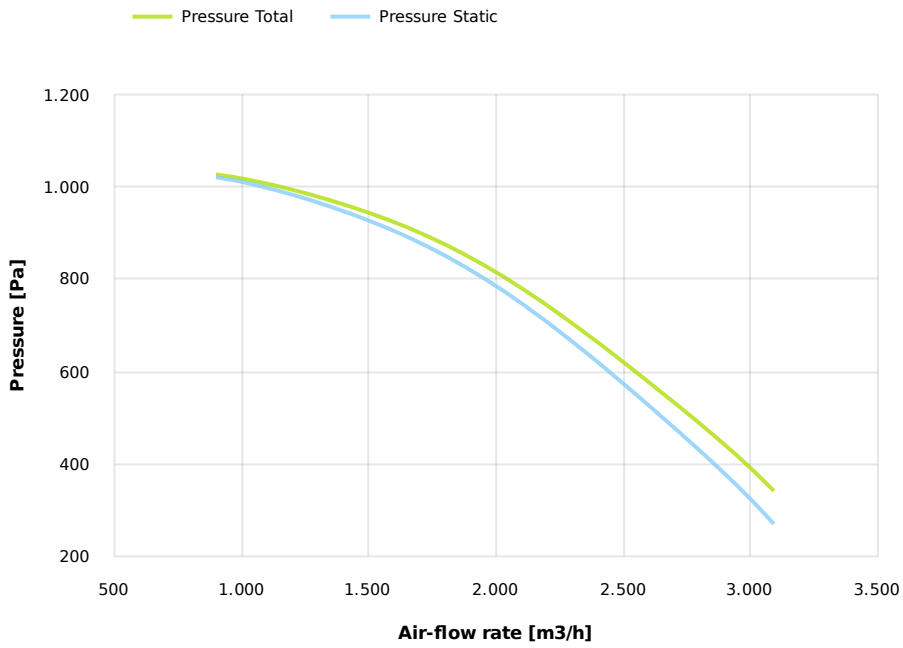
Code	K282
Voltage[V]	400
Phases	3
Current[A]	
Poles	2
Weight[kg]	19
Frequency[Hz]	50
Speed[rpm]	2850
Power[kW]	0.75
IP	55
INS	

Table engines

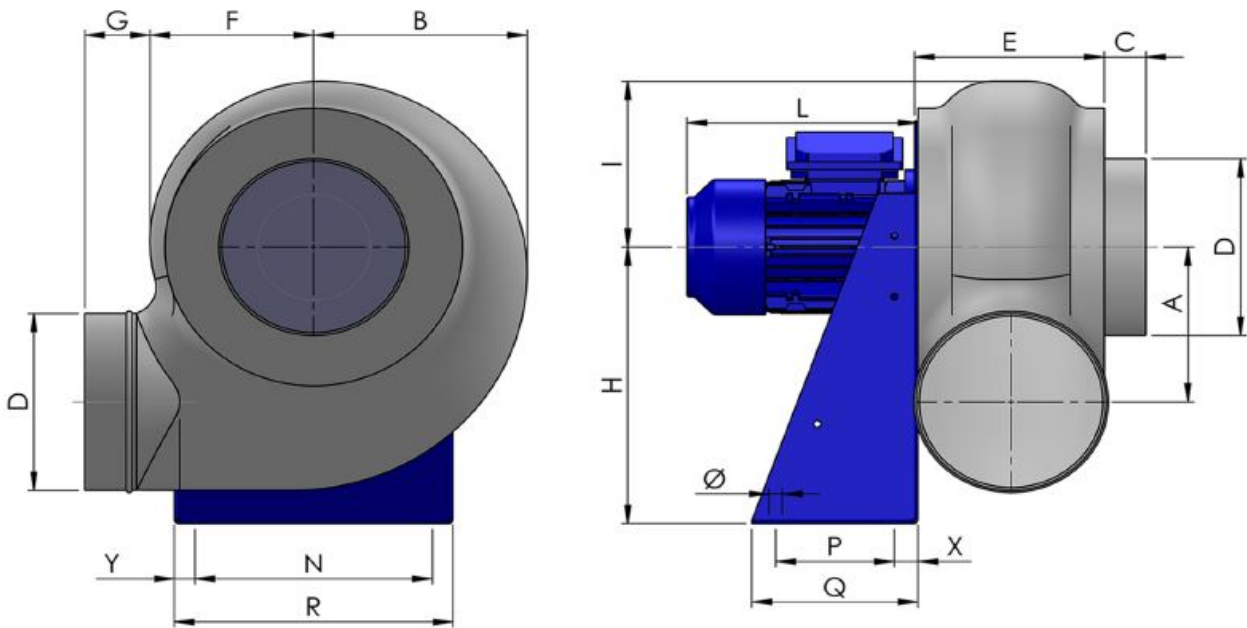
Class IE	IE1	IE2	IE3
Size	80	80	80
Power[kW]	0.75	0.75	0.75
Current[A]	1.83	1.73	1.7
Voltage[V]	400	400	400
Cos φ	0.82	0.81	0.81
n	0.72	0.774	0.807

Options:

- PP Housing
- INOX/Fe+ebonite impeller
- INOX motor support
- labyrinth seal
- flexible connection PVC
- exhaust cap with grid PP/PVC
- drain plug PP
- motor protection cover
- housing splinter protection PVC
- protection grid INOX
- vibration dampers
- deflector cowl PP/PVC
- gravity damper PP/PVC
- adjustable damper
- silencer PP/PVC



Dimensions



A	B	C	D	E	F	G	H	I	L	N	Ø	P	Q
208	255	40	225	195	190	70	350	210	240	280	11	120	190
R				X				Y					
316				35				18					

Configurations & cad

