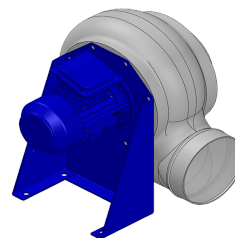


## Research Data

Air-flow rate[m <sup>3</sup> /h]	900
Pressure[Pa]	494.7
Tipo di pressione	Psta
Power supply	all
Density[m <sup>3</sup> /h]	1.205



## Label

Code	P222
Voltage[V]	400
Phases	3
Current[A]	
Poles	2
Weight[kg]	13
Frequency[Hz]	50
Speed[rpm]	2800
Power[kW]	0.25
IP	55
INS	

## Execution:

- Pe moulded housing
- PP impeller
- epoxy painted motor support
- stainless steel screw

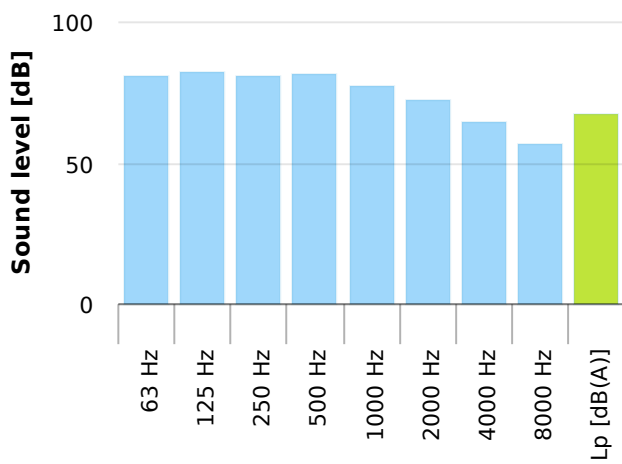
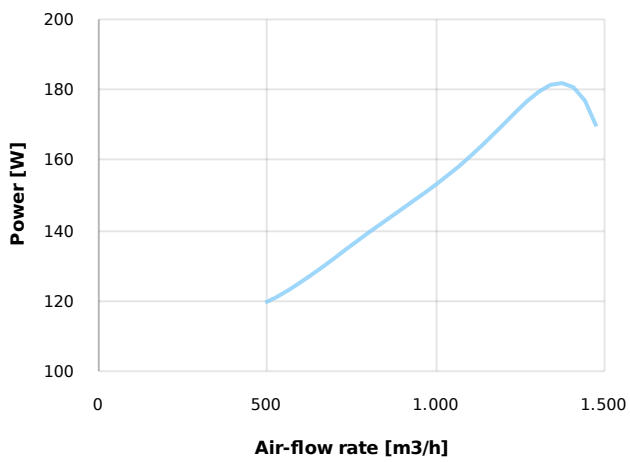
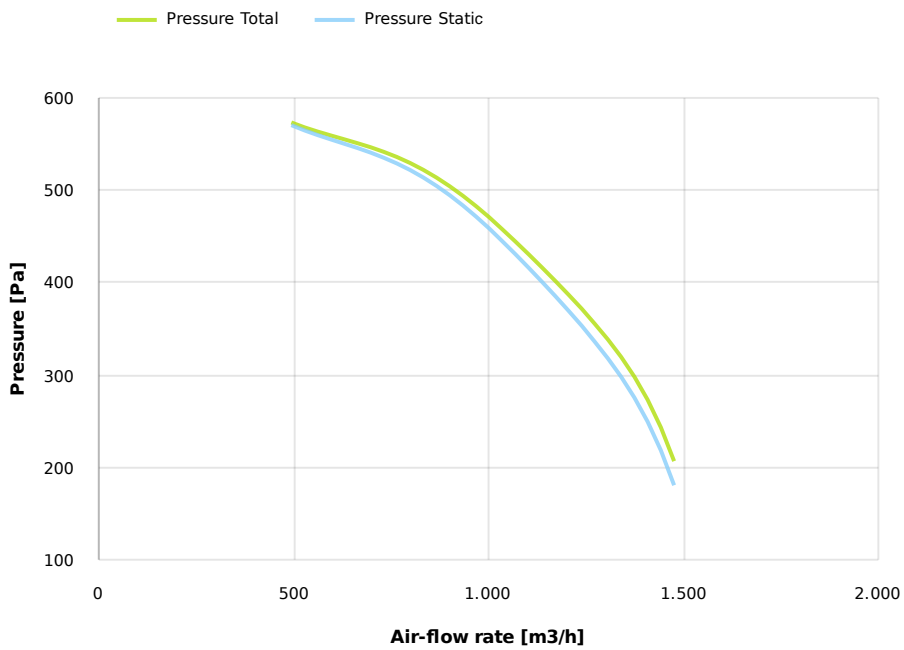
## Table engines

Class IE	IE1
Size	63
Power[kW]	0.25
Current[A]	0.71
Voltage[V]	400
Cos φ	0.78
n	0.65

## Options:

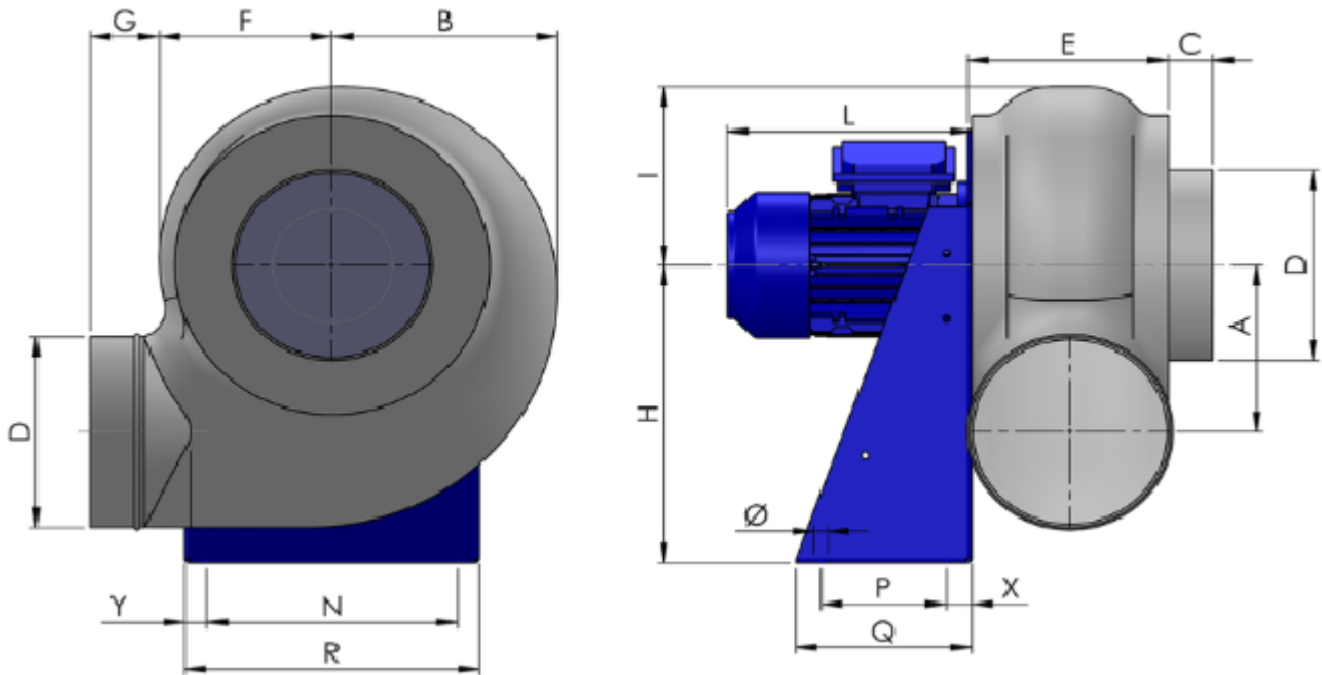
- |                                |                                   |                         |
|--------------------------------|-----------------------------------|-------------------------|
| - PP Housing                   | - drain plug PP                   | - gravity damper PP/PVC |
| - INOX/Fe+ebonite impeller     | - motor protection cover          | - adjustable damper     |
| - INOX motor support           | - housing splinter protection PVC | - silencer PP/PVC       |
| - labyrinth seal               | - protection grid INOX            |                         |
| - flexible connection PVC      | - vibration dampers               |                         |
| - exhaust cap with grid PP/PVC | - deflector cowl PP/PVC           |                         |

# K 222 M



# K 222 M

## Dimensions



A	B	C	D	E	F	G	H	I	L	N	Ø	P	Q	
173	228	35	200	185	170	55	310	190	210	225	11	100	140	
				R					X					
				290					20					
											Y			
											175			

## Configurations & cad

