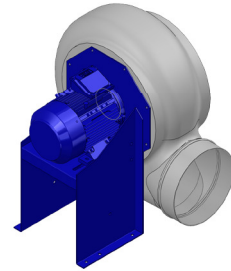


Research Data

| | |
|----------------------------------|-------|
| Air-flow rate[m ³ /h] | 297 |
| Pressure[Pa] | 89.17 |
| Pressure type | Psta |
| Power supply | all |
| Density[m ³ /h] | 1.205 |



Label

| | |
|---------------|------|
| Code | K204 |
| Voltage[V] | 400 |
| Phases | 3 |
| Current[A] | |
| Poles | 4 |
| Weight[kg] | 9 |
| Frequency[Hz] | 50 |
| Speed[rpm] | 1370 |
| Power[kW] | 0.12 |
| IP | 55 |
| INS | |

Execution:

- Pe moulded housing
- PP impeller
- epoxy painted motor support
- stainless steel screw

Table engines

| | |
|------------|------|
| Class IE | IE1 |
| Size | 63 |
| Power[kW] | 0.12 |
| Current[A] | 0.47 |
| Voltage[V] | 400 |
| Cos φ | 0.64 |
| n | 0.57 |

Options:

- PP Housing
- INOX/Fe+ebonite impeller
- INOX motor support
- labyrinth seal
- flexible connection PVC
- exhaust cap with grid PP/PVC
- drain plug PP
- motor protection cover
- housing splinter protection PVC
- protection grid INOX
- vibration dampers
- deflector cowl PP/PVC
- gravity damper PP/PVC
- adjustable damper
- silencer PP/PVC

