

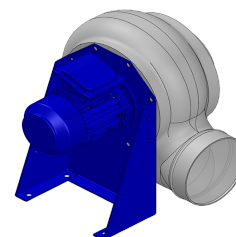
K 202 M

Research Data

Air-flow rate[m ³ /h]	596
Pressure[Pa]	359.3
Tipo di pressione	Psta
Power supply	all
Density[m ³ /h]	1.205

Label

Code	P202
Voltage[V]	400
Phases	3
Current[A]	
Poles	2
Weight[kg]	9
Frequency[Hz]	50
Speed[rpm]	2750
Power[kW]	0.18
IP	55
INS	



Execution:

- Pe moulded housing
- PP impeller
- epoxy painted motor support
- stainless steel screw

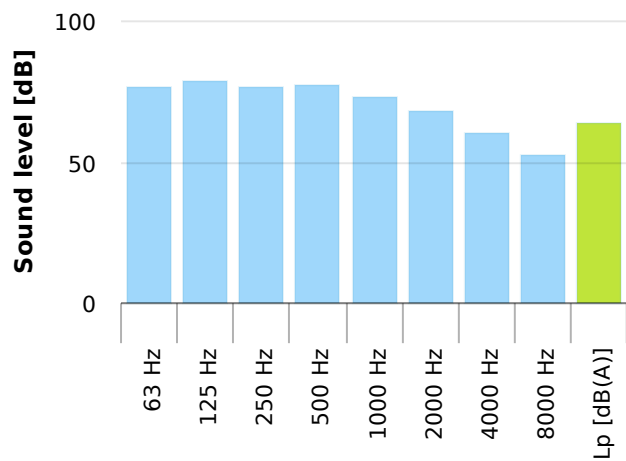
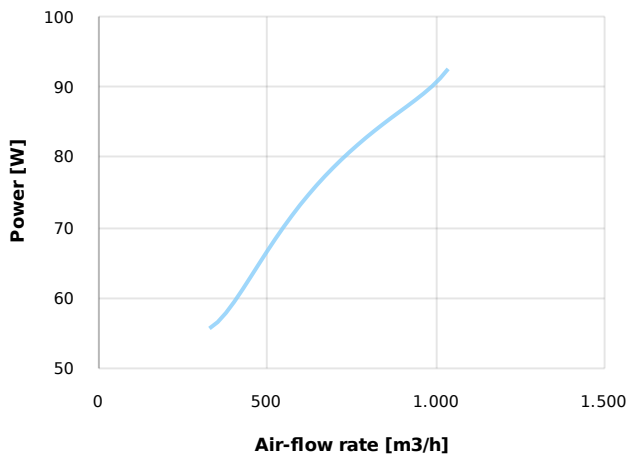
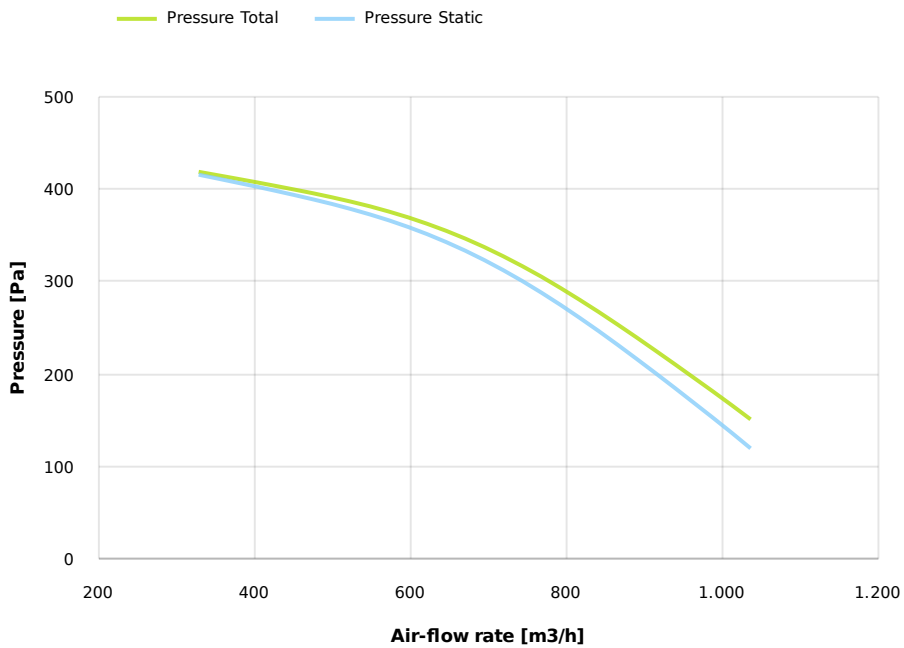
Table engines

Class IE	IE1
Size	63
Power[kW]	0.18
Current[A]	0.55
Voltage[V]	400
Cos φ	0.75
n	0.63

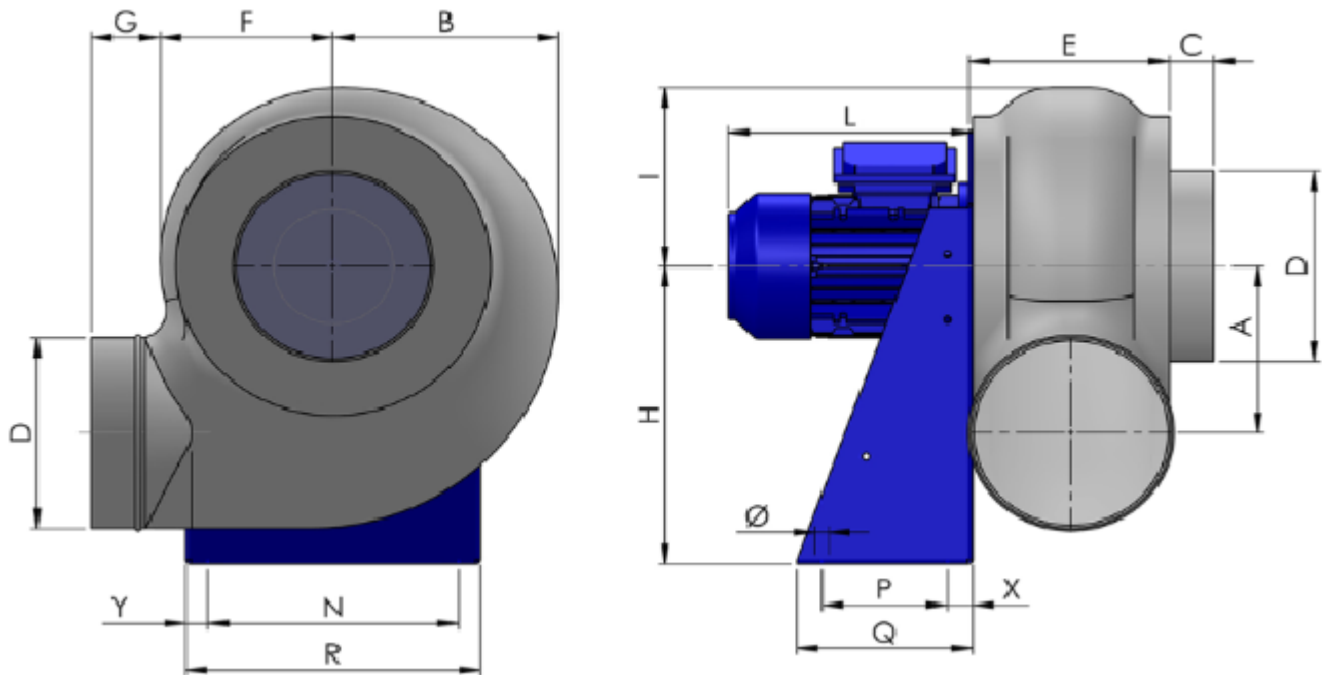
Options:

- PP Housing
- INOX/Fe+ebonite impeller
- INOX motor support
- labyrinth seal
- flexible connection PVC
- exhaust cap with grid PP/PVC
- drain plug PP
- motor protection cover
- housing splinter protection PVC
- protection grid INOX
- vibration dampers
- deflector cowl PP/PVC
- gravity damper PP/PVC
- adjustable damper
- silencer PP/PVC

K 202 M



Dimensions



A	B	C	D	E	F	G	H	I	L	N	Ø	P	Q	
140	180	35	160	160	138	55	250	150	195	200	11	100	140	
				R					X					
				235					20					
										Y				
										175				

Configurations & cad

